

KLIX

**RIGID LUXURY
VINYL FLOORING**



www.johnson-tiles.com

JOHNSON • TILES



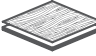






MADE IN THE UK SINCE 1901



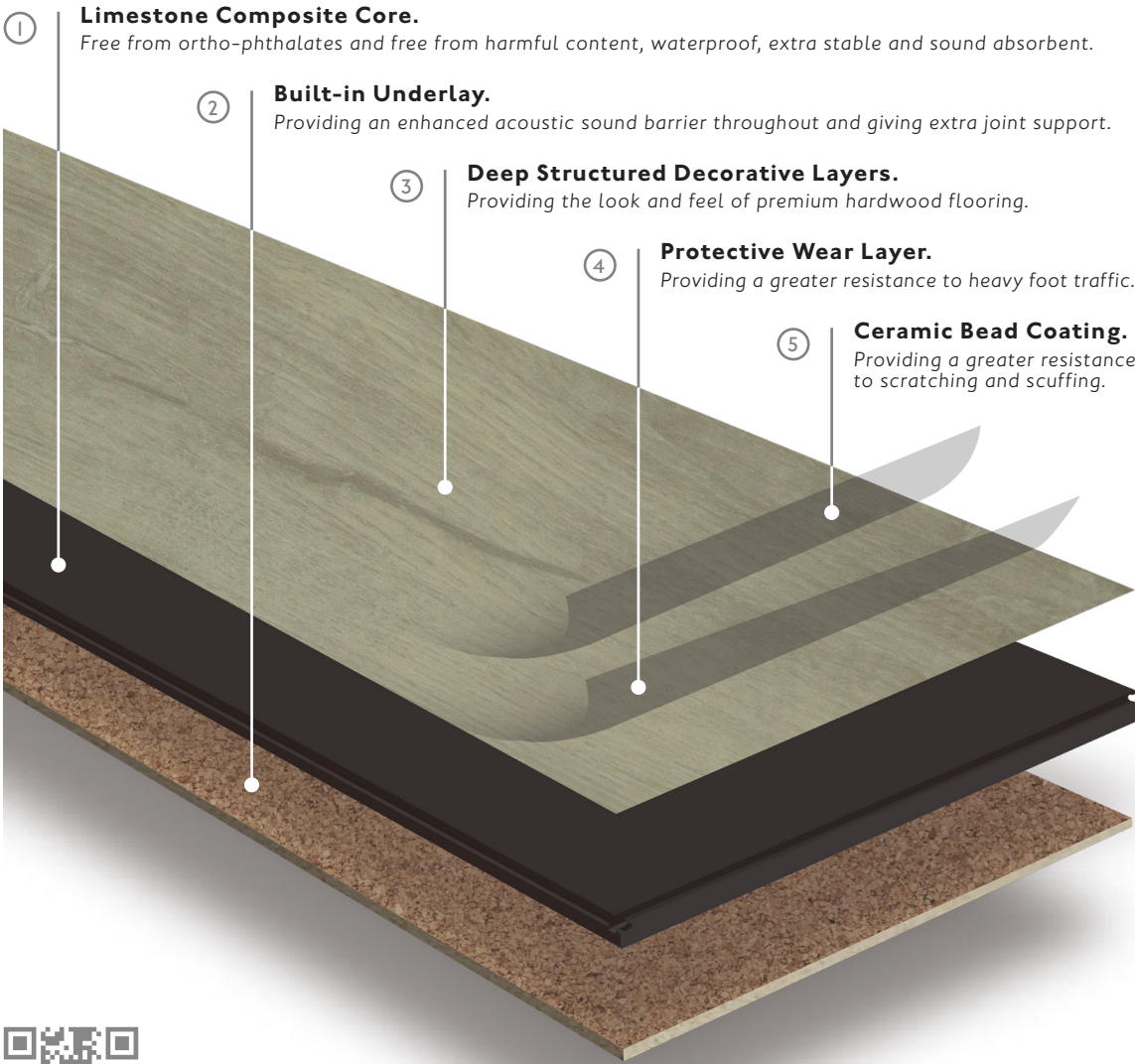
KLIX RIGID LUXURY VINYL FLOORING

Our collection of Rigid Luxury Vinyl Tiles offers a deep structured decorative layer to provide the authenticity of premium hardwood flooring without the extensive care regime. Klux can be cleaned using steam cleaners and wet mops for easy maintenance. Plus, this collection is fitted with an industry-leading Armor Coating, which provides technology made from a proprietary formula of active ingredients bringing extreme hardness along with superior scratch, wear, and stain resistance.

Suitable for various residential and commercial applications in areas up to 400m², this versatile range features 11 styles of luxurious wood effect products. Equipped with a built-in underlay, Klux provides enhanced acoustic qualities and extra joint support for easy installation. Our collection of RLVT products is 100% waterproof, 100% recyclable, and achieves a PTV 36+ slip resistance rating, with these extensive credentials Klux is the ideal flooring solution for a range of interior spaces.

SIMPLE & EASY INSTALLATION 	ARMOR COATING TECHNOLOGY 	BUILT-IN UNDERLAY 
ENHANCED ACOUSTICS 	SLIP RESISTANCE RATING PTV 36+ 	RECYCLABLE MATERIALS 100% 
ANTIBACTERIAL COATING 	RESIDENTIAL GUARANTEE 	COMMERCIAL GUARANTEE 

NEXT GENERATION ENGINEERED RIGID LUXURY VINYL FLOORING.

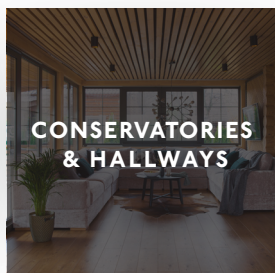
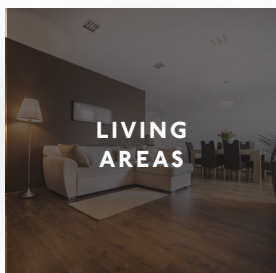
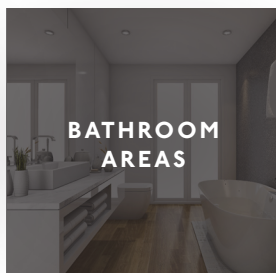
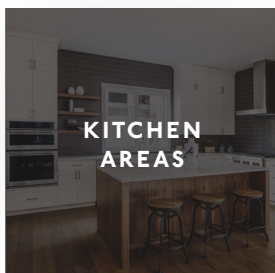


Scan the QR code for more information about our Klux RLVT products.

APPLICATION AREAS

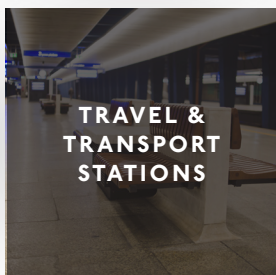
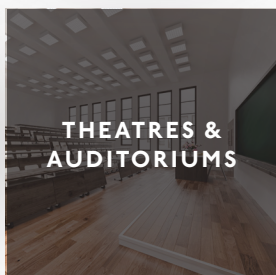
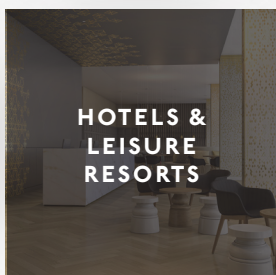
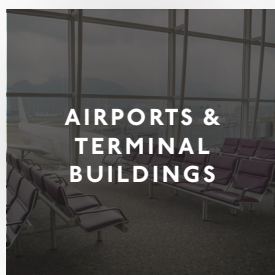
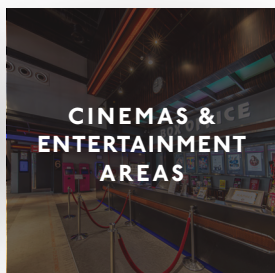
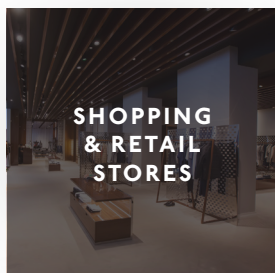
RESIDENTIAL SPACES

The installation of all Klix RLVLT is quick, easy and clean. Choose our affordable and durable products to effortlessly build and maintain comfortable refreshing kitchen areas, bathroom areas and living spaces. Draw on a wide variety of design concepts to create your own flooring combinations throughout any residential installation.



COMMERCIAL SPACES

With its waterproof Limestone Composite Core Technology, as well as an antibacterial coating and acoustic qualities, our collection of Rigid Luxury Vinyl Tiles can help create stylish working and living environments in a wide range of commercial settings, from sports centres to schools, hospitals to office spaces and more.



Note: For further application and suitability information or for any questions and queries relating to our Klix RLVLT products shown in this product brochure, please contact our technical advice helpline on +44 (0)1782 524 111, email: ddunlop@johnson-tiles.com or visit our website - www.johnson-tiles.com





Warm Oak 1235 x 225mm - LVT08A



Light Grey 615 x 123mm Herringbone - HLVT5A
Dark Grey 615 x 123mm Herringbone - HLVT6A



Warm Oak 1235 x 225mm - LVT08A



Silver Grey 1235 x 178mm - LVT02A



Natural Oak 615 x 123mm Herringbone - HLT4A



Warm Oak 1235 x 225mm - LVT08A



Burnt Oak 1235 x 225mm - LVT11A



Light Oak 1235 x 178mm - LVT01A



Silver Grey 1235 x 178mm - LVT02A



LIGHT OAK LRV: 39 PTV 4S: 36+

Product Code: LVT01A



SILVER GREY LRV: 29 PTV 4S: 36+

Product Code: LVT02A

PRODUCT INFORMATION	
Plank Size: 1235 x 178mm	Surface: U Embossed
Thickness: 4mm	Bevel: Cut

WEAR LAYER THICKNESS

0.3mm

RESIDENTIAL GUARANTEE

25 Years

COMMERCIAL GUARANTEE

5 Years

ORDER SAMPLE



WARM WALNUT LRV: 23 PTV 4S: 36+

Product Code: LVT03A (Plank) + HLT3A (Herringbone)



NATURAL OAK LRV: 41 PTV 4S: 36+

Product Code: LVT04A (Plank) + HLT4A (Herringbone)



LIGHT GREY LRV: 39 PTV 4S: 36+

Product Code: LVT05A (Plank) + HLT5A (Herringbone)



DARK GREY LRV: 24 PTV 4S: 36+

Product Code: LVT06A (Plank) + HLT6A (Herringbone)



ASH BLACK LRV: 11 PTV 4S: 36+

Product Code: LVT07A (Plank) + HLT7A (Herringbone)

PRODUCT INFORMATION		
Plank Size: 1235 x 178mm	Herringbone Size: 615 x 123mm	
Thickness: 5mm	Surface: U Embossed	Bevel: Painted

WEAR LAYER THICKNESS

0.55mm

RESIDENTIAL GUARANTEE

Life Time

COMMERCIAL GUARANTEE

15 Years

ORDER SAMPLE



KLiX RIGID LUXURY VINYL FLOORING

PLANKS: 1235 x 178mm
HERRINGBONE: 615 x 123mm

Natural Oak 1235x178mm - LVT04A
Light Grey 615 x 123mm Herringbone - HLVT5A
Dark Grey 615 x 123mm Herringbone - HLVT6A



Natural Oak 1235 x 178mm - LVT04A



Burnt Oak 1235 x 225mm - LVT11A



Washed Oak 1235 x 225mm - LVT10A



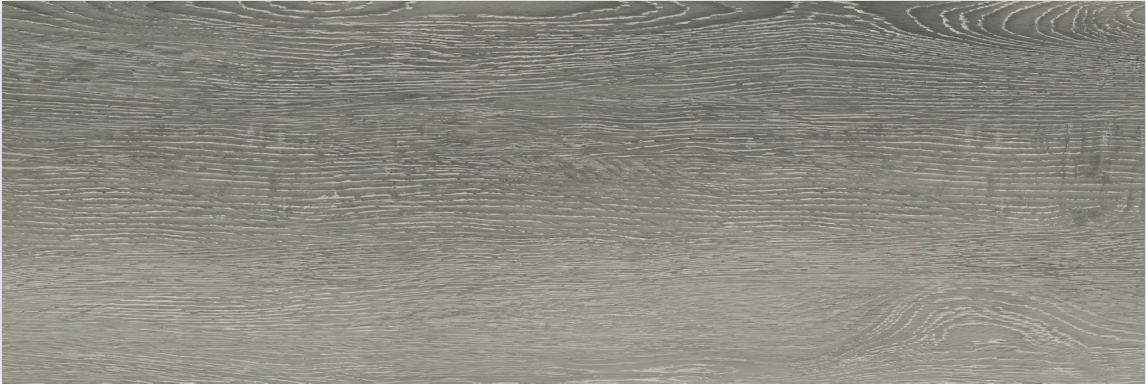
WARM OAK LRV: 13 PTV 4S: 36+

Product Code: LVT08A



MID OAK LRV: 23 PTV 4S: 36+

Product Code: LVT09A



WASHED OAK LRV: 45 PTV 4S: 36+

Product Code: LVT10A



BURNT OAK LRV: 13 PTV 4S: 36+

Product Code: LVT11A

PRODUCT INFORMATION	
Plank Size: 1235 x 225mm	Surface: EIR
Thickness: 6.5mm	Bevel: Painted

WEAR LAYER THICKNESS

0.7mm

RESIDENTIAL GUARANTEE

Life Time

COMMERCIAL GUARANTEE

15 Years



TECHNICAL & IMPORTANT INFORMATION

Specification

Product Type	Thickness	Surface Type	Bevel Type	Installation Type
Planks (SPC - Rigid LVT)	4mm	U Embossed	Cut Bevel on 4 Sides	Floating (Angle-Tap Down)
Planks (SPC - Rigid LVT)	5mm	U Embossed	Painted Bevel on 4 Sides	Floating (Angle-Tap Down)
Herringbone (SPC - Rigid LVT)	5mm	U Embossed	Painted Bevel on 4 Sides	Floating (Angle-Tap Down)
Planks (SPC - Rigid LVT)	6.5mm	EIR	Painted Bevel on 4 Sides	Floating (Angle-Tap Down)

Layer Type	Layer Thickness (4mm)	Layer Thickness (5mm)	Layer Thickness (6.5mm)
Top Layer (Wear Layer)	0.30mm	0.55mm	0.70mm
Composite Core	2.70mm	3.45mm	4.80mm
Backing (Cork)	1.00mm	1.00mm	1.00mm

Note: Top Layer Material Type: Wear Layer with a Slip Resistant, Anti-microbial Ceramic Bead Enhanced UV Finish.
Composite Core Material Type: Waterproof Thermoplastic Composite. Backing Material Type: Cork Underlay. Class of Use: ISO 10582.

Class of Use & Warranty

Thickness	Class of Use	Domestic	Domestic Warranty	Commercial	Commercial Warranty
4mm	Class 3 I	23 Heavy	25 Years Limited	3 I Moderate	5 Years Limited
5mm	Class 3 I	23 Heavy	Lifetime Limited	3 I Moderate	15 Years Limited
6.5mm	Class 34	23 Heavy	Lifetime Limited	3 I Moderate	15 Years Limited

Certifications

CE Mark	UKCA Mark	IAC Gold	GreenGuard Gold	Product Health Declaration	Assure
Certified	Certified	Certified	Certified	Platinum Level	Certified

Chemical Properties

Norm	Item	Test Method	Requirement	Result
EN 14014 I	Emissions	EN 717-1	≤ 0.124mg/m³	Compliant
Decret No.2011-32 I	Emissions	ISO 16000	VOC A+ (TVOC<1000µg/m³	Compliant
CDPH	Emissions	Spectrometry, Chromatography	TVOC ≤ 220µg/m³	Compliant
CPSIA & Prop 65	Ortho-Phthalates	CPSC-CH-C-1001-09.4	N.D.	Compliant
REACH	SVHC	Spectrometry, Chromatography	≤ 0.1 %	Compliant

Physical Properties

ISO 10582	Test Method	Requirement	Result
Dimensional Stability (6hrs at 80°C)	ISO 23999	Length/Width: ≤ 0.15% Curling: ≤ 0.1 mm	Compliant
Length	ISO 24342	≤ 0.15 % of Nominal Length up to 0.5mm Max.	Compliant
Width	ISO 24342	≤ 0.10% of Nominal Length up to 0.5mm Max.	Compliant
Total Thickness (With Backing)	ISO 24346	+ 0.13mm/- 0.10mm	Compliant
Squareness	ISO 24342	≤ 0.25mm/≤ 400mm ≤ 0.35mm/≥ 400mm	Compliant
Flatness	ISO 10582 Appendix B	Length: ≤ 0.50% (Concave) Length: ≤ 1.0% (Convex) Width: ≤ 0.10% (Concave) Width: ≤ 0.15% (Convex)	Compliant
Openings	ISO 10582 Appendix C	Average: ≤ 0.15mm/Max: ≤ 0.2mm	Compliant
Height Difference	ISO 10582 Appendix C	Average: ≤ 0.1mm/Max: ≤ 0.15mm	Compliant
Residual Indentation	ISO 24343-1	≤ 0.1 mm	Compliant
Castor Chair	ISO 4918	4mm: N/A 5mm: Moderate Commercial 15,000R 6.5mm: Heavy Commercial 25,000R	Compliant
Light Fatness (Blue Wool)	ISO 105-B02:2014 Method 3A	≥ Grade 6	Compliant
Locking Strength	ISO 10582 Appendix D	≥ 1.5KN/m	Compliant

EN 16511	Test Method	Requirement	Result
Wear Resistance	EN 13329	4mm: ≥ 2000 cycles (AC3) 5mm & 6.5mm: ≥ 4000 cycles (AC4)	Compliant
Impact Resistance	EN 13329 Annex A	≥ 1600mm	Compliant
Martindale (Gloss Retention)	EN 16094	≤ MSR-A2	Compliant
Martindale (Micro-Scratch)	EN 16094	≤ MSR-B2	Compliant
Furniture Leg	EN 424	No Visible Damage	Compliant
Resistance To Staining	EN 438-2	Group 1 & 2: Grade 5 Group 3: Grade 4	Compliant
Swelling	ISO 24336	≤ 12%	Compliant

TECHNICAL & IMPORTANT INFORMATION

EN 14041	Test Method	Requirement	Result
Thermal Resistance (R)	EN 12667/ASTM C518	N/A	Compliant
Slipperiness	EN 13893	≥ 0.3	Compliant
Reaction To Fire	EN 13501-1	Class Bfl-S1	Compliant
Other	Test Method	Requirement	Result
Slip Resistance	Pendulum Test Value (4S)	Dry 36+ Wet 36+	Compliant
	DIN 51130	≥ R9	Compliant
Airborne Sound Transmission	ISO 10140-2	N/A	67dB
Impact Sound Transmission	ISO 10140-3	N/A	4mm: 46dB
			5mm: 42dB
			6.5mm: 44dB
Impact Sound Transmission (Reduction)	ISO 10140-1	N/A	4mm: 19dB
			5mm: 18dB
			6.5mm: 19dB
Resistance To Staining	EN 423	Not Affected	Compliant



Warm Walnut 615 x 123mm Herringbone - HLVT3A

INSTALLATION GUIDE: PLANK

Thank you for choosing our Klix - Rigid Luxury Vinyl Tile flooring. When properly installed and cared for, your new flooring will be easy to maintain and will keep its great looks for years. Please read all instructions before you begin the installation. Improper installation will void your warranty.

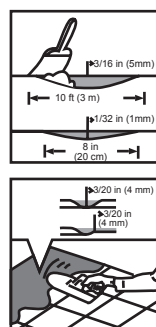
GENERAL PREPARATIONS

Tools Required: Spacers, Rubber Mallet, Pencil, Ruler, Tape Measure and Utility Knife.

- Prior to installation, inspect material in daylight for visible faults/damage, including defects or discrepancies in colour or shine; check the edges of the flooring for straightness and any damage. No claims on surface defects will be accepted after installation.
- It is preferable to lay boards perpendicular to the window, following the direction of the main source of light. For the best result, make sure to always work from 3 to 4 cartons at a time, mixing the planks during the installation.
- Check if sub-floor/site conditions comply with the specifications described in these instructions. If you are not satisfied, do not install, and contact your supplier.
- Flooring products can be damaged by rough handling before installation. Exercise care when handling and transporting these products. Store, transport and handle the flooring planks in a manner to prevent any damage. Store cartons flat, never on the edge.
- Flooring products can be heavy and bulky. Always use proper lifting techniques when handling these products. Whenever possible, make use of material-handling equipment such as dollies or material carts. Never lift more than you can safely handle; get assistance if needed.
- Calculate the room surface prior to installation and plan an extra 5-10% of flooring for cutting waste.
- The environment where the flooring is to be installed is critically important with regard to successful installation and continued performance of the flooring products. The flooring is intended to be installed in interior locations only. These interior locations must meet climactic and structural requirements as well.
- In most cases, this product does not need to be acclimated. However, if the boxes of flooring were exposed over 2 hours to extreme temperatures under 50°F/10°C or over 104°F/40°C within the 12 hours before the installation, acclimation is required. In this case, keep the boards in room temperature for at least 12 hours in unopened package before you start the installation. The room temperature must be consistently maintained between 70-80°F/20-25°C before and during the installation.
- Flooring should only be installed in temperature-controlled environments. It is necessary to maintain a constant temperature of 70-80°F/20-25°C before and during the installation. Portable heaters are not recommended as they may not heat the room and sub-floor sufficiently. Kerosene heaters should never be used.
- After installation, make sure that the flooring is not exposed to temperatures less than 50°F/10°C or greater than 120°F/50°C.
- For floor surfaces exceeding 4356 sq. ft./400 m² and/or lengths exceeding 66 lineal ft./20lm, use expansion mouldings/joints.
- This product is designed to be resistant to wear, however no product is guaranteed against scratches or loss of gloss. Please be sure to follow our maintenance instructions to ensure that your floor remains new as long as possible.
- A combination of heat and sunlight can cause most home furnishings to fade and discolour. Avoid exposure to direct sunlight for prolonged periods. During peak sunlight hours, the use of blinds or drapes is recommended.

SUB-FLOOR INFORMATION

- Inspect your sub-floor before you begin, it must be structurally sound, clean, dry, flat and smooth. High-spots and bumps must be levelled. Deflections more than $\frac{3}{16}$ "/5mm within a 10ft./3m radius must be levelled out with an appropriate levelling compound, the same applies to unevenness of more than $\frac{1}{32}$ "/1mm within 8"/20cm.
- Ceramic tile floors, ceramic and marble grout joints, and irregularities in concrete should be filled and levelled.
- Depressions, deep grooves, expansion mouldings/joints and other sub-floor imperfections that exceed 4mm wide and 4mm depth must be filled with patching or levelling compound.
- Substrates must be free from excessive moisture or alkali. Remove dirt, paint, varnish, wax, oils, solvents, any foreign matter and contaminants.
- Do not use products containing petroleum, solvents or citrus oils to prepare substrates as they can cause staining and expansion of the new flooring.
- Although this flooring product is water-proof, it is not aimed to be used as a moisture barrier. The concrete moisture vapour emissions should not exceed 8lb/3.63kg (ASTM F1869)/90% RH (ASTM F2170) with a PH limit of 9/max. 2.5% moisture content (CM method).
- This flooring product is also not to be installed in areas that have a risk of flooding such as saunas or outdoor areas.
- Existing sheet vinyl floors should not be heavily cushioned and not exceed more than one layer of thickness. Soft underlayment and soft substrates will diminish the product's inherent strength in resisting indentations.



WOOD SUB-FLOORS

- If this flooring product is intended to be installed over an existing wooden floor, it is recommended to repair any loose boards or squeaks before you begin the installation.
- Nail or screw every 6"/15cm along joists to avoid squeaking.
- Basements and crawl spaces must be dry. Use of a 6mil/0.15mm poly-film is required to cover 100% of the crawl space earth.
- We recommend laying the flooring crossways to the existing floorboards.
- All other sub-floors - plywood, OSB, particleboard, chipboard, wafer board, etc. must be structurally sound and must be installed following their manufacturer's recommendations.

CONCRETE SUB-FLOORS

- Existing concrete sub-floors must be fully cured, at least 60 days old, smooth, permanently dry, clean, and free of all foreign material such as dust, wax, solvents, paint, grease, oils, and old adhesive residue. Curing agents and hardeners could cause bonding failure and should not be used.
- We recommend using a minimum 6mil/0.15mm poly-film as a moisture barrier between the concrete sub-floor and the flooring.

DO NOT INSTALL OVER

- Any type of carpet. Existing cushion-backed vinyl flooring. Floating floor of any type, loose lay, and perimeter fastened sheet vinyl. Hardwood flooring/wood sub-floors that lay directly on concrete or over dimensional lumber or plywood used over concrete.

IMPORTANT NOTICE

In-floor Radiant Heat: Flooring can be installed over $\frac{1}{2}$ "/12mm embedded radiant heat using the floating method. Maximum operating temperature should never exceed 85°F/30°C. Use of an in-floor temperature sensor is recommended to avoid overheating.

- Turn the heat off for 24 hours before, during and 24 hours after installation when installing over radiant heated sub-floors.
- Before installing over newly constructed radiant heat systems, operate the system at maximum capacity to force any residual moisture from the cementitious topping of the radiant heat system.
- Make sure that the temperature in the room is maintained consistently between 70-80°F/20-25°C before and during the installation.
- Floor temperature must not exceed 85°F/30°C.
- Once the installation has been completed, the heating system should be turned on and increased gradually (5-degree increments) until returning to normal operating conditions.
- Refer to the radiant heat system's manufacturer recommendations for additional guidance.

Warning: Electric heating mats that are not embedded into the sub-floor are not recommended for use underneath the floors. Using electric heating mats that are not embedded and applied directly underneath the floors could void the warranty for your floor in case of failure. It is best to install the flooring over embedded radiant floor heating systems and adhere to the guidelines listed above.

INSTALLATION

- Remove baseboard, quarter-round moldings, wall-based appliances and furniture from room. For best results, door trim should be under-cut to allow flooring to move freely without being pinched. After preparation work, sweep and vacuum the entire work area to remove all dust and debris.
- With a floating floor, you must always ensure you leave a $\frac{1}{4}$ "/6mm gap between walls and fixtures such as pillars, stairs, etc. These gaps will be covered with trim moldings after the floor is installed.
- Whenever possible, plan the layout so that the joints in the planks do not fall on top of joints or seams in the existing substrate. The end joints of the planks should be staggered a minimum of 8"/20cm apart. Do not install over expansion joints. Avoid installing pieces shorter than 12"/30cm at beginning or end of rows.
- Do not install your kitchen cabinets directly over your floor. The floor's quality can be guaranteed as long as the floor can move freely.
- Decide the installation direction. It is recommended to install the boards perpendicular to the window following the direction of the main source of light.
- Measure the area to be installed: The board width of the last row shall not be less than 2"/50mm. If so, adjust the width of the first row to be installed. In narrow hallways, it is recommended to install the floor parallel to the length of the hall.
- **Underlay:** This product has a pre-attached underlayment, the use of an additional underlayment could damage the locking mechanism and will void warranty.

1 - First Row, First Plank: After thoroughly cleaning the sub-floor, you should begin laying from left to right. Position the first plank so that the grooved edge is facing you. Place the floorboard $\frac{1}{4}$ "/6mm from the left wall. Use spacers between the wall and the floorboard.

2 - First Row, Second Plank: Drop the plank and gently tap down the end with a rubber mallet so it firmly locks into the previous plank until both are at the same height. Make sure both planks are perfectly aligned. It is crucial that after the short edges of two connecting planks are correctly aligned, the rubber mallet contacts the plank in the area directly above the short edge, allowing for a correct locking.

Note: Tapping the area close to the short edge, but not directly above it, may result in permanent damage to the joint. Continue installing the first row until you reach the wall on the right.

Important: If you notice both planks aren't at the same height or are not well locked together, please follow the disassembling instructions at the bottom of the page, disassemble and check if any debris stuck inside the lock is obstructing. Failure to properly line up the end joint and attempting to force it in while out of alignment could result in permanent damage to the end joint.

3 - First Row, Last Plank: At the end of the first row, leave an expansion gap of $\frac{1}{4}$ "/6mm to the wall and measure the length of the last plank to fit.

4 - To Cut The Plank: Use a simple utility knife and ruler, and with the top side facing up, cut heavily and several times on the same axis. The knife will not go through the surface but make a deep cut. You can then lift one half of the plank using your other hand to hold down the second placing it very close to the cut. The plank will split naturally.

5 - Second Row, First Plank: Start the second row with the leftover cut part of the last plank of the previous row. This small plank should measure at least 12"/30cm. Otherwise, cut a new plank in half and use it to begin the second row. The end joints of each adjoining row should not be closer than 8"/20cm to each other. Whenever practical, use the piece cut from the preceding row to start the next row.

6 - Second Row, Second Plank: Click the long side of the plank into the previous row and place it tight to the short end of the previous plank with an angle of 25-30 degrees. Drop the plank and gently tap on the end with a rubber mallet so it firmly locks into the previous plank until both are at the same height. Make sure both planks are perfectly aligned.

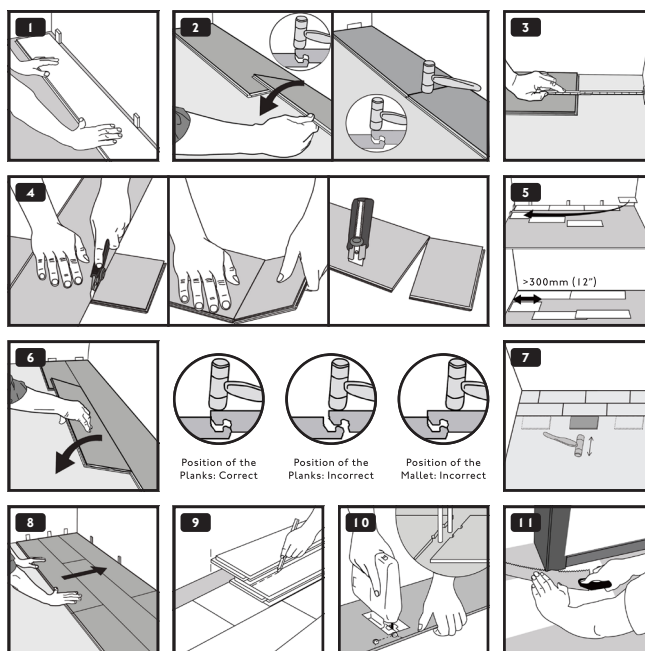
7 - After Finishing The Installation Of Every Row: Use scrap pieces and a small hammer or rubber mallet to gently tap the planks into the click of the previous row to make sure they are tightly clicked together and make sure there is no gap between the long side of the planks installed. Any gapping can compromise the whole installation.

8 - Installation Tip: After the first 2-3 rows of planks are installed, they should be checked with a string line to ensure that rows are still running straight. If they are not, it could be that the starting wall has some irregularities that caused bowing in the installation. If so, the starting row of planks may have to be scribed and re-trimmed to account for any unevenness in the wall. This can be done without having to disassemble the beginning rows.

9 - To Lay The Last Row: Position a loose board exactly on top of the last row laid. Place another board on top, with the tongue side touching the wall. Draw a line along the edge of this boards, to mark the first board. Cut along this board to mark the first board. Cut along this line to obtain the required width. Insert this cut board against the wall. The last row should be at least 2"/50mm wide. The spacers can then be removed.

10 - Holes For Pipes: Measure the diameter of the pipe and drill a hole that is $\frac{1}{8}$ "/12mm larger. Saw off a piece as shown in the figure and lay the board in place on the floor. Then lay the sawed-off piece in place.

11 - Door Moulding & Skirting: Lay a board (with the decorative side down) next to the door molding and saw as shown in the figure. Then slide the floorboard under moulding.



FINISHING THE INSTALLATION

- Replace moulding or wall base, allowing slight clearance between the moulding and the planks. Nail the moulding to the wall surface, not through the flooring. At doorways and at other areas where the flooring planks may meet other flooring surfaces, it is preferable to use a "T" moulding, or similar, to cover the exposed edge but not pinch the planks. Leave a small gap between the planks and the adjoining surface.

MAINTENANCE

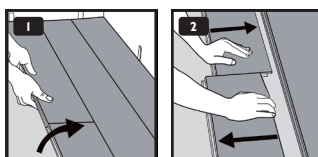
- Sweep or vacuum daily using soft bristle attachments.
- Clean up spills and excessive liquids immediately.
- Damp mop as needed and use cleaners recommended for vinyl flooring.
- The use of residential steam mops on this product is allowed. Use at lowest power with a suitable soft pad, and do not hold a steam mop on one spot for an extended period of time (longer than 5 minutes). Refer to the steam mop's manufacturer instructions for proper usage.
- Use proper floor protection devices such as felt protectors under furniture.
- Place a walk-off mat at outside entrances to reduce the amount of dirt brought into your home. Do not use mats with a latex or rubber backing since these backings can cause permanent discolouration.
- Do not use abrasive cleaners, bleach or wax to maintain the floor.
- Do not drag or slide heavy objects across the floor.

DISASSEMBLING

1 - Separating The Rows: Separate the whole row by lifting it up delicately at an angle.

2 - Separating The Planks: To separate the planks, leave them flat on the ground and slide them apart.

Note: If the planks do not separate easily, you can lift the planks slightly, not exceeding more than 5°, when sliding them apart.



INSTALLATION GUIDE: HERRINGBONE

Thank you for choosing our Klix - Rigid Luxury Vinyl Tile flooring. When properly installed and cared for, your new flooring will be easy to maintain and will keep its great looks for years. Please read all instructions before you begin the installation. Improper installation will void your warranty.

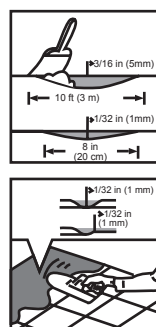
GENERAL PREPARATIONS

Tools Required: Spacers, Rubber Mallet, Pencil, Ruler, Tape Measure and Utility Knife.

- Prior to installation, inspect material in daylight for visible faults/damage, including defects or discrepancies in colour or shine; check the edges of the flooring for straightness and any damage. No claims on surface defects will be accepted after installation.
- It is preferable to lay boards perpendicular to the window, following the direction of the main source of light. For the best result, make sure to always work from 3 to 4 cartons at a time, mixing the planks during the installation.
- Check if sub-floor/site conditions comply with the specifications described in these instructions. If you are not satisfied, do not install, and contact your supplier.
- Flooring products can be damaged by rough handling before installation. Exercise care when handling and transporting these products. Store, transport and handle the flooring planks in a manner to prevent any damage. Store cartons flat, never on the edge.
- Flooring products can be heavy and bulky. Always use proper lifting techniques when handling these products. Whenever possible, make use of material-handling equipment such as dollies or material carts. Never lift more than you can safely handle; get assistance if needed.
- Calculate the room surface prior to installation and plan an extra 15-20% of flooring for cutting waste.
- The environment where the flooring is to be installed is critically important with regard to successful installation and continued performance of the flooring products. The flooring is intended to be installed in interior locations only. These interior locations must meet climactic and structural requirements as well.
- In most cases, this product does not need to be acclimated. However, if the boxes of flooring were exposed over 2 hours to extreme temperatures under 50°F/10°C or over 104°F/40°C within the 12 hours before the installation, acclimation is required. In this case, keep the boards in room temperature for at least 12 hours in unopened package before you start the installation. The room temperature must be maintained consistently between 70-80°F/20-25°C before and during the installation.
- Flooring should only be installed in temperature-controlled environments. It is necessary to maintain a constant temperature of 70-80°F/20-25°C before and during the installation. Portable heaters are not recommended as they may not heat the room and sub-floor sufficiently. Kerosene heaters should never be used.
- After installation, make sure that the flooring is not exposed to temperatures less than 50°F/10°C or greater than 120°F/50°C.
- For floor surfaces exceeding 4356 sq. ft./400 m² and/or lengths exceeding 66 lineal ft./20lm, use expansion mouldings/joints.
- This product is designed to be resistant to wear, however no product is guaranteed against scratches or loss of gloss. Please be sure to follow our maintenance instructions to ensure that your floor remains new as long as possible.
- A combination of heat and sunlight can cause most home furnishings to fade and discolour. Avoid exposure to direct sunlight for prolonged periods. During peak sunlight hours, the use of blinds or drapes is recommended.

SUB-FLOOR INFORMATION

- Inspect your sub-floor before you begin, it must be structurally sound, clean, dry, flat and smooth. High-spots and bumps must be levelled. Deflections more than $\frac{3}{16}$ "/5mm within a 10ft./3m radius must be levelled out with an appropriate levelling compound, the same applies to unevenness of more than $\frac{1}{32}$ "/1mm within 8"/20cm.
- Ceramic tile floors, ceramic and marble grout joints, and irregularities in concrete should be filled and levelled.
- Depressions, deep grooves, expansion mouldings/joints and other sub-floor imperfections that exceed 4mm wide and 4mm depth must be filled with patching or levelling compound.
- Substrates must be free from excessive moisture or alkali. Remove dirt, paint, varnish, wax, oils, solvents, any foreign matter and contaminants.
- Do not use products containing petroleum, solvents or citrus oils to prepare substrates as they can cause staining and expansion of the new flooring.
- Although this flooring product is water-proof, it is not aimed to be used as a moisture barrier. The concrete moisture vapour emissions should not exceed 8lb/3.63kg (ASTM F1869)/90% RH (ASTM F2170) with a PH limit of 9/max. 2.5% moisture content (CM method).
- This flooring product is also not to be installed in areas that have a risk of flooding such as saunas or outdoor areas.
- Existing sheet vinyl floors should not be heavily cushioned and not exceed more than one layer of thickness. Soft underlayment and soft substrates will diminish the product's inherent strength in resisting indentations.



WOOD SUB-FLOORS

- If this flooring product is intended to be installed over an existing wooden floor, it is recommended to repair any loose boards or squeaks before you begin the installation.
- Nail or screw every 6"/15cm along joists to avoid squeaking.
- Basements and crawl spaces must be dry. Use of a 6mil/0.15mm poly-film is required to cover 100% of the crawl space earth.
- We recommend laying the flooring crossways to the existing floorboards.
- All other sub-floors - plywood, OSB, particleboard, chipboard, wafer board, etc. must be structurally sound and must be installed following their manufacturer's recommendations.

CONCRETE SUB-FLOORS

- Existing concrete sub-floors must be fully cured, at least 60 days old, smooth, permanently dry, clean, and free of all foreign material such as dust, wax, solvents, paint, grease, oils, and old adhesive residue. Curing agents and hardeners could cause bonding failure and should not be used.
- We recommend using a minimum 6mil/0.15mm poly-film as a moisture barrier between the concrete sub-floor and the flooring.

DO NOT INSTALL OVER

- Any type of carpet. Existing cushion-backed vinyl flooring. Floating floor of any type, loose lay, and perimeter fastened sheet vinyl. Hardwood flooring/wood sub-floors that lay directly on concrete or over dimensional lumber or plywood used over concrete.

IMPORTANT NOTICE

In-floor Radiant Heat: Flooring can be installed over $\frac{1}{2}$ "/12mm embedded radiant heat using the floating method. Maximum operating temperature should never exceed 85°F/30°C. Use of an in-floor temperature sensor is recommended to avoid overheating.

- Turn the heat off for 24 hours before, during and 24 hours after installation when installing over radiant heated sub-floors.
- Before installing over newly constructed radiant heat systems, operate the system at maximum capacity to force any residual moisture from the cementitious topping of the radiant heat system.
- Make sure that the temperature in the room is maintained consistently between 70-80°F/20-25°C before and during the installation.
- Floor temperature must not exceed 85°F/30°C.
- Once the installation has been completed, the heating system should be turned on and increased gradually (5-degree increments) until returning to normal operating conditions.
- Refer to the radiant heat system's manufacturer recommendations for additional guidance.

Warning: Electric heating mats that are not embedded into the sub-floor are not recommended for use underneath the floors. Using electric heating mats that are not embedded and applied directly underneath the floors could void the warranty for your floor in case of failure. It is best to install the flooring over embedded radiant floor heating systems and adhere to the guidelines listed above.

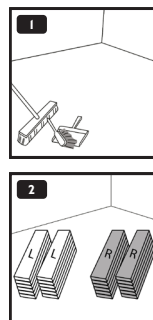
INSTALLATION

- Remove baseboard, quarter-round moldings, wall-based appliances and furniture from room. For best results, door trim should be under-cut to allow flooring to move freely without being pinched. After preparation work, sweep and vacuum the entire work area to remove all dust and debris.
- With a floating floor, you must always ensure you leave a $\frac{1}{4}$ "/6mm gap between walls and fixtures such as pillars, stairs, etc. These gaps will be covered with trim moldings after the floor is installed.
- Whenever possible, plan the layout so that the joints in the planks do not fall on top of joints or seams in the existing substrate.
- Do not install your kitchen cabinets directly over your floor. The floor's quality can only be guaranteed as long as the floor is allowed to move freely.
- Underlay:** This product has a pre-attached underlayment, the use of an additional underlayment could damage the locking mechanism and will void warranty.
- Cutting Tips:** To cut the plank, use a simple utility knife and ruler, and with the top side facing up, cut heavily and several times on the same axis. The knife will not go through the surface but make a deep cut. You can then lift one half of the plank using your other hand to hold down the second placing it very close to the cut. The plank will split naturally. For ease of installation, cuts may be made using a laminate or vinyl flooring cutter.

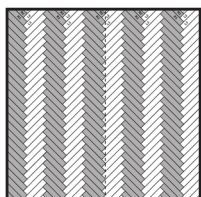
Attention: The letter "L" or "R" marked on the back of each herringbone plank indicate two different profiling directions. There is the same number of L planks and R planks in each box. Please pay attention to the markings and always install them paired together. In below instructions, L planks are represented in white, R marked planks are represented in grey.

1 - The sub-floor should be even, dry, clean. Carpet staples or glue residues must be removed, and the floor must be clean to ensure proper installation.

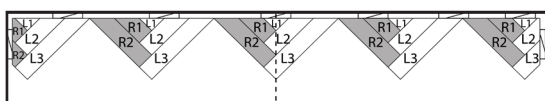
2 - Separating into distinctive piles will make it easier to find the correct plank should the L or R markings be cut off.



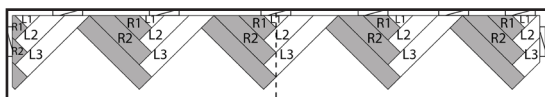
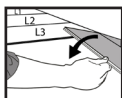
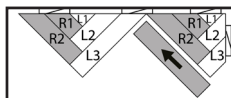
INSTALLATION METHOD - FISH-BONE PATTERN



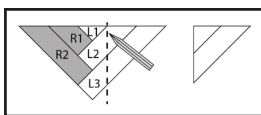
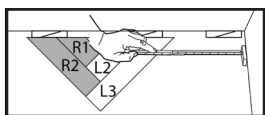
- At first, follow the cutting template on the inside of your box to cut the 5 pieces (L1, L2, L3, R1, R2) needed for one starting set. You will need a total of 5 planks in order to make the required 5 starting set pieces (L1, L2, L3, R1, R2). You won't be able to use offcuts of the same planks within one set.



- Align the first starting set with a chalk line going through the centre line of the room (to centre the installation, make sure the line goes through the tip of the pattern). Always leave a $\frac{1}{4}$ "/6 mm expansion gap with the wall.



- Each starting set is 34.25"/ 870mm wide, measure how many starting sets you will need based on the width of the room. You can connect the starting sets with one full plank.



- When you reach the walls on both sides, measure the distance between the wall and the closest starting set. Assemble a new set, mark the measured distance on it, cut the planks (the set can be disassembled for this) and install the planks in the gap.
- Continue this pattern until the room is entirely covered.

CLICKING TIPS

Place the short end tight to perpendicular plank. Click it into the long end of the parallel panel at a 45° angle. Fold down in a single movement. It is recommended to slightly tap the planks on the edge after clicking them together to make sure they are clicked tightly.

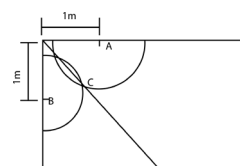
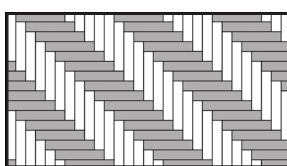
Note: If you notice both planks aren't at the same height or are not well locked together, please follow the disassembling instructions at the bottom of the page, disassemble and check if any debris stuck inside the lock is obstructing.

WARNING - FAILURE TO PROPERLY LINE UP THE END JOINT AND ATTEMPTING TO FORCE IT IN WHILE OUT OF ALIGNMENT COULD RESULT IN PERMANENT DAMAGE TO THE END JOINT.

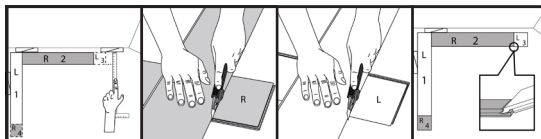
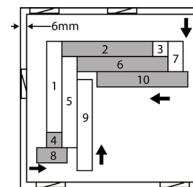
DISASSEMBLING

To disassemble, simply lift the planks one by one following the opposite sequence as the installation.

INSTALLATION METHOD - FISH-BONE DIAGONAL PATTERN

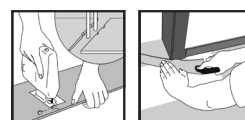


- Using a pencil, string and ruler, draw a line at 45° that is used to align the pattern according to the image. You can then start staggering spacers across your wall, leaving a $\frac{1}{4}$ "/6mm expansion gap with the wall.
- Start from the left corner opposite from the door. Use an "L" marked plank first and put the tongue sides against the wall. Then take your 2nd plank (marked "R") and place it perpendicularly to the 1st (Refer to the clicking tips on the bottom of the page). For the 3rd and 4th plank, refer to the cutting tips below. Continue the installation according to the sequence.
- Cutting Tips:** To install the 3rd (L), 4th (R) and any other plank that will have the short side against the wall, measure the length of the plank to fit and cut accordingly. Make sure you use the correct side of the plank (see images below).



- This sequence is given as an example, it will depend on the shape of the room. It is important to always start with the planks placed against the walls.

Holes For Pipes: Measure the diameter of the pipe and drill a hole that is $\frac{1}{16}$ "/20mm larger. Saw off a piece and lay the board in place on the floor. Then lay the sawed-off piece in place.



Door Moulding & Skirting:

Lay a board (with the decorative side down) next to the door moulding and as shown in the figure. Then slide the floorboard under moulding.

FINISHING THE INSTALLATION

- Replace moulding or wall base, allowing slight clearance between the moulding and the planks. Nail the moulding to the wall surface, not through the flooring. At doorways and at other areas where the flooring planks may meet other flooring surfaces, the use of a transition moulding is required to cover the exposed edge but do not pinch the planks. Leave a $\frac{1}{4}$ "/6mm gap between the planks and the adjoining surface.

MAINTENANCE

- Sweep or vacuum daily using soft bristle attachments.
- Clean up spills and excessive liquids immediately.
- Damp mop as needed and use cleaners recommended for vinyl flooring.
- The use of residential steam mops on this product is allowed. Use at lowest power with a suitable soft pad, and do not hold a steam mop on one spot for an extended period of time (longer than 5 minutes). Refer to the steam mop's manufacturer instructions for proper usage.
- Use proper floor protection devices such as felt protectors under furniture.
- Place a walk-off mat at outside entrances to reduce the amount of dirt brought into your home. Do not use mats with a latex or rubber backing since these backings can cause permanent discolouration.
- Do not use abrasive cleaners, bleach or wax to maintain the floor.
- Do not drag or slide heavy objects across the floor.

Where To Find & Contact Us

Johnson Tiles Head Office

Harewood Street, Tunstall,
Stoke on Trent, Staffordshire,
ST6 5JZ, United Kingdom

Tel: +44 (0) 1782 575 575
Email: info@johnson-tiles.com
www.johnson-tiles.com

Material Lab Studio

10 Great Titchfield Street,
London, W1W 8BB,
United Kingdom

Tel: +44 (0) 20 7436 8629
Email: info@material-lab.co.uk
www.material-lab.co.uk

Johnson Tiles Factory Outlet

Tel: +44 (0) 1782 524 040
Email: foutlet@johnson-tiles.com
www.outlet.johnson-tiles.com

Customer Services

Tel: +44 (0) 1782 524 000
Email: sales@johnson-tiles.com

Order A Sample

Tel: +44 (0) 1782 524 043
Email: samples@johnson-tiles.com

Technical Advice

Tel: +44 (0) 1782 524 111
Email: ddunlop@johnson-tiles.com

Launched: November 2022

K L I X
RIGID LUXURY
VINYL FLOORING

JOHNSON • TILES 
MADE IN THE UK SINCE 1901

Johnson Tiles is a division of Norcros Group (Holdings) Limited,
Ladyfield House, Station Road, Wilmslow, Cheshire, SK9 1BU,
United Kingdom. Registered in England number 566694.