

# HUDSON

GLAZED CERAMIC & PORCELAIN | WALL & FLOOR TILES

STONE EFFECT TILES

SELECT



JOHNSON • TILES 

MADE IN THE UK SINCE 1901



# HUDSON

Hudson's stone effect tiles are complemented by a colour palette that includes the warm sandy tones of New Jersey to the deep, moodier greys of Brooklyn, each evoking a sense of the urban city. Structure comes to the fore with this range, with both Rockfall and Sandbar available in a Matt finish. Rockfall delivers a riven texture, Sandbar features a fragmented linear effect and Natural achieves a weathered, distressed look. Size options are available from 150x150mm up to 600x600mm.

*Front Cover Image: New Jersey Natural 600x600mm - HUDS2N*



Albany White Natural 150x150mm - HUDS1N  
Brooklyn Natural 150x150mm - HUDS4N





## Roomset Photography



Manhattan Natural 600x600mm - HUDS3N



New Jersey Sandbar Matt 600x300mm - HUDS2S



Albany White Rockfall Matt 600x300mm - HUDS1R



New Jersey Natural 600x600mm - HUDS2N





## Colours & Product Codes

V2: Low to Moderate Shade Variation



### ALBANY WHITE

(N) HUDS1N PEI: IV LRV: 56



### NEW JERSEY

(N) HUDS2N PEI: IV LRV: 54



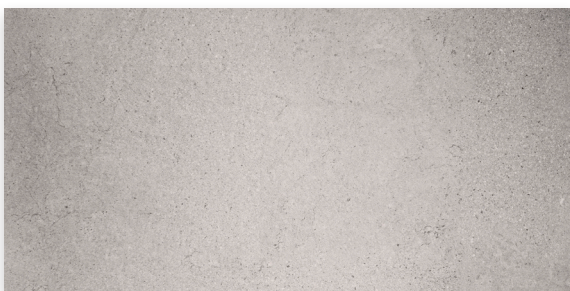
### MANHATTAN

(N) HUDS3N PEI: IV LRV: 38



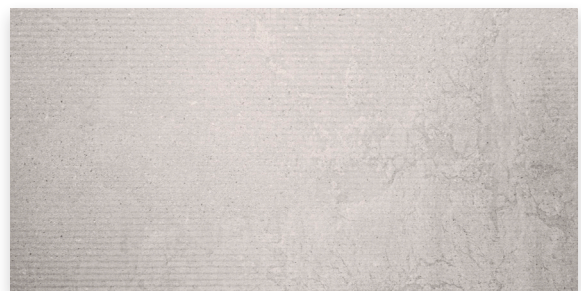
### BROOKLYN

(N) HUDS4N PEI: II LRV: 16



### ALBANY WHITE ROCKFALL STRUCTURE

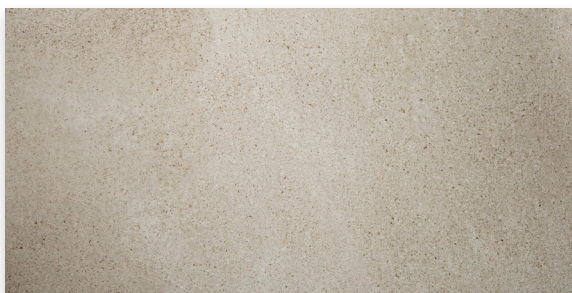
(M) HUDS1R LRV: 56



### ALBANY WHITE SANDBAR STRUCTURE

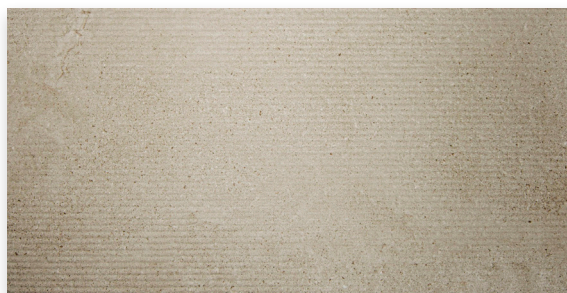
(M) HUDS1S LRV: 56





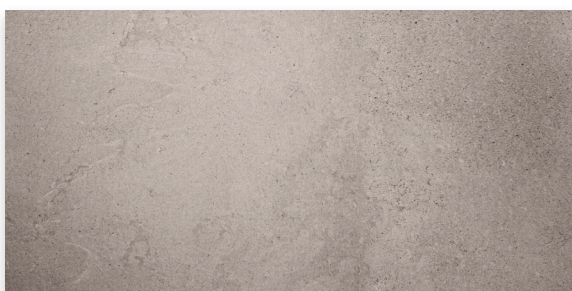
**NEW JERSEY ROCKFALL STRUCTURE**

(M) HUDS2R LRV: 54



**NEW JERSEY SANDBAR STRUCTURE**

(M) HUDS2S LRV: 54



**MANHATTAN ROCKFALL STRUCTURE**

(M) HUDS3R LRV: 38

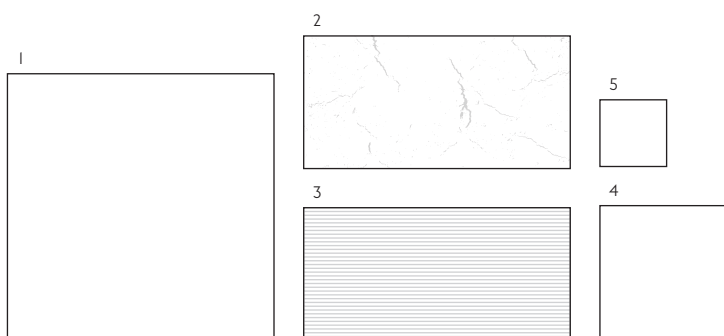


**MANHATTAN SANDBAR STRUCTURE**

(M) HUDS3S LRV: 38



### Sizes, Finishes & Availability



#	Size	Finish	Colour Availability	Thickness	Pieces/Box	Coverage/Box	Weight/Box
1	600x600mm	(N) Natural	All Colours Shown	10.5mm	3 Tiles	1.08 m <sup>2</sup>	26.10 kg
2	600x300mm Rockfall Structure	(M) Matt	Albany White, New Jersey & Manhattan Only	10mm	5 Tiles	0.90 m <sup>2</sup>	16.00 kg
3	600x300mm Sandbar Structure	(M) Matt	Albany White, New Jersey & Manhattan Only	10mm	5 Tiles	0.90 m <sup>2</sup>	16.00 kg
4	300x300mm	(N) Natural	All Colours Shown	8.3mm	13 Tiles	1.17 m <sup>2</sup>	21.60 kg
5	150x150mm	(N) Natural	All Colours Shown	8.3mm	35 Tiles	0.79 m <sup>2</sup>	14.25 kg

**Note:** All sizes indicated are metric modular. All dimensions are in millimetres. All sizes shown are nominal. For the most up-to-date availability information, please visit our website. All LRV results are from Johnson Tiles' internal test reports and are to be used for guidance only. LRV: Light Reflectance Value.



## Technical Data

### Specification

Range	Size	Wall Suitability	Floor Suitability	Wet Barefoot	CSV	Material
Hudson	600x300x10mm	Internal Only	-	-	V2	Glazed Ceramic [BIII]
Hudson	All Other Sizes	Internal & External	Internal Only	-	V2	Glazed Porcelain [BIa]

### Floor Values

Finish	Colour	PTV (4S)	PTV (TRL)	R Value	Wet Ramp	PEI	Traffic
Natural	Brooklyn	Dry 36+ Wet 36+	-	R10	-	II	Light Commercial
Natural	All Other Colours	Dry 36+ Wet 36+	-	R10	-	IV	Commercial

**Note:** Due to the manufacturing process of all floor tiles there may be small variations in slip resistance. Given this, please refer to our website for the most up-to-date information. The slip resistance properties of a surface can only be maintained with the implementation of an effective regular cleaning and maintenance regime. The frequency of cleaning should be determined by the property manager based on the potential level of surface contaminants. The need for an additional regular cleaning and maintenance regime is further heightened when tiles are used for external floor and wet barefoot applications. PTV: Pendulum Test Value.

### Physical Properties - Glazed Ceramic (BIII)

Test/Standard	Requirement	Test Result	Test/Standard	Requirement	Test Result
<b>Length / Width</b> EN ISO 10545 - 2	$\pm 0.5\% \leq \pm 2\text{mm}$	$\leq \pm 0.25\%$	<b>Modulus of Rupture</b> EN ISO 10545 - 4	Min. 15N / mm <sup>2</sup>	$\geq 25\text{N} / \text{mm}^2$
<b>Thickness</b> EN ISO 10545 - 2	$\pm 10\% \leq \pm 0.5\text{mm}$	$\pm 2.5\%$	<b>Thermal Shock</b> EN ISO 10545 - 9	Pass	Pass
<b>Straightness of Side</b> EN ISO 10545 - 2	$\pm 0.3\% \leq \pm 1.5\text{mm}$	$\pm 0.15\%$	<b>Frost Resistance</b> EN ISO 10545 - 12	-	Not Suitable
<b>Rectangularity</b> EN ISO 10545 - 2	$\pm 0.5\% \leq \pm 2\text{mm}$	$\pm 0.4\%$	<b>Chemical Resistance</b> EN ISO 10545 - 13	Min. Class B	Class A - B
<b>Surface Flatness</b> EN ISO 10545 - 2	$\pm 0.5\% \leq \pm 2\text{mm}$	$\pm 0.3\%$	<b>Stain Resistance</b> EN ISO 10545 - 14	Min. Class 3	Class 3
<b>Water Absorption</b> EN ISO 10545 - 3	10% to 20%	15% to 17%	<b>Fire Rating</b>	-	Class A I Non Combustible
<b>Weight / M<sup>2</sup></b>	18.00 kg 10mm thick				

**Note:** All products are classed as BIII - Glazed Ceramic. All products conform to BS EN 14411.

### Physical Properties - Glazed Porcelain (BIa)

Test/Standard	Requirement	Test Result	Test/Standard	Requirement	Test Result
<b>Length / Width</b> EN ISO 10545 - 2	$\pm 0.6\% \leq \pm 2\text{mm}$	$\pm 0.2\%$	<b>Modulus of Rupture</b> EN ISO 10545 - 4	Min. 35N / mm <sup>2</sup>	$\geq 35\text{N} / \text{mm}^2$
<b>Thickness</b> EN ISO 10545 - 2	$\pm 5\% \leq \pm 0.5\text{mm}$	$\pm 3\%$	<b>Thermal Shock</b> EN ISO 10545 - 9	Pass	Pass
<b>Straightness of Side</b> EN ISO 10545 - 2	$\pm 0.5\% \leq \pm 1.5\text{mm}$	$\pm 0.3\%$	<b>Frost Resistance</b> EN ISO 10545 - 12	Resistant	Resistant
<b>Rectangularity</b> EN ISO 10545 - 2	$\pm 0.5\% \leq \pm 2\text{mm}$	$\pm 0.2\%$	<b>Chemical Resistance</b> EN ISO 10545 - 13	Min. Class B	Pass
<b>Surface Flatness</b> EN ISO 10545 - 2	$\pm 0.5\% \leq \pm 0.5\text{mm}$	$\pm 0.2\%$	<b>Stain Resistance</b> EN ISO 10545 - 14	Min. Class 3	Pass
<b>Water Absorption</b> EN ISO 10545 - 3	$\leq 0.5\%$	$\leq 0.08\%$	<b>Fire Rating</b>	-	Class A I <sub>FL</sub> Non Combustible
<b>Weight / M<sup>2</sup></b>	24.20 kg 10.5mm thick	18.47 kg 8.3mm thick			

**Note:** All products are classed as BIa - Glazed Porcelain. All products conform to BS EN 14411.



## Sustainability Information

Range	Material	Recycled Content of the Tiles	Recycled Content of the Packaging	Recyclable Content of the Packaging	EPD	SKA Rating
Hudson	Glazed Ceramic [BIII]	Up to 20%	Up to 100%	Up to 100%	-	-
Hudson	Glazed Porcelain [BIa]	Up to 10%	Up to 100% (Boxes)	Up to 100%	Yes	-

**Note:** EPD: Environmental Product Declaration for the products shown in this overview can be on the Hudson pages on our website.

## Important Information

During the manufacturing process of ceramic, vitrified and porcelain tiles, some variation in shade and pattern can occur. Before fixing any tiles, several boxes should be opened and their contents mixed to ensure that size, colour, shade and patterning are acceptable. The tiles shown are quality products and conform to the physical properties listed below.

- All sizes shown are metric modular.
- For specific suitability and fit-for-purpose details please contact our technical helpline.
- Johnson Tiles cannot accept responsibility for any tiles that have been fixed.
- Every effort has been made to ensure the accuracy of the information given.
- Johnson Tiles reserves the right to change specifications and availability without prior notice.
- Nothing in these statements does or will affect the statutory rights of the consumer.

© Johnson Tiles, Johnson, Absolute and Material Lab are registered trademarks and together with Kerastar and product names are the trademarks of H&R Johnson Tiles Limited and licensed to Norcros Group (Holdings) Limited trading as Johnson Tiles. © 2021 Johnson Tiles. All rights reserved.



New Jersey Natural 600x600mm - HUDS2N

For more information about Hudson or  
any of our other product ranges simply visit  
**[www.johnson-tiles.com](http://www.johnson-tiles.com)** |      

#### **Where To Find Us**

##### **Johnson Tiles**

Harewood Street,  
Tunstall,  
Stoke on Trent,  
Staffordshire,  
ST6 5JZ

Tel: +44 (0)1782 575 575  
Fax: +44 (0)1782 577 377  
Email: [info@johnson-tiles.com](mailto:info@johnson-tiles.com)

---

##### **Samples Enquiries**

Tel: +44 (0)1782 524 043  
Fax: +44 (0)1782 577 379  
Email: [samples@johnson-tiles.com](mailto:samples@johnson-tiles.com)

---

##### **Technical Helpline**

Tel: +44 (0)1782 524 111  
Fax: +44 (0)1782 577 379  
Email: [techadvice@johnson-tiles.com](mailto:techadvice@johnson-tiles.com)

*Launched: September 2018    Updated: February 2021*

**JOHNSON • TILES**   
MADE IN THE UK SINCE 1901