

# COUNTY

GLAZED CERAMIC & PORCELAIN | WALL & FLOOR TILES

STONE EFFECT TILES **INTRO**



JOHNSON • TILES 

MADE IN THE UK SINCE 1901



# COUNTY

County presents a neutral colour palette including Classic White and Rustic Taupe. With elements of natural stone, County showcases a weathered look to create natural variation for a room full of character. Wave décor options are also available in Natural Grey, Old Stone, and Rustic Taupe to complement the field tiles.

*Front Cover Image: Old Stone Matt 300x200mm - CNY01A, Old Stone Wave Structure Matt 300x200mm - CNY01W & Old Stone Matt 305x305mm - CNY01F*



Natural Grey Matt 305x305mm - CNY03F





## Colours & Product Codes

V2: Low to Moderate Shade Variation



### OLD STONE

Ⓜ CNY01A + Ⓜ CNY01F

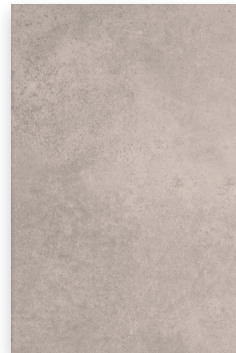
PEI: III LRV: 54



### CLASSIC WHITE

Ⓜ CNY02A + Ⓜ CNY02F

PEI: III LRV: 62



### NATURAL GREY

Ⓜ CNY03A + Ⓜ CNY03F

PEI: III LRV: 53



### RUSTIC TAUPE

Ⓜ CNY04A + Ⓜ CNY04F

PEI: III LRV: 40



### OLD STONE WAVE STRUCTURE

Ⓜ CNY01W LRV: 54



### NATURAL GREY WAVE STRUCTURE

Ⓜ CNY03W LRV: 53

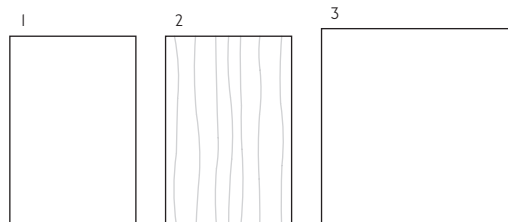


### RUSTIC TAUPE WAVE STRUCTURE

Ⓜ CNY04W LRV: 40



## Sizes, Finishes & Availability



#	Size	Finish	Colour Availability	Thickness	Pieces/Box	Coverage/Box	Weight/Box
1	300x200mm	Ⓜ Matt	All Colours Shown	8mm	17 Tiles	1.02 m <sup>2</sup>	14.00 kg
2	300x200mm Wave Structure	Ⓜ Matt	Old Stone, Rustic Taupe & Natural Grey Only	8mm	17 Tiles	1.02 m <sup>2</sup>	14.00 kg
3	305x305mm	Ⓜ Matt	All Colours Shown	8mm	12 Tiles	1.12 m <sup>2</sup>	18.00 kg

**Note:** All sizes indicated are metric modular. All dimensions are in millimetres. All sizes shown are nominal. For the most up-to-date availability information, please visit our website. All LRV results are from Johnson Tiles' internal test reports and are to be used for guidance only. LRV: Light Reflectance Value.



## Technical Data

### Specification

Range	Size	Wall Suitability	Floor Suitability	Wet Barefoot	CSV	Material
County	300x200mm	Internal Only	-	-	V2	Glazed Ceramic [BIII]
County	305x305x8mm	Internal & External	Internal Only	-	V2	Glazed Porcelain [BIa]

### Floor Values

Finish	Colour	PTV (4S)	PTV (TRL)	R Value	Wet Ramp	PEI	Traffic
Matt	All Other Colours	Dry 36+ Wet 25 - 35	-	-	-	III	Light Commercial

**Note:** Due to the manufacturing process of all floor tiles there may be small variations in slip resistance. Given this, please refer to our website for the most up-to-date information. The slip resistance properties of a surface can only be maintained with the implementation of an effective regular cleaning and maintenance regime. The frequency of cleaning should be determined by the property manager based on the potential level of surface contaminants. The need for an additional regular cleaning and maintenance regime is further heightened when tiles are used for external floor and wet barefoot applications. PTV: Pendulum Test Value.

### Physical Properties - Glazed Ceramic (BIII)

Test/Standard	Requirement	Test Result	Test/Standard	Requirement	Test Result
Length / Width EN ISO 10545 - 2	$\pm 0.5\% \leq \pm 2\text{mm}$	$\leq \pm 0.25\%$	Modulus of Rupture EN ISO 10545 - 4	Min. 15N / mm <sup>2</sup>	$\geq 25\text{N} / \text{mm}^2$
Thickness EN ISO 10545 - 2	$\pm 10\% \leq \pm 0.5\text{mm}$	$\pm 2.5\%$	Thermal Shock EN ISO 10545 - 9	Pass	Pass
Straightness of Side EN ISO 10545 - 2	$\pm 0.3\% \leq \pm 1.5\text{mm}$	$\pm 0.15\%$	Frost Resistance EN ISO 10545 - 12	-	Not Suitable
Rectangularity EN ISO 10545 - 2	$\pm 0.5\% \leq \pm 2\text{mm}$	$\pm 0.4\%$	Chemical Resistance EN ISO 10545 - 13	Min. Class B	Class A - B
Surface Flatness EN ISO 10545 - 2	$\pm 0.5\% \leq \pm 2\text{mm}$	$\pm 0.3\%$	Stain Resistance EN ISO 10545 - 14	Min. Class 3	Class 3
Water Absorption EN ISO 10545 - 3	10% to 20%	15% to 17%	Fire Rating	-	Class A I Non Combustible
Weight / M <sup>2</sup>	16.00 kg 8mm thick				

**Note:** All products are classed as BIII - Glazed Ceramic. All products conform to BS EN 14411.

### Physical Properties - Glazed Porcelain (BIa)

Test/Standard	Requirement	Test Result	Test/Standard	Requirement	Test Result
Length / Width EN ISO 10545 - 2	$\pm 0.6\% \leq \pm 2\text{mm}$	Pass	Modulus of Rupture EN ISO 10545 - 4	Min. 35N / mm <sup>2</sup>	$\geq 35\text{N} / \text{mm}^2$
Thickness EN ISO 10545 - 2	$\pm 5\% \leq \pm 0.5\text{mm}$	Pass	Thermal Shock EN ISO 10545 - 9	Pass	Pass
Straightness of Side EN ISO 10545 - 2	$\pm 0.5\% \leq \pm 1.5\text{mm}$	Pass	Frost Resistance EN ISO 10545 - 12	Resistant	Resistant
Rectangularity EN ISO 10545 - 2	$\pm 0.5\% \leq \pm 2\text{mm}$	Pass	Chemical Resistance EN ISO 10545 - 13	Min. Class B	Pass
Surface Flatness EN ISO 10545 - 2	$\pm 0.5\% \leq \pm 0.5\text{mm}$	Pass	Stain Resistance EN ISO 10545 - 14	Min. Class 3	Class 5
Water Absorption EN ISO 10545 - 3	$\leq 0.5\%$	$\leq 0.5\%$	Fire Rating	-	Class A I <sub>FL</sub> Non Combustible
Weight / M <sup>2</sup>	16.00 kg 8mm thick				

**Note:** All products are classed as BIa - Glazed Porcelain. All products conform to BS EN 14411.



**Sustainability Information**

Range	Material	Recycled Content of the Tiles	Recycled Content of the Packaging	Recyclable Content of the Packaging	EPD	SKA Rating
County	Glazed Ceramic [BIII]	Up to 20%	Up to 100%	Up to 100%	-	-
County	Glazed Porcelain [BIa]	Up to 30%	Some Part Recycled	Up to 100% (Boxes)	-	-

**Important Information**

During the manufacturing process of ceramic, vitrified and porcelain tiles, some variation in shade and pattern can occur. Before fixing any tiles; several boxes should be opened and their contents mixed to ensure that size, colour, shade and patterning are acceptable. The tiles shown are quality products and conform to the physical properties listed below.

- All sizes shown are metric modular.
- For specific suitability and fit-for-purpose details please contact our technical helpline.
- Johnson Tiles cannot accept responsibility for any tiles that have been fixed.
- Every effort has been made to ensure the accuracy of the information given.
- Johnson Tiles reserves the right to change specifications and availability without prior notice.
- Nothing in these statements does or will affect the statutory rights of the consumer.

© Johnson Tiles, Johnson, Absolute and Material Lab are registered trademarks and together with Kerastar and product names are the trademarks of H&R Johnson Tiles Limited and licensed to Norcros Group (Holdings) Limited trading as Johnson Tiles. © 2021 Johnson Tiles. All rights reserved.



Natural Grey Matt 300x200mm - CNY03A  
 Natural Grey Wave Structure Matt 300x200mm - CNY03W

For more information about County or  
any of our other product ranges simply visit  
**[www.johnson-tiles.com](http://www.johnson-tiles.com)** |      

#### **Where To Find Us**

##### **Johnson Tiles**

Harewood Street,  
Tunstall,  
Stoke on Trent,  
Staffordshire,  
ST6 5JZ

Tel: +44 (0)1782 575 575  
Fax: +44 (0)1782 577 377  
Email: [info@johnson-tiles.com](mailto:info@johnson-tiles.com)

---

##### **Samples Enquiries**

Tel: +44 (0)1782 524 043  
Fax: +44 (0)1782 577 379  
Email: [samples@johnson-tiles.com](mailto:samples@johnson-tiles.com)

---

##### **Technical Helpline**

Tel: +44 (0)1782 524 111  
Fax: +44 (0)1782 577 379  
Email: [techadvice@johnson-tiles.com](mailto:techadvice@johnson-tiles.com)

*Launched: October 2016   Updated: September 2018*

**JOHNSON • TILES**   
MADE IN THE UK SINCE 1901