

# KERASTAR

UN-GLAZED PORCELAIN | FLOOR & WALL TILES

STONE EFFECT TILES

INTRO



JOHNSON • TILES 

MADE IN THE UK SINCE 1901

# KERASTAR

The Kerastar range of porcelain floor tiles – developed specifically for the commercial interiors market – features an architectural-friendly colour palette from the lightest shades of Chalk and Linen right through the spectrum to the darker tones of Shadow, Graphite and Night. The colours included in the range are complementary to suit any commercial installation, all available in a single natural finish and with two different surfaces effects dependent upon usage – Discface and Rocktop, for applications where extra slip resistance is needed. Available in three sizes of 200x200mm, 300x300mm and 600x600mm, the Kerastar range reflects the ongoing trend for large- format floor tiles to enhance the sense of space. Fittings within the range include cove, skirting and step tread, making it the ideal flooring solution for commercial specification.

*Front Cover Image: Linen Natural 300x300mm - KER502 & Shadow Natural 300x300mm - KER507*



Putty Natural 600x600mm - KER505





## Roomset Photography

---



Linen Natural 300x300mm - KER502  
Cord Natural 300x300mm - KER511



Shadow Natural 300x300mm - KER507



Chalk Natural 300x300mm - KER501



Granite Natural 300x300mm - KER517



## Colours & Product Codes

VI: Low Shade Variation



**STRING**

(N) KER503 LRV: 54



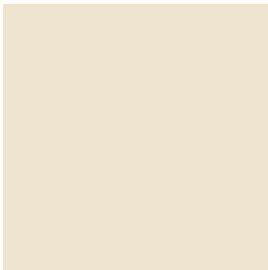
**CLAY**

(N) KER506 LRV: 21



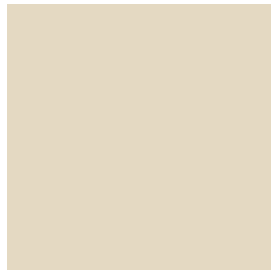
**SHADOW**

(N) KER507 LRV: 12



**CHALK**

(N) KER501 LRV: 64



**LINEN**

(N) KER502 LRV: 55



**MUD**

(N) KER504 LRV: 24



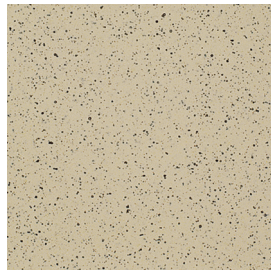
**PUTTY**

(N) KER505 LRV: 29



**NIGHT**

(N) KER508 LRV: 8



**HAIL**

(N) KER509 LRV: 42



**BISCUIT**

(N) KER510 LRV: 54



**CORD**

(N) KER511 LRV: 40



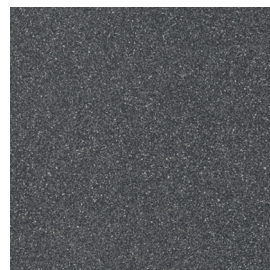
**FAWN**

(N) KER512 LRV: 24



**PUMICE**

(N) KER514 LRV: 38



**GRAPHITE**

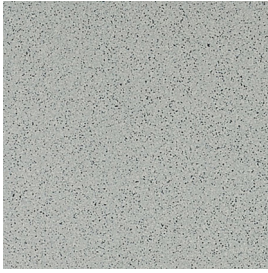
(N) KER515 LRV: 13



**NIGHT SKY**

(N) KER516 LRV: 8

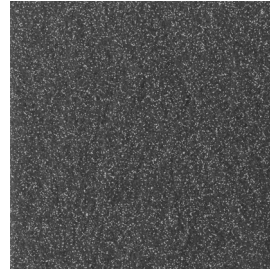




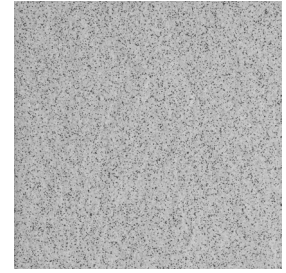
**GRANITE**  
 (N) KER517 LRV: 32



**HAIL**  
 ROCKTOP STRUCTURE  
 (N) RT509 LRV: 42



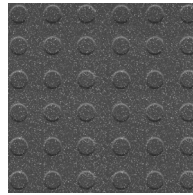
**GRAPHITE**  
 ROCKTOP STRUCTURE  
 (N) RT515 LRV: 13



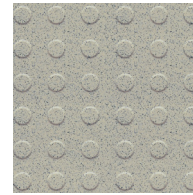
**GRANITE**  
 ROCKTOP STRUCTURE  
 (N) RT517 LRV: 32



**HAIL**  
 DISCFACE STRUCTURE  
 (N) KER509 LRV: 42



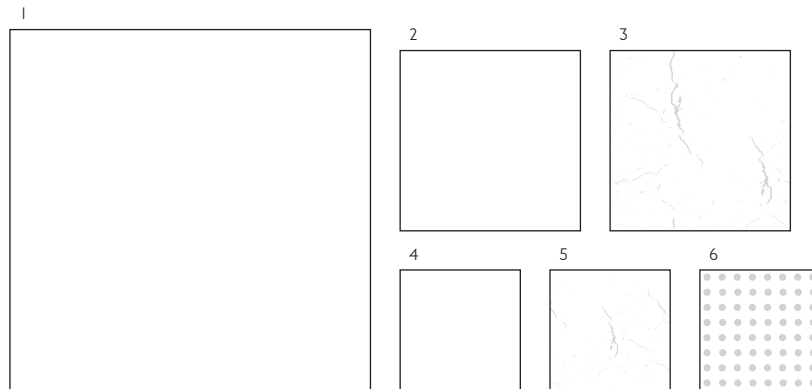
**GRAPHITE**  
 DISCFACE STRUCTURE  
 (N) KER515 LRV: 13



**GRANITE**  
 DISCFACE STRUCTURE  
 (N) KER517 LRV: 32



## Sizes, Finishes & Availability



#	Size	Finish	Colour Availability	Thickness	Pieces/Box	Coverage/Box	Weight/Box
1	600x600mm	(N) Natural	Sting, Clay & Shadow Only	10.5mm	2 Tiles	0.72 m <sup>2</sup>	17.40 kg
2	300x300mm	(N) Natural	All Colours Shown	8.3mm	13 Tiles	1.17 m <sup>2</sup>	21.00 kg
3	300x300mm Rocktop Structure	(N) Natural	Hail, Graphite & Granite Only	8.3mm	13 Tiles	1.17 m <sup>2</sup>	21.00 kg
4	200x200mm	(N) Natural	String, Clay, Hail, Graphite & Granite Only	8.3mm	31 Tiles	1.24 m <sup>2</sup>	22.48 kg
5	200x200mm Rocktop Structure	(N) Natural	Hail, Graphite & Granite Only	8.3mm	31 Tiles	1.24 m <sup>2</sup>	22.48 kg
6	200x200mm Discface Structure	(N) Natural	Hail, Graphite & Granite Only	8.3mm	31 Tiles	1.24 m <sup>2</sup>	22.48 kg

**Note:** All sizes indicated are metric modular. All dimensions are in millimetres. All sizes shown are nominal. For the most up-to-date availability information, please visit our website. All LRV results are from Johnson Tiles' internal test reports and are to be used for guidance only. LRV: Light Reflectance Value.



## Additional Fittings

V1: Low Shade Variation



### CHALK

(N) KER501 LRV: 64



### LINEN

(N) KER502 LRV: 55



### STRING

(N) KER503 LRV: 54



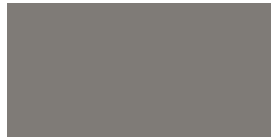
### MUD

(N) KER504 LRV: 24



### PUTTY

(N) KER505 LRV: 29



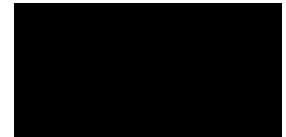
### CLAY

(N) KER506 LRV: 21



### SHADOW

(N) KER507 LRV: 12



### NIGHT

(N) KER508 LRV: 8



### HAIL

(N) KER509 LRV: 42



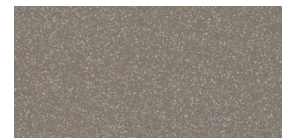
### BISCUIT

(N) KER510 LRV: 54



### CORD

(N) KER511 LRV: 40



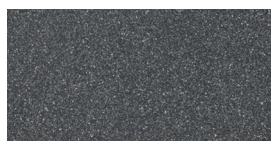
### FAWN

(N) KER512 LRV: 24



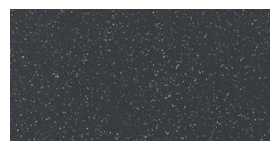
### PUMICE

(N) KER514 LRV: 38



### GRAPHITE

(N) KER515 LRV: 13



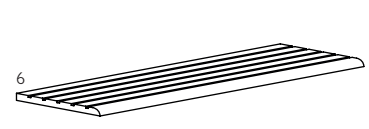
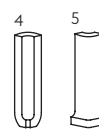
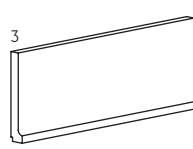
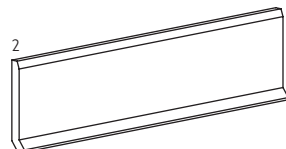
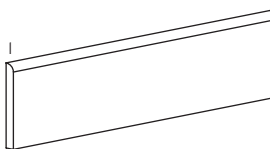
### NIGHT SKY

(N) KER516 LRV: 8



### GRANITE

(N) KER517 LRV: 32



#	Size	Finish	Colour Availability	Thickness	Pieces/Box	Coverage/Box	Weight/Box
1	300x95mm Round Top Skirting	(N) Natural	All Colours Shown	8.3mm	34 Tiles	10.2 lm	18.30 kg
2	300x100mm Cove (Sit-on)	(N) Natural	All Colours Shown	8.3mm	34 Tiles	10.2 lm	18.12 kg
3	200x100mm Cove (Sit-in)	(N) Natural	String, Clay, Hail, Graphite & Granite Only	8.3mm	50 Tiles	15.0 lm	18.00 kg
4	100x30mm Cove Int. Angle (Sit-in)	(N) Natural	String, Clay, Hail, Graphite & Granite Only	8.3mm	1 Tile	-	0.14 kg
5	100x30mm Cove Ext. Angle (Sit-in)	(N) Natural	String, Clay, Hail, Graphite & Granite Only	8.3mm	1 Tile	-	0.14 kg
6	300x95mm Step Tread	(N) Natural	String, Clay & Shadow Only	8.3mm	34 Tiles	10.2 lm	17.60 kg

**Note:** All sizes indicated are metric modular. All dimensions are in millimetres. All sizes shown are nominal. For the most up-to-date availability information, please visit our website. All LRV results are from Johnson Tiles' internal test reports and are to be used for guidance only. LRV: Light Reflectance Value.



## Technical Data

### Specification

Range	Size	Wall Suitability	Floor Suitability	Wet Barefoot	CSV	Material
Kerastar	All Sizes Shown	Internal & External	Internal Only	-	VI	Un-glazed Porcelain [Bla]
Kerastar	Rocktop Structure	Internal & External	Internal & External	Yes	VI	Un-glazed Porcelain [Bla]
Kerastar	Dicface Structure	Internal & External	Internal & External	Yes	VI	Un-glazed Porcelain [Bla]

### Floor Values

Finish	Colour	PTV (4S)	PTV (TRL)	R Value	Wet Ramp	PEI	Traffic
Natural	All Colours Shown	Dry 36+ Wet 36+	-	R9	-	-	Commercial
Rocktop Structure	All Colours Shown	Dry 36+ Wet 36+	36+	R11	C	-	Commercial
Discface Structure	All Colours Shown	Dry 36+ Wet 36+	36+	R11	C	-	Commercial

**Note:** Due to the manufacturing process of all floor tiles there may be small variations in slip resistance. Given this, please refer to our website for the most up-to-date information. The slip resistance properties of a surface can only be maintained with the implementation of an effective regular cleaning and maintenance regime. The frequency of cleaning should be determined by the property manager based on the potential level of surface contaminants. The need for an additional regular cleaning and maintenance regime is further heightened when tiles are used for external floor and wet barefoot applications. PTV: Pendulum Test Value.

### Physical Properties

Test/Standard	Requirement	Test Result	Test/Standard	Requirement	Test Result
<b>Length / Width</b> EN ISO 10545 - 2	$\pm 0.6\% \leq \pm 2\text{mm}$	$\pm 0.2\%$	<b>Modulus of Rupture</b> EN ISO 10545 - 4	Min. 35N / mm <sup>2</sup>	$\geq 45\text{N} / \text{mm}^2$
<b>Thickness</b> EN ISO 10545 - 2	$\pm 5\% \leq \pm 0.5\text{mm}$	$\pm 4\%$	<b>Thermal Shock</b> EN ISO 10545 - 9	Pass	Pass
<b>Straightness of Side</b> EN ISO 10545 - 2	$\pm 0.5\% \leq \pm 1.5\text{mm}$	$\pm 0.2\%$	<b>Frost Resistance</b> EN ISO 10545 - 12	Resistant	Resistant
<b>Rectangularity</b> EN ISO 10545 - 2	$\pm 0.5\% \leq \pm 2\text{mm}$	$\pm 0.3\%$	<b>Chemical Resistance</b> EN ISO 10545 - 13	Min. Class B	Pass
<b>Surface Flatness</b> EN ISO 10545 - 2	$\pm 0.5\% \leq \pm 0.5\text{mm}$	$\pm 0.3\%$	<b>Stain Resistance</b> EN ISO 10545 - 14	Min. Class 3	$\geq \text{Class 2}$
<b>Water Absorption</b> EN ISO 10545 - 3	$\leq 0.5\%$	$\leq 0.08\%$	<b>Fire Rating</b>	-	Class A I <sub>FL</sub> Non Combustible
<b>Weight / M<sup>2</sup></b>	24.50 kg 10.5mm thick	18.12 kg 8.3mm thick			

**Note:** All products are classed as Bla - Un-glazed Porcelain. All products conform to BS EN 14411.

### Sustainability Information

Range	Material	Recycled Content of the Tiles	Recycled Content of the Packaging	Recyclable Content of the Packaging	EPD	SKA Rating
Kerastar	Un-glazed Porcelain [Bla]	Up to 70%	Up to 100% (Boxes)	Up to 100%	Yes	-

**Note:** EPD: Environmental Product Declaration for the products shown in this overview can be on the Kerastar pages on our website.

### Important Information

During the manufacturing process of ceramic, vitrified and porcelain tiles, some variation in shade and pattern can occur. Before fixing any tiles; several boxes should be opened and their contents mixed to ensure that size, colour, shade and patterning are acceptable. The tiles shown are quality products and conform to the physical properties listed below.

- All sizes shown are metric modular.
- For specific suitability and fit-for-purpose details please contact our technical helpline.
- Johnson Tiles cannot accept responsibility for any tiles that have been fixed.
- Every effort has been made to ensure the accuracy of the information given.
- Johnson Tiles reserves the right to change specifications and availability without prior notice.
- Nothing in these statements does or will affect the statutory rights of the consumer.

© Johnson Tiles, Johnson, Absolute and Material Lab are registered trademarks and together with Kerastar and product names are the trademarks of H&R Johnson Tiles Limited and licensed to Norcros Group (Holdings) Limited trading as Johnson Tiles. © 2021 Johnson Tiles. All rights reserved.



For more information about Kerastar or  
any of our other product ranges simply visit  
**www.johnson-tiles.com** |      

#### **Where To Find Us**

##### **Johnson Tiles**

Harewood Street,  
Tunstall,  
Stoke on Trent,  
Staffordshire,  
ST6 5JZ

Tel: +44 (0)1782 575 575  
Fax: +44 (0)1782 577 377  
Email: [info@johnson-tiles.com](mailto:info@johnson-tiles.com)

---

##### **Samples Enquiries**

Tel: +44 (0)1782 524 043  
Fax: +44 (0)1782 577 379  
Email: [samples@johnson-tiles.com](mailto:samples@johnson-tiles.com)

---

##### **Technical Helpline**

Tel: +44 (0)1782 524 111  
Fax: +44 (0)1782 577 379  
Email: [techadvice@johnson-tiles.com](mailto:techadvice@johnson-tiles.com)

*Launched: March 2014*

**JOHNSON • TILES**   
MADE IN THE UK SINCE 1901