

STONELEIGH

GLAZED PORCELAIN & CERAMIC | FLOOR & WALL TILES

STONE

ABSOLUTE



JOHNSON • TILES

MADE IN THE UK SINCE 1901



STONELEIGH



6 SIZES



4 COLOURS



4 FINISHES

Explore surface decoration with Stoneleigh. The decorative wall tiles in this range offer structured tactile detail with the Diamond option and varied patterning with the Linear design. Easily create a striking feature wall with these tiles inspired by the trend for geometric shapes in interior spaces.

Combine different formats from across the range for a modern, urban look.





Ivory Natural 1200x1200x9mm - STL01N



Charcoal Natural 1200x1200x9mm - STL03N



Grey Linear Structure Matt 900x300x11mm - STL2LD

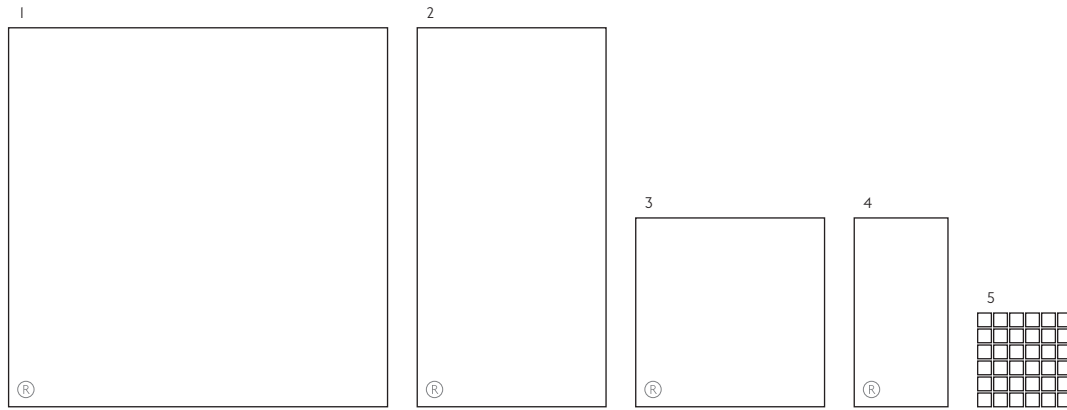


Grey Matt 900x300x10.6mm - STL02M
 Grey Diamond Structure Matt 900x300x11mm - STL2DD
 Grey Natural 1200x600x10.5mm - STL02N

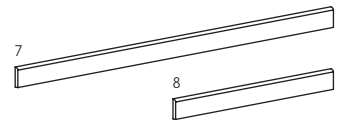
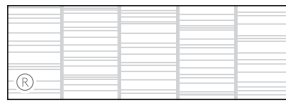
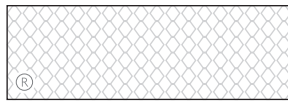


Size Formats

Sizing & Packing Information



6 - Wall Tiles Only (BIII)

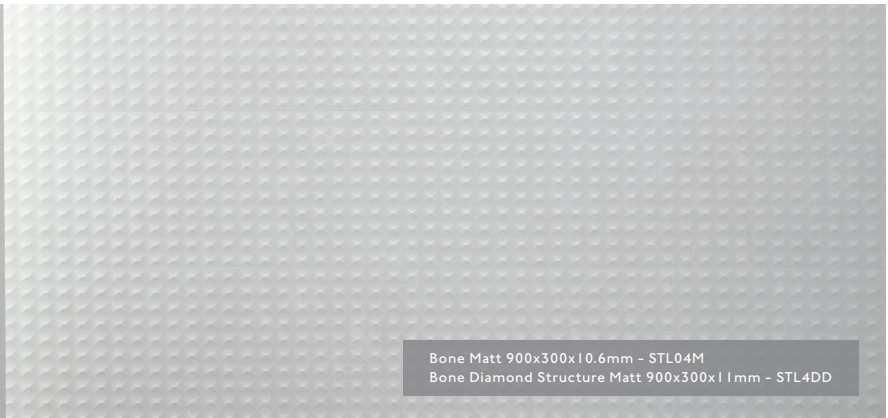


#	Size	Thickness	Finish	Structure	Colour Availability	Pcs / Box	M2 / Box	Kg / Box
1	1200x1200mm	9mm	(N) Natural	-	All Colours	1 Tile	1.44m ²	30.32kg
2	1200x600mm	10.5mm	(N) Natural	-	All Colours	2 Tiles	1.44m ²	35.50kg
		9.3mm	(P) Polished	-	Ivory & Grey Only	2 Tiles	1.44m ²	31.00kg
3	600x600mm	10mm	(N) Natural	-	All Colours	3 Tiles	1.08m ²	24.00kg
			(G) Grip	-	All Colours	3 Tiles	1.08m ²	24.00kg
4	600x300mm	10mm	(N) Natural	-	All Colours	6 Tiles	1.08m ²	23.50kg
5	300x300mm (50x50mm) Square Mosaic	10mm	(N) Natural	-	All Colours	11 Sheets	0.99m ²	23.10kg

6	900x300mm	10.6mm	(M) Matt	-	All Colours	5 Tiles	1.35m ²	18.50kg
		11mm	(M) Matt	Diamond	All Colours	5 Tiles	1.35m ²	18.50kg
			(M) Matt	Linear	All Colours	5 Tiles	1.35m ²	18.50kg

#	Fitting	Thickness	Finish	Structure	Colour Availability	Pcs / Box	LM / Box	Kg / Box
7	1200x75mm Round Top Skirting	10.5mm	(N) Natural	-	All Colours	9 Tiles	10.80lm	18.00kg
8	600x75mm Round Top Skirting	10mm	(N) Natural	-	All Colours	15 Tiles	9.00lm	16.98kg
		9.3mm	(P) Polished	-	Ivory & Grey Only	15 Tiles	9.00lm	16.98kg

Note: All sizes indicated are metric modular. All sizes shown are nominal. (R) Rectified Edge.
For the most up-to-date product availability information for this range, please visit our website - www.johnson-tiles.com



Bone Matt 900x300x10.6mm - STL04M
Bone Diamond Structure Matt 900x300x11mm - STL4DD



Colours & Product Codes

V2: Low to Moderate Shade Variation



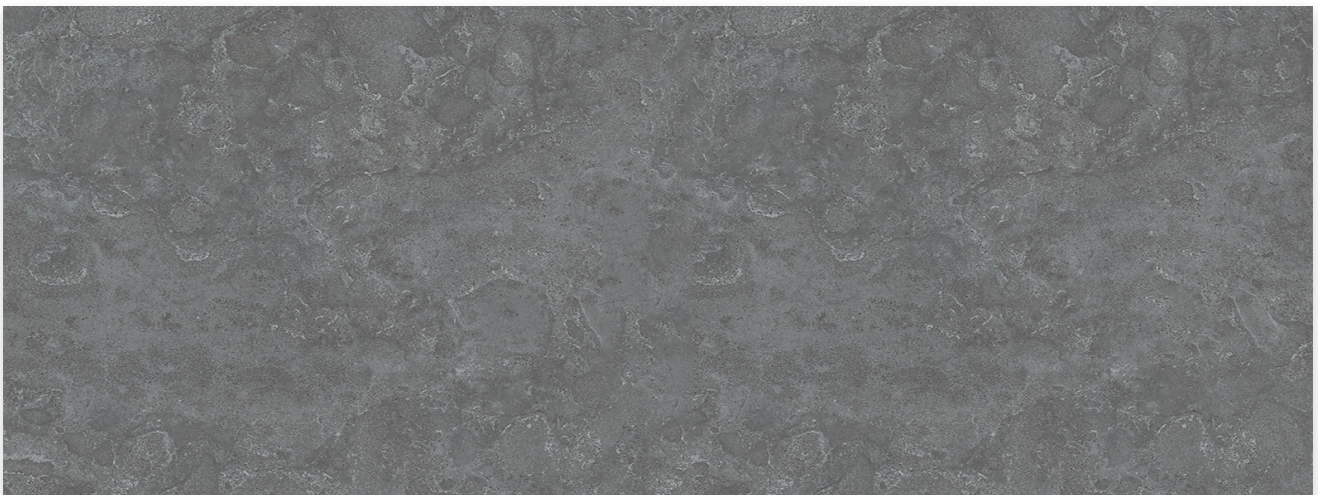
IVORY LRV: 42 PEI: IV

Product Codes (Bla): N STL01N + G STL01G + P STL01P | Mosaic Codes (Bla): N STL1NM | Fitting Codes (Bla): N STL1NS + P STL1PS



GREY LRV: 34 PEI: IV + PEI: III - Polished Only

Product Codes (Bla): N STL02N + G STL02G + P STL02P | Mosaic Codes (Bla): N STL2NM | Fitting Codes (Bla): N STL2NS + P STL2PS



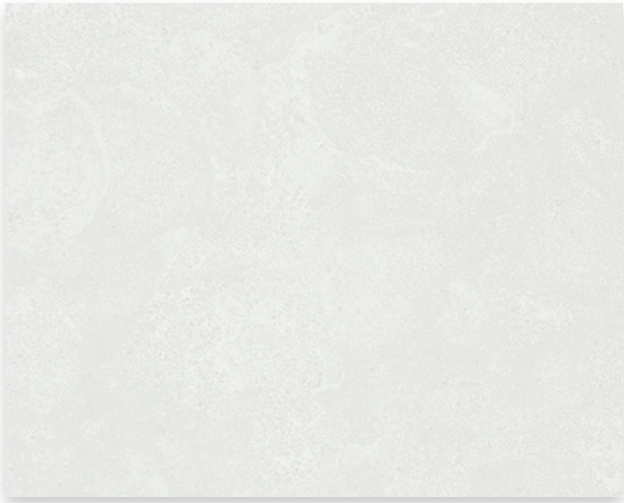
CHARCOAL LRV: 16 PEI: II

Product Codes (Bla): N STL03N + G STL03G | Mosaic Codes (Bla): N STL3NM | Fitting Codes (Bla): N STL3NS



Colours & Product Codes

V2: Low to Moderate Shade Variation



BONE (LRV: 64)

Product Codes (BIII) Wall Tiles Only: (M) STL04M



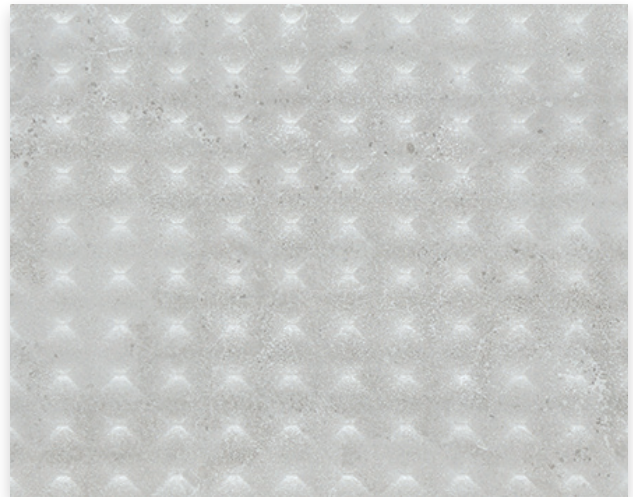
GREY (LRV: 38)

Product Codes (BIII) Wall Tiles Only: (M) STL02M



BONE DIAMOND STRUCTURE (LRV: 64)

Product Codes (BIII) Wall Tiles Only: (M) STL4DD



GREY DIAMOND STRUCTURE (LRV: 38)

Product Codes (BIII) Wall Tiles Only: (M) STL2DD



BONE LINEAR STRUCTURE (LRV: 64)

Product Codes (BIII) Wall Tiles Only: (M) STL4LD



GREY LINEAR STRUCTURE (LRV: 38)

Product Codes (BIII) Wall Tiles Only: (M) STL2LD



Technical, Sustainability & Important Information

Specification

Range	Finish	Wall Suitability	Floor Suitability	Wet Barefoot	CSV	Material
Stoneleigh	Natural	Internal & External	Internal Only	-	V2	Glazed Porcelain (Bla)
	Grip	Internal & External	Internal & External	Yes	V2	Glazed Porcelain (Bla)
	Polished	Internal & External	Internal Only	-	V2	Glazed Porcelain (Bla)
	Matt	Internal Only	-	-	V2	Glazed Ceramic (BIII)

Floor Values

Finish	Structure	Colour	PTV (4S)	PTV (TRL)	R Value	Wet Ramp	PEI	Traffic
Natural	-	Ivory & Grey	Dry 36+ Wet 25 - 35	-	R 10	-	IV	Commercial
	-	Charcoal	Dry 36+ Wet 25 - 35	-	R 10	-	II	Domestic
Grip	-	Ivory & Grey	Dry 36+ Wet 36+	Wet 36+	R 11	-	IV	Commercial
	-	Charcoal	Dry 36+ Wet 36+	Wet 36+	R 11	-	II	Domestic
Polished	-	Ivory	Dry 36+ Wet 0 - 24	-	-	-	IV	Commercial
	-	Grey	Dry 36+ Wet 0 - 24	-	-	-	III	Light Commercial

Physical Properties - Glazed Porcelain (Bla)

Test & Standard	Requirement	Test Result	Test & Standard	Requirement	Test Result
Length / Width EN ISO 10545 - 2	$\pm 0.6\% \leq \pm 2\text{mm}$	$\pm 0.5\text{mm}$	Modulus of Rupture EN ISO 10545 - 4	Min. 35N / mm ²	Pass
Thickness EN ISO 10545 - 2	$\pm 5\% \leq \pm 0.5\text{mm}$	$\pm 0.5\text{mm}$	Thermal Shock EN ISO 10545 - 9	Pass	Pass
Straightness of Side EN ISO 10545 - 2	$\pm 0.5\% \leq \pm 1.5\text{mm}$	$\pm 0.4\text{mm}$	Frost Resistance EN ISO 10545 - 12	Resistant	Resistant
Rectangularity EN ISO 10545 - 2	$\pm 0.5\% \leq \pm 2\text{mm}$	$\pm 0.6\text{mm}$	Chemical Resistance EN ISO 10545 - 13	Min. Class B	Pass
Surface Flatness EN ISO 10545 - 2	$\pm 0.5\% \leq \pm 2\text{mm}$	$\pm 0.12\%$	Stain Resistance EN ISO 10545 - 14	Min. Class 3	Pass
Water Absorption EN ISO 10545 - 3	$\leq 0.5\%$	Pass	Fire Rating	-	Class A I FL Non Combustible
Weight / M ²	24.66kg 10.5mm thick	22.33kg 10mm thick 22.50kg 9.5mm thick	21.53kg 9.3mm thick 21.06kg 9mm thick		

Physical Properties - Glazed Ceramic (BIII)

Test & Standard	Requirement	Test Result	Test & Standard	Requirement	Test Result
Length / Width EN ISO 10545 - 2	$\pm 0.5\% \leq \pm 2\text{mm}$	$\pm 0.5\%$	Modulus of Rupture EN ISO 10545 - 4	Min. 15N / mm ²	Pass
Thickness EN ISO 10545 - 2	$\pm 10\% \leq \pm 0.5\text{mm}$	$\pm 0.5\text{mm}$	Thermal Shock EN ISO 10545 - 9	Pass	Pass
Straightness of Side EN ISO 10545 - 2	$\pm 0.3\% \leq \pm 1.5\text{mm}$	$\pm 0.07\%$	Frost Resistance EN ISO 10545 - 12		Not Suitable
Rectangularity EN ISO 10545 - 2	$\pm 0.5\% \leq \pm 2\text{mm}$	$\pm 0.07\%$	Chemical Resistance EN ISO 10545 - 13	Min. Class B	Class A
Surface Flatness EN ISO 10545 - 2	$\pm 0.5\% \leq \pm 2\text{mm}$	$\pm 0.15\%$	Stain Resistance EN ISO 10545 - 14	Min. Class 3	Class 5
Water Absorption EN ISO 10545 - 3	10% to 20%	$\geq 10\%$	Fire Rating	-	Class A I Non Combustible
Weight / M ²	17.13kg 11mm thick	17.13kg 10.6mm thick			

Sustainability Information

Range	Material	EPD	Recycled Content of the Tiles	Recycled Content of the Packaging	Recyclable Content of the Packaging
Stoneleigh	Glazed Porcelain (Bla)	Yes	Up to 40%	Up to 100% (Boxes)	Up to 100% (Boxes)
	Glazed Ceramic (BIII)	Yes	Up to 40%	Up to 100% (Boxes)	Up to 100% (Boxes)

Note: Due to the manufacturing process of all floor tiles there may be small variations in slip resistance. Given this, please refer to our website for the most up-to-date information. The slip resistance properties of a surface can only be maintained with the implementation of an effective regular cleaning and maintenance regime. The frequency of cleaning should be determined by the property manager based on the potential level of surface contaminants. The need for an additional regular cleaning and maintenance regime is further heightened when tiles are used for external floor and wet barefoot applications. Please contact our technical helpline, or visit our website for specification and installation advice. All glazed porcelain (Bla) and glazed ceramic (BIII) products listed conform to BS EN 14411. CSV: Colour Shade Variation. PTV (4S): Pendulum Test Value - Slider 96. PTV (TRL): Pendulum Test Value - Slider 55. R Value (DIN 51130). Wet Ramp (DIN 51097). PEI: Porcelain Enamel Institute. For a full overview of our environmental credentials please visit www.johnson-tiles.com/about/sustainability. EPD: Environmental Product Declaration.



Technical, Sustainability & Important Information

Important Information

During the manufacturing process of ceramic and porcelain tiles, some variation in shade and pattern can occur. Before fixing any tiles, several boxes should be opened and their contents mixed to ensure that size, colour, shade and patterning are acceptable. The tiles shown are quality products and conform to the physical properties listed. For a comprehensive colour, size and finish overview along with full technical and sustainability information for all of the product shown in this product presenter, please visit our website – www.johnson-tiles.com.

- All sizes shown are metric modular.
- For specific suitability details please contact our technical department.
- Johnson Tiles cannot accept responsibility for tiles that have been fixed.
- Every effort has been made to ensure the accuracy of the information given.
- Johnson Tiles reserves the right to change specification and availability information without prior notice.
- Nothing in these statements does/will affect the statutory rights of the consumer.

© Johnson Tiles, Johnson, Absolute and Material Lab are registered trademarks and together with Kerastar and product names are the trademarks of H&R Johnson Tiles Limited and licensed to Norcros Group (Holdings) Limited trading as Johnson Tiles. © 2022 Johnson Tiles. All rights reserved.



All product technical values quoted in this product presenter are supported by laboratory testing from our own and independent ceramic test houses. Johnson Tiles are British Standard registered and all products conform to the standards set in BS EN 14411.

For the reassurance of single-source supply, Johnson Tiles offers a free of charge NBS M40 specification writing service featuring the Norcros Adhesives range of tile fixing products. To find out more or for any questions or queries relating to any tile related technical information featured in this product presenter, please contact our technical advice helpline on +44 (0)1782 524111 or email ddunlop@johnson-tiles.com

The colours shown in this sample tile wallet and attached booklet are as accurate as printing processes will allow. Please refer to actual product samples before specifying. Every effort has been made to ensure the accuracy of the information given.



Grey Polished 1200x600x9.3mm - STL02P

For more information about Stoneleigh or
any of our other product ranges simply visit

www.johnson-tiles.com |      

Where To Find & Contact Us

Johnson Tiles Head Office

Harewood Street, Tunstall,
Stoke on Trent, Staffordshire,
ST6 5JZ, United Kingdom

Tel: +44 (0)1782 575 575
Email: info@johnson-tiles.com
www.johnson-tiles.com

Material Lab Studio

10 Great Titchfield Street,
London, W1W 8BB,
United Kingdom

Tel: +44 (0)20 7436 8629
Email: info@material-lab.co.uk
www.material-lab.co.uk

Johnson Tiles Factory Outlet

Tel: +44 (0)1782 524 040
Email: foutlet@johnson-tiles.com
www.outlet.johnson-tiles.com

Customer Services

Tel: +44 (0)1782 524 000
Email: sales@johnson-tiles.com

Order A Sample

Tel: +44 (0)1782 524 043
Email: samples@johnson-tiles.com

Technical Advice

Tel: +44 (0)1782 524 111
Email: ddunlop@johnson-tiles.com

Launched: March 2022

JOHNSON • TILES 
MADE IN THE UK SINCE 1901

Johnson Tiles is a division of Norcros Group (Holdings) Limited,
Ladyfield House, Station Road, Wilmslow, Cheshire, SK9 1BU,
United Kingdom. Registered in England number 566694.