

BARBROOK

GLAZED CERAMIC | WALL TILES

COLOUR

STRUCTURE

ABSOLUTE



www.johnson-tiles.com

© 2024 Johnson Tiles Limited

Est. 1901
**JOHNSON
TILES**

BARBROOK



EIGHT COLOURS



TWO SIZES



ONE FINISH

Introducing Barbrook, a distinctive blend of rustic charm and modern design. This glazed ceramic wall tile collection offers two stylish small format sizes: 250x50mm and the trendy 250x125mm KitKat-style strips. With a versatile selection of eight colours, including chic Mint, vibrant Marine, and dusky Chestnut, Barbrook seamlessly fits into any design scheme. Each tile features a gloss finish to enhance light reflection in the room, while the irregular edges provide a hand-crafted aesthetic. The high shade variation ensures a truly unique and individualised finish, breathing life into any interior space. Get creative with a variety of layout patterns, including herringbone and basket weave.

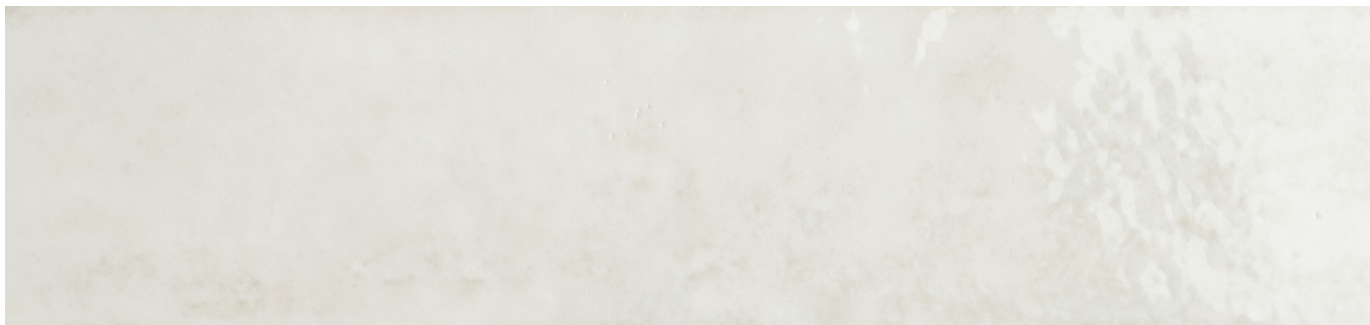






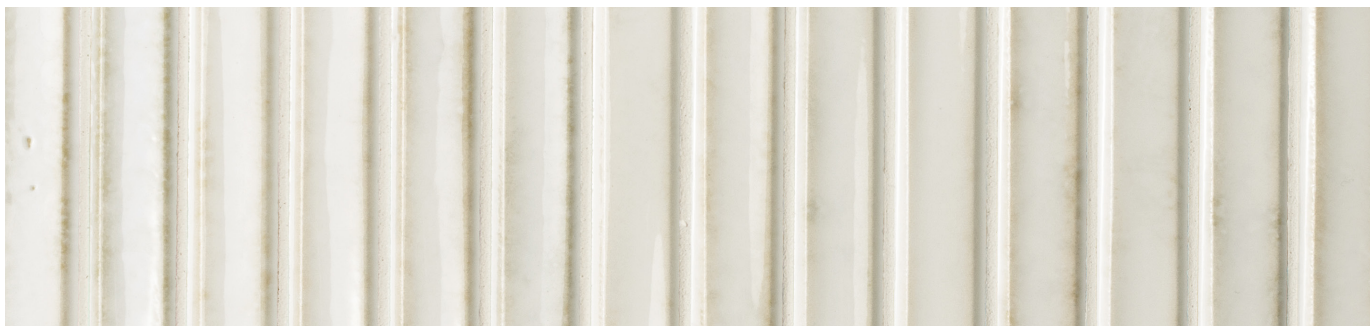
COLOURS AND PRODUCT CODES

V4: High Shade Variation



PEARL LRV: 73

Product Code:  BAR01A



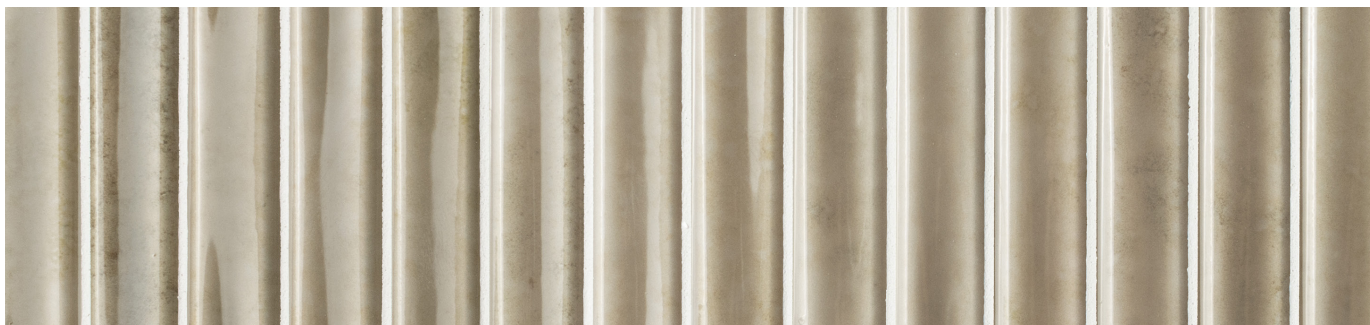
PEARL - STRIPS LRV: 73

Product Code:  BAR01D



SAND LRV: 32

Product Code:  BAR02A

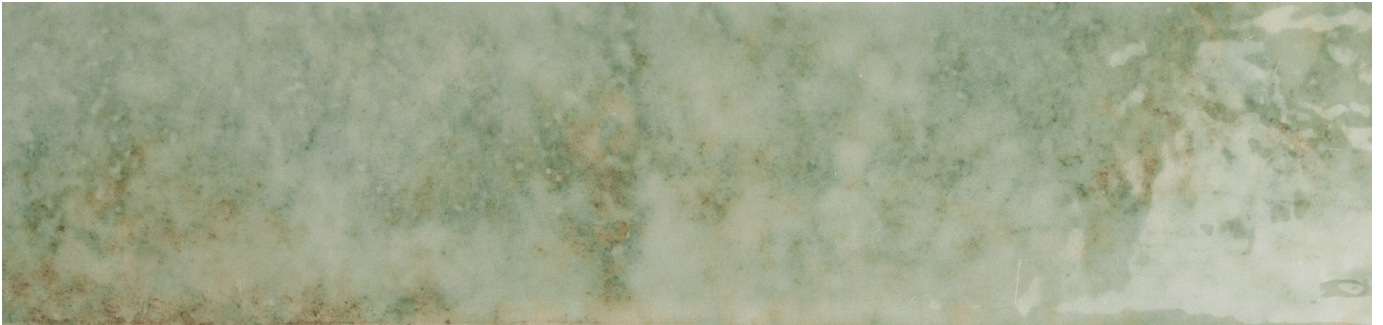


SAND - STRIPS LRV: 32

Product Code:  BAR02D

COLOURS AND PRODUCT CODES

V4: High Shade Variation



MINT LRV: 36

Product Code:  BAR03A




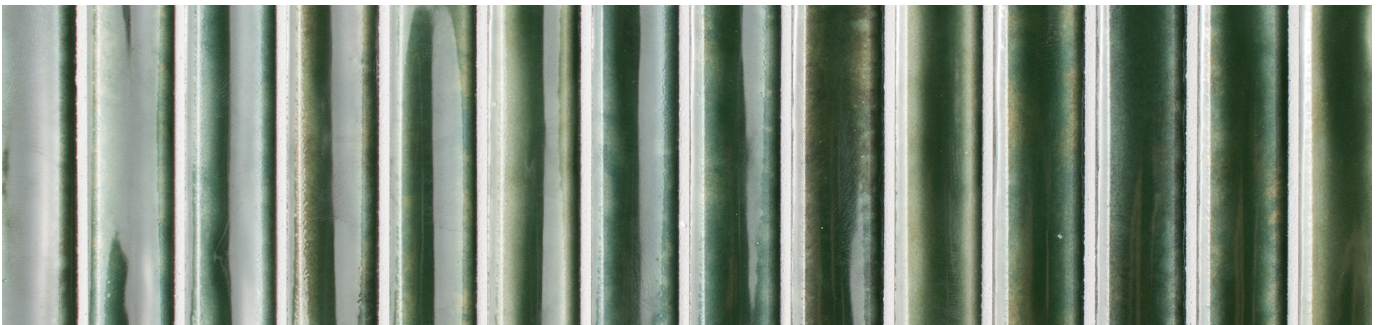
MINT - STRIPS LRV: 36

Product Code:  BAR03D



FERN LRV: 16

Product Code:  BAR04A



FERN - STRIPS LRV: 16

Product Code:  BAR04D

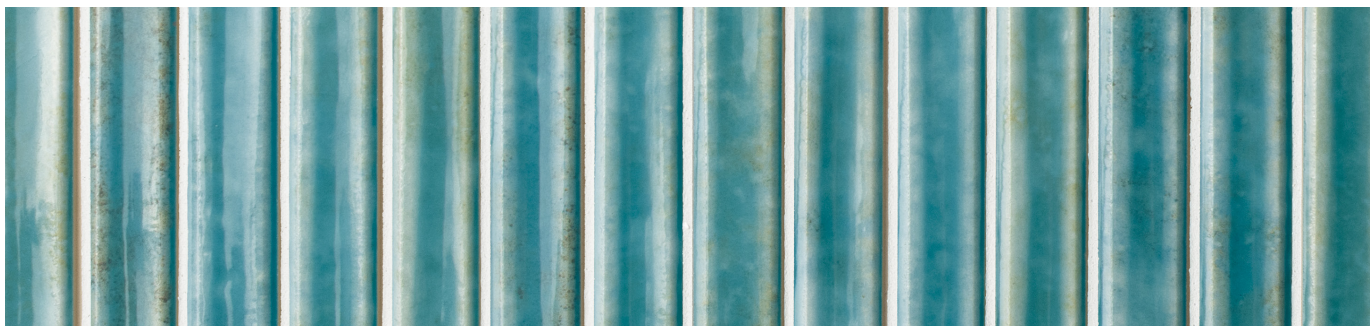
COLOURS AND PRODUCT CODES

V4: High Shade Variation



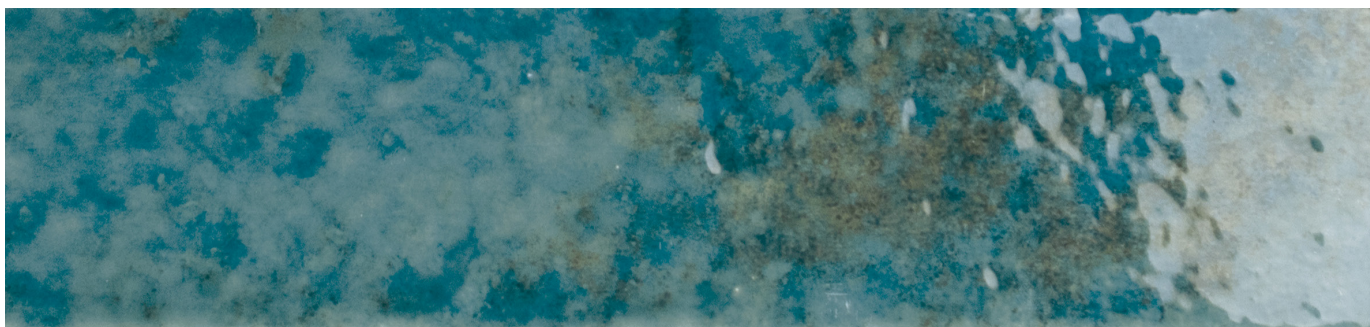
MARINE LRV: 26

Product Code:  BAR05A



MARINE - STRIPS LRV: 26

Product Code:  BAR05D



OCEAN LRV: 13

Product Code:  BAR06A

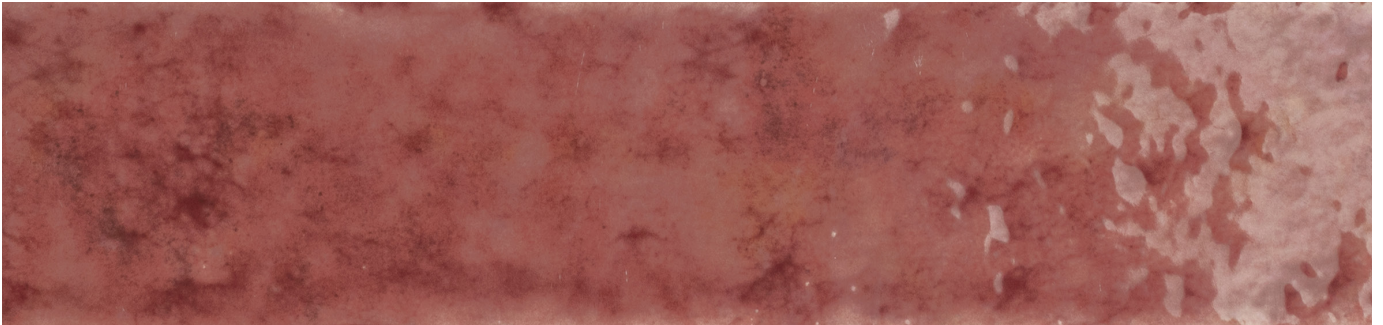


OCEAN - STRIPS LRV: 13

Product Code:  BAR06D

COLOURS AND PRODUCT CODES

V4: High Shade Variation



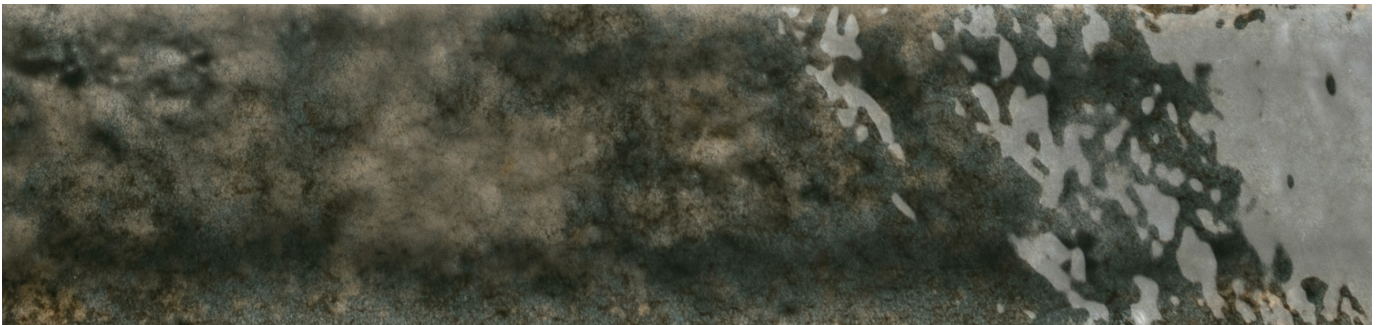
BURGUNDY LRV: 13

Product Code: G BAR07A



BURGUNDY - STRIPS LRV: 13

Product Code: G BAR07D



CHESTNUT LRV: 12

Product Code: G BAR08A

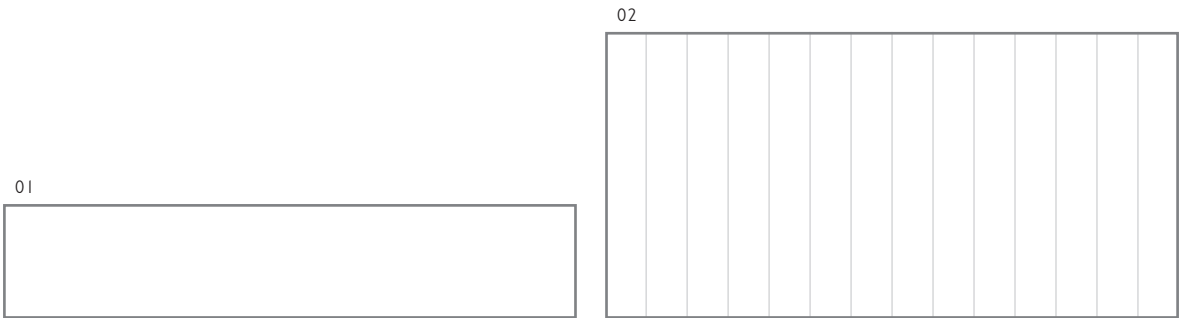


CHESTNUT - STRIPS LRV: 12

Product Code: G BAR08D

SIZE FORMATS AND AVAILABILITY

Size Options and Packing Information



#	Size Format	Thickness	Finish	Structure	Availability	Class	Pcs / Box	M ² / Box	Kg / Box
01	250x50mm	8.5mm	Gloss	-	All Colours Shown	BIII	60 Tiles	0.75 m ²	9.84 kg
02	250x125mm	10.5mm	Gloss	Strips	All Colours Shown	BIII	14 Tiles	0.43 m ²	7.25 kg

Note: Glazed Ceramic / BIII tiles. For more information please see the suitability advice given in the technical section. All sizes indicated are metric modular. All sizes shown are nominal. For the most up-to-date size, colour and finish availability, please visit our website - www.johnson-tiles.com.




Sand Strips Gloss 250x125x10.5mm - BAR02D









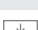

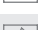
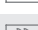
TECHNICAL SUPPORT

Specification, Sustainability and Important Information

Product Specification

Range Name	Finish	Wall Suitability	Floor Suitability	Wet Barefoot	Material / Class
Barbrook	 Gloss	Internal Only	-	-	Glazed Ceramic / BIII

Physical Properties - Glazed Ceramic / BIII

Test and Standard	Requirement	Result	Test and Standard	Requirement	Result
 Length / Width EN ISO 10545-2	$\pm 0.5\% \leq \pm 2\text{mm}$	Pass	 Modulus of Rupture EN ISO 10545-4	Min. 15N / mm ²	Pass
 Thickness EN ISO 10545-2	$\pm 10\% \leq \pm 0.5\text{mm}$	Pass	 Thermal Shock EN ISO 10545-9	Pass	Pass
 Straightness of Side EN ISO 10545-2	$\pm 0.3\% \leq \pm 1.5\text{mm}$	Pass	 Frost Resistance EN ISO 10545-12	-	Not Suitable
 Rectangularity EN ISO 10545-2	$\pm 0.5\% \leq \pm 2\text{mm}$	Pass	 Chemical Resistance EN ISO 10545-13	Min. Class B	Pass
 Surface Flatness EN ISO 10545-2	$\pm 0.5\% \leq \pm 2\text{mm}$	Pass	 Stain Resistance EN ISO 10545-14	Min. Class 3	Pass
 Water Absorption EN ISO 10545-3	10% to 20%	Pass	 Fire Rating		Class A1 Non Combustible

Sustainability Credentials

Range Name	Material / Class	EPD	Recycled Content - Tiles	Recycled Content - Packaging
Barbrook	Glazed Ceramic / BIII	Yes	Up to 60%	Up to 100% (Boxes Only)

Note: Please contact our technical helpline, or visit our website for specification and installation advice.
EPD: Environmental Product Declaration. CSV: Colour Shade Variation.

Important Information

During the manufacturing process of ceramic and porcelain tiles, some variation in shade and pattern can occur. Before fixing any tiles; several boxes should be opened and their contents mixed to ensure that size, colour and patterning are acceptable.

The tiles shown in this literature are quality products and conform to BS EN 14411 as shown in the physical properties listed above.

For a comprehensive colour, size, finish and availability overview along with full technical and sustainability information for all products shown, please visit our website - www.johnson-tiles.com

- All sizes listed are metric modular.
- For specific suitability details, please contact our technical advice helpline or use the email address provided.
- Johnson Tiles Limited cannot accept responsibility for any tiles that have already been fixed.
- Johnson Tiles Limited reserves the right to change specification and availability information without prior notice.
- Nothing in these statements does or will affect the statutory rights of the consumer.

All product technical values quoted in this literature are supported by laboratory testing from our own and independent ceramic test houses. Johnson Tiles Limited are British Standard registered. To find out more, please contact our technical advice helpline on +44 (0)1782 524 111 or email: technical@johnson-tiles.com.

WHERE TO FIND US

Head Office

Harewood Street, Tunstall,
Stoke on Trent, Staffordshire,
ST6 5JZ, United Kingdom

Tel: +44 (0)1782 575 575
Email: info@johnson-tiles.com
www.johnson-tiles.com

Material Lab Studio

10 Great Titchfield Street,
London, W1W 8BB,
United Kingdom

Tel: +44 (0)20 7436 8629
Email: info@material-lab.co.uk
www.material-lab.co.uk

Factory Outlet

Tel: +44 (0)1782 524 040
Email: foutlet@johnson-tiles.com
www.outlet.johnson-tiles.com

Customer Services

Tel: +44 (0)1782 524 000
Email: sales@johnson-tiles.com
8:30am - 4:30pm (Monday - Friday)

Order A Sample

Tel: +44 (0)1782 524 043
Email: samples@johnson-tiles.com

Technical Advice Helpline

Tel: +44 (0)1782 524 111
Email: technical@johnson-tiles.com

Launched: September 2024

