

CONTOUR

GLAZED CERAMIC | WALL TILES

COLOUR

STRUCTURE

ABSOLUTE



www.johnson-tiles.com

© 2024 Johnson Tiles Limited

Est. 1901
JOHNSON
TILES

CONTOUR



ELEVEN COLOURS



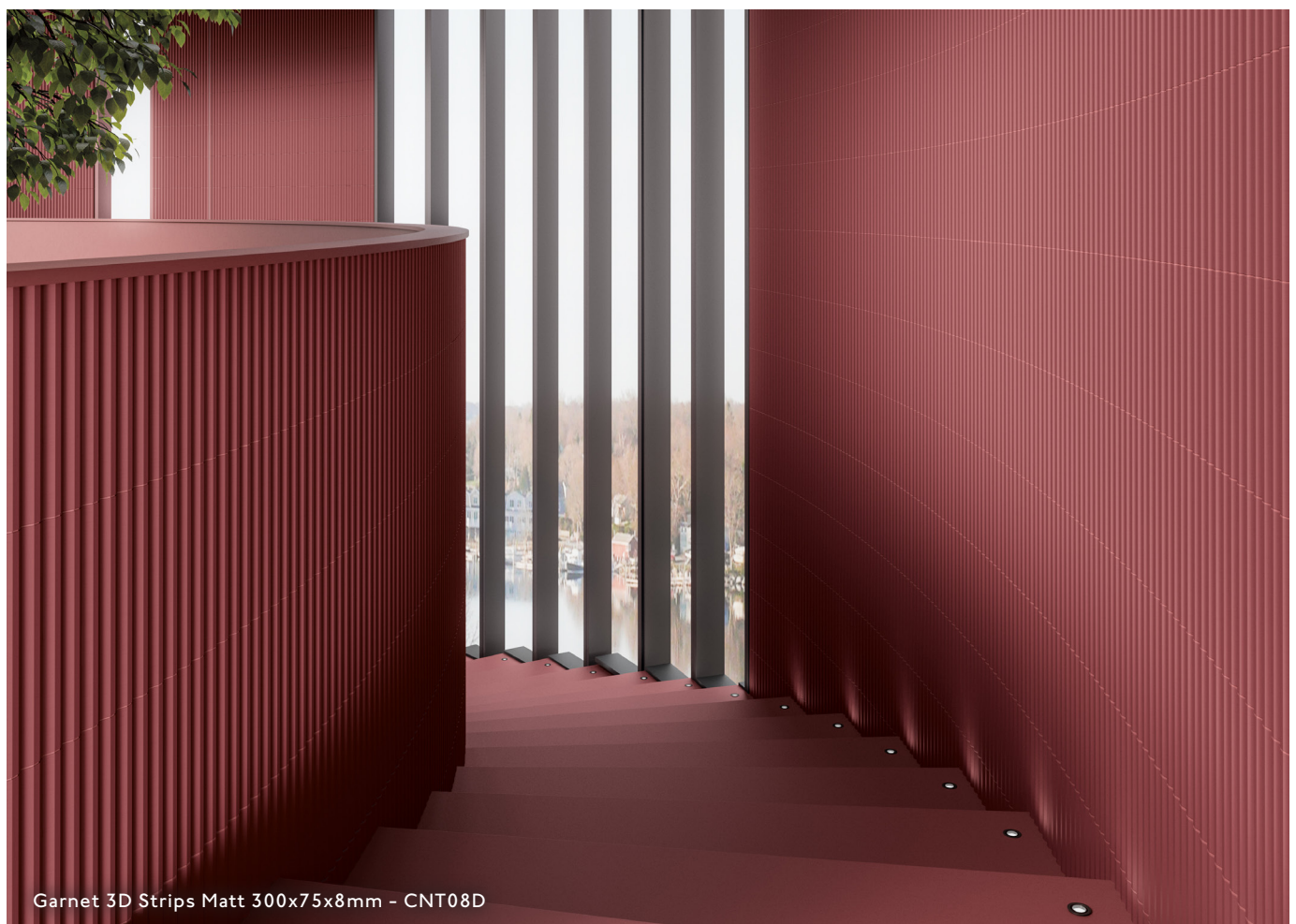
ONE SIZE



TWO FINISHES

Contour features transitional and full strip options which explore three-dimensional structuring. The transitional pieces provide a smooth flow from the field tiles into the full contoured piece to create a sense of movement and fluidity. With vivid colour options including Garnet, Teal, and Black Stone, Contour is sure to make an impact in any interior.





COLOURS AND PRODUCT CODES

VI: Low Shade Variation



WHITE LRV: 90

Product Code: **G** CNT01A + **M** CNT02A



WHITE LRV: 90

3D TRANSITION

Product Code: **G** CNT01T + **M** CNT02T



WHITE LRV: 90

3D STRIPS

Product Code: **G** CNT01D + **M** CNT02D



BEIGE LRV: 62

Product Code: **M** CNT03A



BEIGE LRV: 62

3D TRANSITION

Product Code: **M** CNT03T



BEIGE LRV: 62

3D STRIPS

Product Code: **M** CNT03D



GREY LRV: 29

Product Code: **M** CNT04A



GREY LRV: 29

3D TRANSITION

Product Code: **M** CNT04T



GREY LRV: 29

3D STRIPS

Product Code: **M** CNT04D



TEAL LRV: 35

Product Code: **M** CNT05A



TEAL LRV: 35

3D TRANSITION

Product Code: **M** CNT05T



TEAL LRV: 35

3D STRIPS

Product Code: **M** CNT05D



SKY LRV: 29

Product Code: **M** CNT06A



SKY LRV: 29

3D TRANSITION

Product Code: **M** CNT06T



SKY LRV: 29

3D STRIPS

Product Code: **M** CNT06D



COTTO LRV: 28

Product Code: **M** CNT07A



COTTO LRV: 28

3D TRANSITION

Product Code: **M** CNT07T



COTTO LRV: 28

3D STRIPS

Product Code: **M** CNT07D



GARNET LRV: 11

Product Code: **M** CNT08A



GARNET LRV: 11

3D TRANSITION

Product Code: **M** CNT08T



GARNET LRV: 11

3D STRIPS

Product Code: **M** CNT08D

COLOURS AND PRODUCT CODES

VI: Low Shade Variation



BLACK LRV: 09

Product Code: **M** CNT09A



BLACK LRV: 09

3D TRANSITION

Product Code: **M** CNT09T



BLACK LRV: 09

3D STRIPS

Product Code: **M** CNT09D



WHITE STONE LRV: 73

Product Code: **M** CNT10A



WHITE STONE LRV: 73

3D TRANSITION

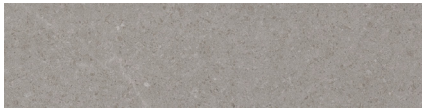
Product Code: **M** CNT10T



WHITE STONE LRV: 73

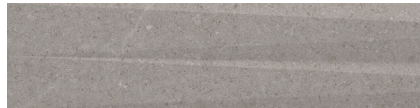
3D STRIPS

Product Code: **M** CNT10D



GREY STONE LRV: 42

Product Code: **M** CNT11A



GREY STONE LRV: 42

3D TRANSITION

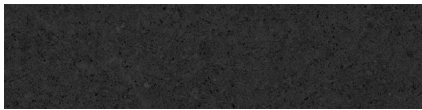
Product Code: **M** CNT11T



GREY STONE LRV: 42

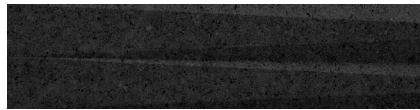
3D STRIPS

Product Code: **M** CNT11D



BLACK STONE LRV: 15

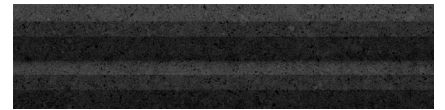
Product Code: **M** CNT12A



BLACK STONE LRV: 15

3D TRANSITION

Product Code: **M** CNT12T



BLACK STONE LRV: 15

3D STRIPS

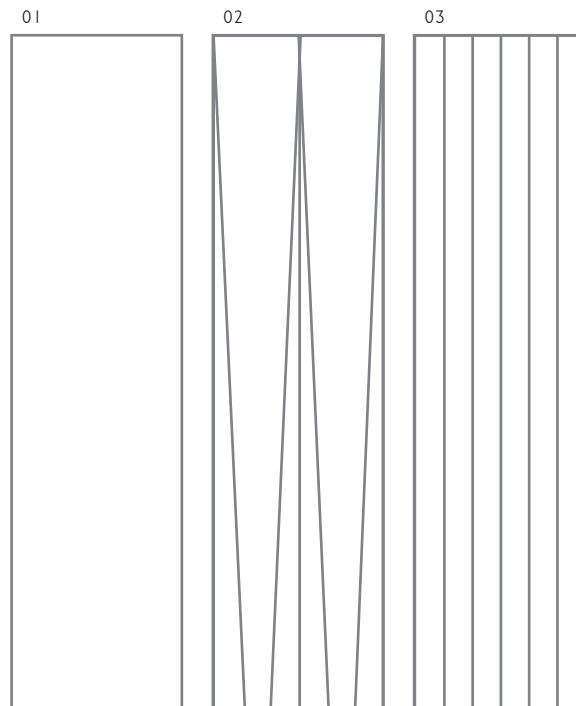
Product Code: **M** CNT12D



White Stone 3D Strips Matt 300x75x8mm - CNT10D

SIZE FORMATS AND AVAILABILITY

Size Options and Packing Information



#	Size Format	Thickness	Finish	Structure	Availability	Class	Pcs / Box	M ² / Box	Kg / Box
01	300x75mm	8mm	Gloss	-	White Only	BIII	23 Tiles	0.52 m ²	7.52 kg
			Matt	-	All Other Colours	BIII	23 Tiles	0.52 m ²	7.52 kg
02	300x75mm	8-15.5mm	Gloss	3D Transition	White Only	BIII	18 Tiles	0.41 m ²	6.91 kg
			Matt	3D Transition	All Other Colours	BIII	18 Tiles	0.41 m ²	6.91 kg
03	300x75mm	15.5mm	Gloss	3D Strips	White Only	BIII	13 Tiles	0.30 m ²	5.51 kg
			Matt	3D Strips	All Other Colours	BIII	13 Tiles	0.30 m ²	5.51 kg

Note: Glazed Ceramic / BIII tiles. For more information please see the suitability advice given in the technical section. All sizes indicated are metric modular. All sizes shown are nominal. For the most up-to-date size, colour and finish availability, please visit our website - www.johnson-tiles.com.





Cotto Matt 300x75x8mm - CNT07A
 White 3D Transition Matt 300x75x8mm - CNT02T
 White 3D Strips Matt 300x75x8mm - CNT02D













TECHNICAL SUPPORT

Specification, Sustainability and Important Information

Product Specification

Range Name	Finish	Wall Suitability	Floor Suitability	Wet Barefoot	Material / Class
Contour	 Gloss	Internal Only	-	-	Glazed Ceramic / BIII
	 Matt	Internal Only	-	-	Glazed Ceramic / BIII

Physical Properties - Glazed Ceramic / BIII

Test and Standard	Requirement	Result	Test and Standard	Requirement	Result
 Length / Width EN ISO 10545-2	$\pm 0.5\% \leq \pm 2\text{mm}$	Pass	 Modulus of Rupture EN ISO 10545-4	Min. 15N / mm ²	Pass
 Thickness EN ISO 10545-2	$\pm 10\% \leq \pm 0.5\text{mm}$	Pass	 Thermal Shock EN ISO 10545-9	Pass	Pass
 Straightness of Side EN ISO 10545-2	$\pm 0.3\% \leq \pm 1.5\text{mm}$	Pass	 Frost Resistance EN ISO 10545-12	-	Not Suitable
 Rectangularity EN ISO 10545-2	$\pm 0.5\% \leq \pm 2\text{mm}$	Pass	 Chemical Resistance EN ISO 10545-13	Min. Class B	Pass
 Surface Flatness EN ISO 10545-2	$\pm 0.5\% \leq \pm 2\text{mm}$	Pass	 Stain Resistance EN ISO 10545-14	Min. Class 3	Pass
 Water Absorption EN ISO 10545-3	10% to 20%	Pass	 Fire Rating		Class A I Non Combustible

Sustainability Credentials

Range Name	Material / Class	EPD	Recycled Content - Tiles	Recycled Content - Packaging
Contour	Glazed Ceramic / BIII	Yes	Up to 80%	-

Note: Please contact our technical helpline, or visit our website for specification and installation advice.
EPD: Environmental Product Declaration. CSV: Colour Shade Variation.

Important Information

During the manufacturing process of ceramic and porcelain tiles, some variation in shade and pattern can occur. Before fixing any tiles; several boxes should be opened and their contents mixed to ensure that size, colour and patterning are acceptable.

The tiles shown in this literature are quality products and conform to BS EN 14411 as shown in the physical properties listed above.

For a comprehensive colour, size, finish and availability overview along with full technical and sustainability information for all products shown, please visit our website - www.johnson-tiles.com

- All sizes listed are metric modular.
- For specific suitability details, please contact our technical advice helpline or use the email address provided.
- Johnson Tiles Limited cannot accept responsibility for any tiles that have already been fixed.
- Johnson Tiles Limited reserves the right to change specification and availability information without prior notice.
- Nothing in these statements does or will affect the statutory rights of the consumer.

All product technical values quoted in this literature are supported by laboratory testing from our own and independent ceramic test houses. Johnson Tiles Limited are British Standard registered. To find out more, please contact our technical advice helpline on +44 (0)1782 524 111 or email: technical@johnson-tiles.com.

WHERE TO FIND US

Head Office

Harewood Street, Tunstall,
Stoke on Trent, Staffordshire,
ST6 5JZ, United Kingdom

Tel: +44 (0)1782 575 575
Email: info@johnson-tiles.com
www.johnson-tiles.com

Material Lab Studio

10 Great Titchfield Street,
London, W1W 8BB,
United Kingdom

Tel: +44 (0)20 7436 8629
Email: info@material-lab.co.uk
www.material-lab.co.uk

Factory Outlet

Tel: +44 (0)1782 524 040
Email: foutlet@johnson-tiles.com
www.outlet.johnson-tiles.com

Customer Services

Tel: +44 (0)1782 524 000
Email: sales@johnson-tiles.com
8:30am - 4:30pm (Monday - Friday)

Order A Sample

Tel: +44 (0)1782 524 043
Email: samples@johnson-tiles.com

Technical Advice Helpline

Tel: +44 (0)1782 524 111
Email: technical@johnson-tiles.com

Updated: October 2024