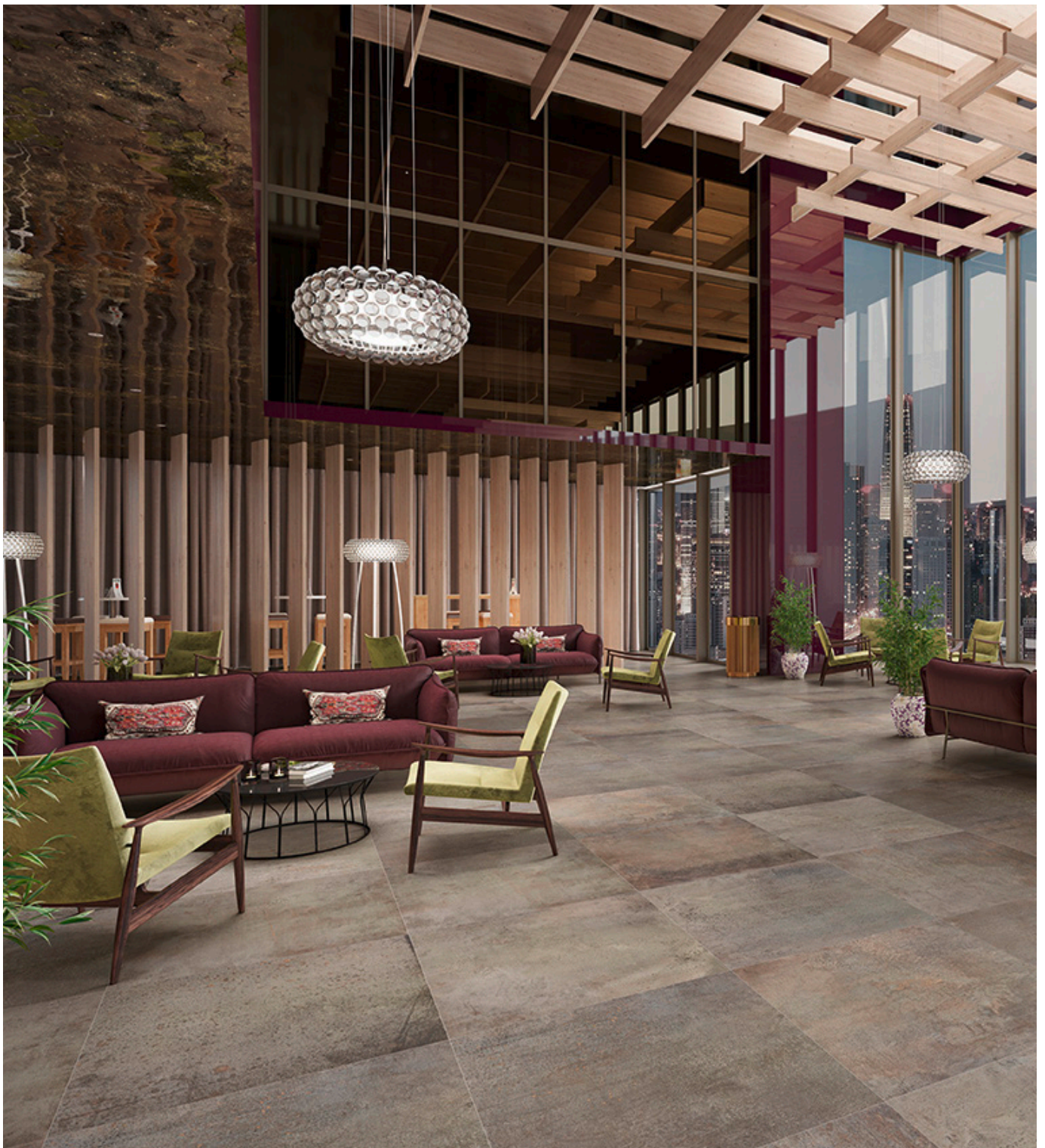


# Oxide

Glazed Porcelain  
Wall and Floor Tiles

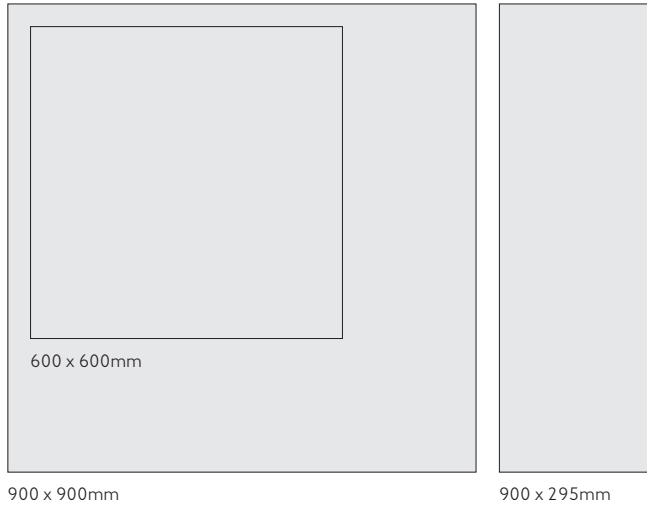


---

 **Oxide** is available in **three sizes**, perfectly designed for seamless installation.

---

**Sizes**



---

**Thickness**


All Sizes = 10.5mm

---

**N.B**

All products in this range are rectified glazed porcelain tiles.

---

 **One finish**, combining both form and function.


Example below is not to scale but has been enlarged to show detail:



---

**Natural**

---

 **Three colours, offering a neutral and contemporary palette.**

For the most up-to-date availability information, please visit our website.



Light Grey

PEI IV

---

### Light Grey

#### Sizes

600 x 600mm  
900 x 295mm  
900 x 900mm

#### Finish

Natural

OXI03N  
OXI03N  
OXI03N

---



Dark Grey

PEI III

---

### Dark Grey

#### Sizes

600 x 600mm  
900 x 295mm  
900 x 900mm

#### Finish

Natural

OXI02N  
OXI02N  
OXI02N

---



Bronze

PEI III

---

### Bronze

#### Sizes

600 x 600mm  
900 x 295mm  
900 x 900mm

#### Finish

Natural

OXI01N  
OXI01N  
OXI01N

---

---

Three stunning colour options across three large format sizes makes **Oxide** the natural first choice for virtually any flooring and walling application.

For more details on suitability, or advice on any technical issues, please contact our technical helpline below.

---

### Specification

#### All Sizes

Wall	Floor	Shade Variation	Material	Finish
Internal and External	Internal	V2	Glazed Porcelain (Bla)	Natural

#### Floor Values - Natural

Colour	Pendulum 4S	R Value	Wet Ramp	Wet Barefoot	Traffic
All Colours	Dry 36+ Wet 36+	-	-	-	Commercial

Due to the manufacturing process of all floor tiles there may be small variations in slip resistance. Given this, we suggest you refer to our website or call our technical helpline for the most up-to-date information.

---

### Colour Notations

Due to the variation in colour and pattern of these tiles, accurate Light Reflectance Values and Colour Notations cannot be accurately calculated. For further information, please contact our technical helpline below.

Front Cover Image: **Oxide Bronze Natural 900 x 900mm**

---

#### Samples

Tel: +44 (0)1782 524043  
Fax: +44 (0)1782 577379  
Email: [samples@johnson-tiles.com](mailto:samples@johnson-tiles.com)

#### Technical Helpline

Tel: +44 (0)1782 524111  
Fax: +44 (0)1782 577379  
Email: [techadvice@johnson-tiles.com](mailto:techadvice@johnson-tiles.com)

