

MARCO

GLAZED CERAMIC & PORCELAIN | WALL & FLOOR TILES

CONCRETE STRUCTURE SCORED SELECT



JOHNSON • TILES 

MADE IN THE UK SINCE 1901

MARCO

Introduce texture into your interiors with a micro square design and complementary field tiles featuring a softly textured surface. Available in Clay, Putty and Cement, the beautiful décor options are designed to highlight a feature wall with the intricate square shapes creating texture and depth. Combine the décor with the coordinating scored tiles available in this range for a complete contemporary look.

Front Cover Image: Cement Rockfall Structure Matt 600x300mm - MARC1A, Cement Rockfall Structure Matt 600x300mm Scored - MACR3E, Cement Micro Dimensions Structure Matt 600x300mm - MARC3D and Cement Grip 600x600mm - MARC3F.





Colours & Product Codes

V2: Low to Moderate Shade Variation



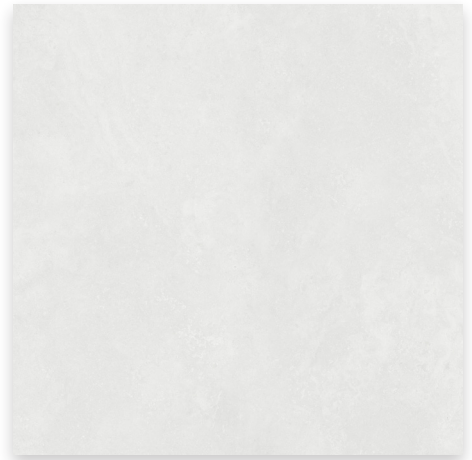
CLAY
ROCKFALL STRUCTURE
[M] MARCIA LRV: 62



CLAY SCORED
ROCKFALL STRUCTURE
[M] MARCIE LRV: 62



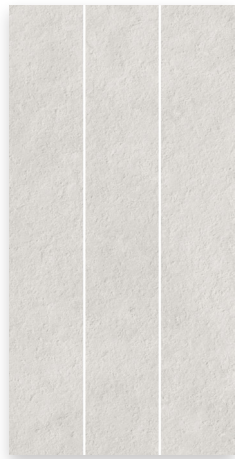
CLAY MICRO
DIMENSIONS STRUCTURE
[M] MARCID LRV: 62



CLAY
[G] MARCIF PEI: IV LRV: 62



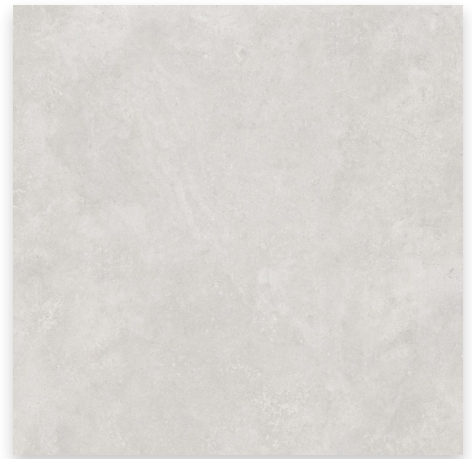
PUTTY
ROCKFALL STRUCTURE
[M] MARC2A LRV: 53



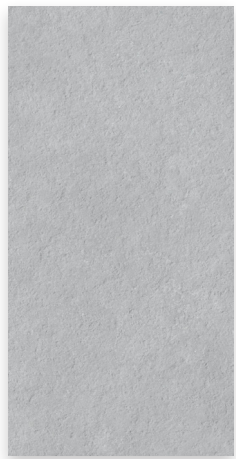
PUTTY SCORED
ROCKFALL STRUCTURE
[M] MARC2E LRV: 53



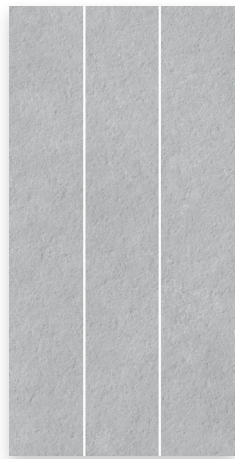
PUTTY MICRO
DIMENSIONS STRUCTURE
[M] MARC2D LRV: 53



PUTTY
[G] MARC2F PEI: III LRV: 53



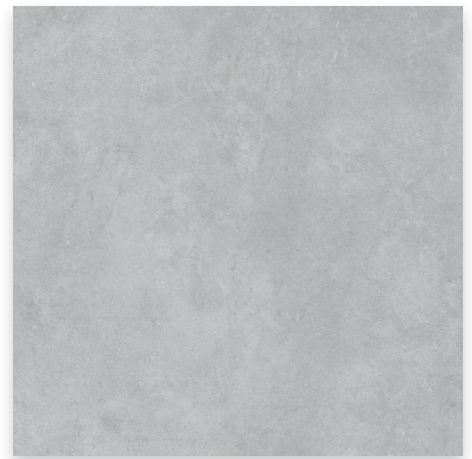
CEMENT
ROCKFALL STRUCTURE
[M] MARC3A LRV: 38



CEMENT SCORED
ROCKFALL STRUCTURE
[M] MARC3E LRV: 38



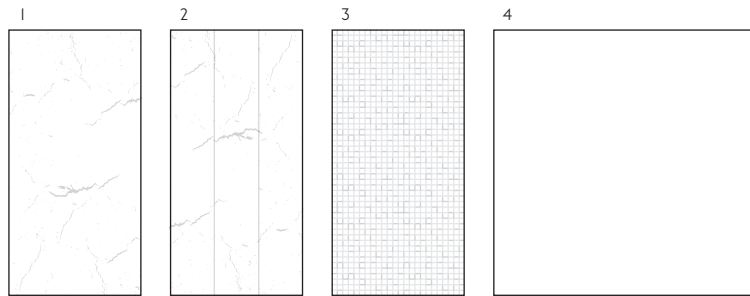
CEMENT MICRO
DIMENSIONS STRUCTURE
[M] MARC3D LRV: 38



CEMENT
[G] MARC3F PEI: III LRV: 38



Sizes, Finishes & Availability



#	Size	Finish	Colour Availability	Thickness	Pieces/Box	Coverage/Box	Weight/Box
1	600x300mm Rockfall Structure	M Matt	All Colours Shown	8mm	6 Tiles	1.08 m ²	16.00 kg
2	600x300mm Scored Rockfall Structure	M Matt	All Colours Shown	8mm	6 Tiles	1.08 m ²	16.00 kg
3	600x300mm Micro Dimensions Structure	M Matt	All Colours Shown	8mm	6 Tiles	1.08 m ²	16.00 kg
4	600x600mm	G Grip	All Colours Shown	10mm	3 Tiles	1.44 m ²	29.00 kg

Note: All sizes indicated are metric modular. All dimensions are in millimetres. All sizes shown are nominal. For the most up-to-date availability information, please visit our website. All LRV results are from Johnson Tiles' internal test reports and are to be used for guidance only. LRV: Light Reflectance Value.



Clay Rockfall Structure Matt 600x300mm - MARCIA
 Clay Rockfall Structure Matt 600x300mm Scored - MARCIE
 Clay Micro Dimensions Structure Matt 600x300mm - MARCID
 Clay Grip 600x600mm - MARCIF



Technical Data

Specification

Range	Size / Finish	Wall Suitability	Floor Suitability	Wet Barefoot	CSV	Material
Marco	600x300mm	Internal Only	-	-	V2	Glazed Ceramic [BIII]
	600x600mm	Internal & External	Internal & External	Yes	V2	Glazed Porcelain [BIa]

Floor Values

Finish	Colour	PTV (4S)	PTV (TRL)	R Value	Wet Ramp	PEI	Traffic
Grip	Clay	Dry 36+ Wet 36+	Wet 36+	-	-	IV	Commercial
	Putty & Cement	Dry 36+ Wet 36+	Wet 36+	-	-	III	Light Commercial

Note: Due to the manufacturing process of all floor tiles there may be small variations in slip resistance. Given this, please refer to our website for the most up-to-date information. The slip resistance properties of a surface can only be maintained with the implementation of an effective regular cleaning and maintenance regime. The frequency of cleaning should be determined by the property manager based on the potential level of surface contaminants. The need for an additional regular cleaning and maintenance regime is further heightened when tiles are used for external floor and wet barefoot applications. CSV: Colour Shade Variation. PTV (4S): Pendulum Test Value - Slider 96. PTV (TRL): Pendulum Test Value - Slider 55. R Value (DIN 51130). Wet Ramp (DIN 51097). PEI: Porcelain Enamel Institute.

Physical Properties - Glazed Ceramic [BIII]

Test / Standard	Requirement	Test Result	Test / Standard	Requirement	Test Result
Length / Width EN ISO 10545 - 2	$\pm 0.5\% \leq \pm 2\text{mm}$	$\pm 0.25\%$	Modulus of Rupture EN ISO 10545 - 4	Min. 15N / mm ²	$\geq 25\text{N} / \text{mm}^2$
Thickness EN ISO 10545 - 2	$\pm 10\% \leq \pm 0.5\text{mm}$	$\pm 2.5\%$	Thermal Shock EN ISO 10545 - 9	Pass	Pass
Straightness of Side EN ISO 10545 - 2	$\pm 0.3\% \leq \pm 1.5\text{mm}$	$\pm 0.15\%$	Frost Resistance EN ISO 10545 - 12		Not Suitable
Rectangularity EN ISO 10545 - 2	$\pm 0.5\% \leq \pm 2\text{mm}$	$\pm 0.4\%$	Chemical Resistance EN ISO 10545 - 13	Min. Class B	Class A-B (Better)
Surface Flatness EN ISO 10545 - 2	$\pm 0.5\% \leq \pm 2\text{mm}$	$\pm 0.2\%$	Stain Resistance EN ISO 10545 - 14	Min. Class 3	Class 3 (Better)
Water Absorption EN ISO 10545 - 3	10% to 20%	15% to 17%	Fire Rating	-	Class A I _{FL} Non Combustible
Weight / M ²	14.82 kg 8mm thick				

Note: All products are classed as BIII - Glazed Ceramic. All products conform to BS EN 14411.

Physical Properties - Glazed Porcelain [BIa]

Test / Standard	Requirement	Test Result	Test / Standard	Requirement	Test Result
Length / Width EN ISO 10545 - 2	$\pm 0.6\% \leq \pm 2\text{mm}$	$\pm 0.6\%$	Modulus of Rupture EN ISO 10545 - 4	Min. 35N / mm ²	$\geq 35\text{N} / \text{mm}^2$
Thickness EN ISO 10545 - 2	$\pm 5\% \leq \pm 0.5\text{mm}$	$\pm 5\%$	Thermal Shock EN ISO 10545 - 9	Pass	Pass
Straightness of Side EN ISO 10545 - 2	$\pm 0.5\% \leq \pm 1.5\text{mm}$	$\pm 0.5\%$	Frost Resistance EN ISO 10545 - 12	Resistant	Resistant
Rectangularity EN ISO 10545 - 2	$\pm 0.5\% \leq \pm 2\text{mm}$	$\pm 0.6\%$	Chemical Resistance EN ISO 10545 - 13	Min. Class B	Pass
Surface Flatness EN ISO 10545 - 2	$\pm 0.5\% \leq \pm 2\text{mm}$	$\pm 0.5\%$	Stain Resistance EN ISO 10545 - 14	Min. Class 3	Min. Class 3
Water Absorption EN ISO 10545 - 3	$\leq 0.5\%$	$\leq 0.6\%$	Fire Rating	-	Class A I _{FL} Non Combustible
Weight / M ²	23.17 kg 10mm thick				

Note: All products are classed as BIa - Glazed Porcelain. All products conform to BS EN 14411.

Sustainability Information

Range	Material	EPD	Recycled Content of the Tiles	Recycled Content of the Packaging	Recyclable Content of the Packaging
Marco	Glazed Ceramic [BIII]	Yes	Up to 20%	Up to 100%	Up to 100%
	Glazed Porcelain [Bla]	Yes	Up to 50%	Up to 100% (Boxes)	Up to 100% (Boxes)

Note: EPD: Environmental Product Declaration for the products shown in this overview can be on the Marco pages on our website.

Important Information

During the manufacturing process of ceramic, vitrified and porcelain tiles, some variation in shade and pattern can occur. Before fixing any tiles; several boxes should be opened and their contents mixed to ensure that size, colour, shade and patterning are acceptable. The tiles shown are quality products and conform to the physical properties listed below.

- All sizes shown are metric modular.
- For specific suitability and fit-for-purpose details please contact our technical helpline.
- Johnson Tiles cannot accept responsibility for any tiles that have been fixed.
- Every effort has been made to ensure the accuracy of the information given.
- Johnson Tiles reserves the right to change specifications and availability without prior notice.
- Nothing in these statements does or will affect the statutory rights of the consumer.

© Johnson Tiles, Johnson, Absolute and Material Lab are registered trademarks and together with Kerastar and product names are the trademarks of H&R Johnson Tiles Limited and licensed to Norcros Group (Holdings) Limited trading as Johnson Tiles. © 2021 Johnson Tiles. All rights reserved.



Putty Rockfall Structure Matt 600x300mm - MARC2A
 Putty Rockfall Structure Matt 600x300mm Scored - MARC2E
 Putty Micro Dimensions Structure Matt 600x300mm - MARC2D

For more information about Marco or any
of our other product ranges simply visit
www.johnson-tiles.com |      

Where To Find Us

Johnson Tiles

Harewood Street,
Tunstall,
Stoke on Trent,
Staffordshire,
ST6 5JZ

Tel: +44 (0)1782 575 575
Fax: +44 (0)1782 577 377
Email: info@johnson-tiles.com

Samples Enquiries

Tel: +44 (0)1782 524 043
Fax: +44 (0)1782 577 379
Email: samples@johnson-tiles.com

Technical Helpline

Tel: +44 (0)1782 524 111
Fax: +44 (0)1782 577 379
Email: techadvice@johnson-tiles.com

Updated: August 2023

JOHNSON • TILES 
MADE IN THE UK SINCE 1901