

Marks and Spencer London

The anchor M&S store at London Westfield – one of the largest shopping centres in Europe features over 9,500m² of retail space. Unglazed porcelain floor tiles from Johnson Tiles were used across all three sales floors, providing M&S with the high-quality finish yet low maintenance durability needed to cope with the volumes of shoppers.

Products

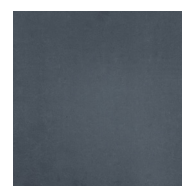
Floor tiles used on this project...



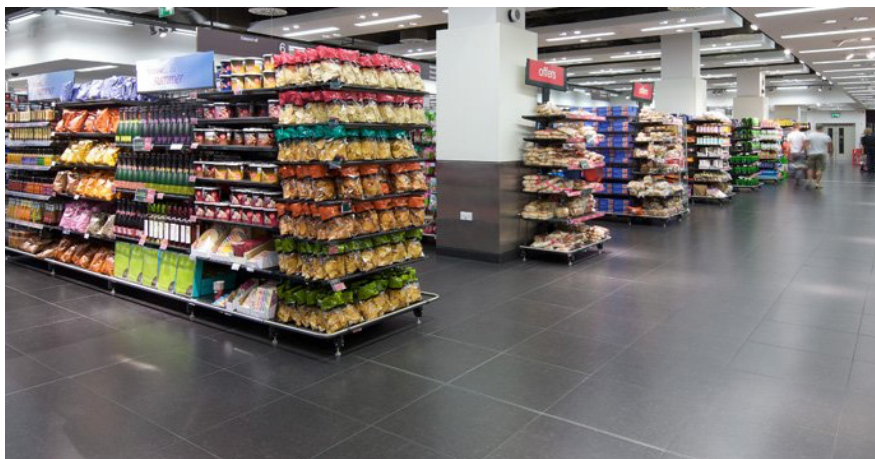
Mode
MOD01N Cotton
600 x 600mm



Mode
MOD03N Straw
600 x 600mm



Mode
MOD07N Nimbus
600 x 600mm



To see more information about these tiles or any of our other tiles from our portfolio, simply visit www.johnson-tiles.com.