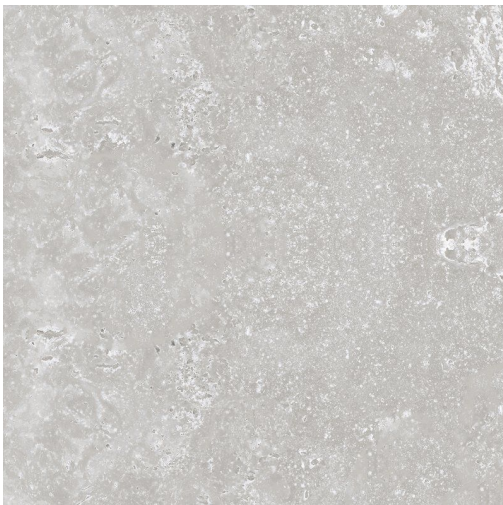


# ZANZIBAR PRODUCT DATA SHEET



## Available Sizes

1200x600x9mm  
610x610x10.5mm  
610x300x9mm  
900x900x10.5mm  
900x450x11mm

## Samples Service

Tel: +44 (0)1782 524 043  
Fax: +44 (0)1782 577 379  
Email: [samples@johnson-tiles.com](mailto:samples@johnson-tiles.com)

## Technical Helpline

Tel: +44 (0)1782 524 111  
Fax: +44 (0)1782 577 379  
Email: [techadvice@johnson-tiles.com](mailto:techadvice@johnson-tiles.com)

[www.johnson-tiles.com](http://www.johnson-tiles.com)

Recycled Content Up to 40%

Range	Zanzibar
Category	Stone, Floor Tiles, PTV 36+ Tiles
Collection	Absolute Collection
Short Code	ZAZ04G
Colour	Steel
Finish	Grip
Wall Suitability	Internal & External
Floor Suitability	Internal & External
Wet Barefoot	Yes
Material	Glazed Porcelain
Classification	Bla
Light Reflectance Value	38.00
CSV	V3
PTV (96)	Wet 36+ Dry 36+
PTV (55)	Wet 36+
R Value	11
Wet Ramp	-
PEI	III
Traffic	Light Commercial

## Physical Properties

Test / Standard	Requirement	Test Result
<b>Length/Width</b> EN ISO 10545-2	$\pm 0.6\% \leq \pm 2\text{mm}$	Pass
<b>Thickness</b> EN ISO 10545-2	$\pm 5\% \leq \pm 0.5\text{mm}$	Pass
<b>Straightness of Sides</b> EN ISO 10545-2	$\pm 0.5\% \leq \pm 1.5\text{mm}$	Pass
<b>Rectangularity</b> EN ISO 10545-2	$\pm 0.5\% \leq \pm 2\text{mm}$	Pass
<b>Surface Flatness</b> EN ISO 10545-2	$\pm 0.5\% \leq \pm 2\text{mm}$	Pass
<b>Water Absorption</b> EN ISO 10545-3	$\leq 0.5\%$	$\leq 0.5\%$
<b>Modulus of Rupture</b> EN ISO 10545-4	$\geq 35\text{N/mm}^2$	35N - 45N / mm <sup>2</sup>
<b>Thermal Shock</b> EN ISO 10545-9	Pass	Pass
<b>Frost Resistance</b> EN ISO 10545-12	Resistant	Resistant
<b>Chemical Resistance</b> EN ISO 10545-13	Min Class B	Class A
<b>Stain Resistance</b> EN ISO 10545-14	Min Class 3	Class 5
<b>UV Colour Resistance</b>		Unaffected by light
<b>Fire Rating</b> Not Applicable	N/A	Class A1 FL Non Combustible
<b>Weight/m<sup>2</sup></b> Thickness: 9mm Thickness: 10.5mm Thickness: 11mm Thickness: 20mm		20.49kg 24.7kg 23.63kg 47.36kg

Tile colours shown of the tile product on this data sheet are as accurate as the limitations of the printing process will allow. Due to the manufacturing process of all floor tiles there may be small variations in slip resistance. The slip resistance values provided are accurate at the time of testing and represent the standard production value. Please note, inadequate cleaning and maintenance will lead to a significant reduction in the slip resistance of any tiles. The pendulum test results are displayed in line with The Health & Safety Executive guidelines whereby 0 - 24 represents a high slip potential, 25 - 35 signifies a moderate slip potential and 36+ represents a low slip potential. All figures are accurate at the time of this data sheets creation (01/05/2025). Johnson Tiles Limited, Harewood Street, Tunstall, Stoke-on-Trent. ST6 5JZ. Registered in England No. 15600432. © 2025 Johnson Tiles. All rights reserved.

Est. 1901  
**JOHNSON**  
TILES