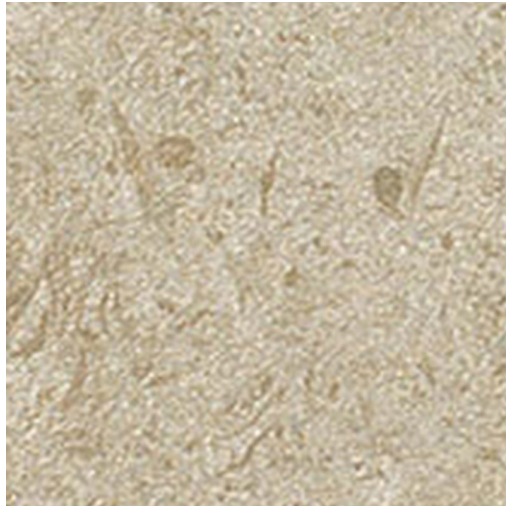


MINERALS PRODUCT DATA SHEET



Available Sizes

1200x1200x9mm
 600x50x9mm
 900x900x9mm
 600x100x9mm
 600x300x9mm
 2700x1200x6mm
 600x600x9mm
 1200x600x9mm
 900x450x9mm

Samples Service

Tel: +44 (0)1782 524 043
 Fax: +44 (0)1782 577 379
 Email: samples@johnson-tiles.com

Technical Helpline

Tel: +44 (0)1782 524 111
 Fax: +44 (0)1782 577 379
 Email: techadvice@johnson-tiles.com

www.johnson-tiles.com

Recycled Content **Up to 30%**

Range	Minerals
Category	Stone
Collection	Absolute Collection
Short Code	MIN03N
Colour	Limestone
Finish	Natural
Wall Suitability	Internal & External
Floor Suitability	Internal Only
Wet Barefoot	-
Material	Porcelain
Classification	Bla
Light Reflectance Value	41.00
CSV	V2
PTV (4S)	Wet 25-35 Dry 36+
PTV (TRL)	-
R Value	9
Wet Ramp	A
PEI	-
Traffic	Commercial

Physical Properties

Test / Standard	Requirement	Test Result
Length/Width EN ISO 10545-2	$\pm 0.6\% \leq \pm 2\text{mm}$	Pass
Thickness EN ISO 10545-2	$\pm 5\% \leq \pm 0.5\text{mm}$	Pass
Straightness of Sides EN ISO 10545-2	$\pm 0.5\% \leq \pm 1.5\text{mm}$	Pass
Rectangularity EN ISO 10545-2	$\pm 0.5\% \leq \pm 2\text{mm}$	Pass
Surface Flatness EN ISO 10545-2	$\pm 0.5\% \leq \pm 2\text{mm}$	Pass
Water Absorption EN ISO 10545-3	$\leq 0.5\%$	$\leq 0.5\%$
Modulus of Rupture EN ISO 10545-4	$\geq 35\text{N/mm}^2$	$\geq 35\text{N/mm}^2$
Thermal Shock EN ISO 10545-9	Pass	Pass
Frost Resistance EN ISO 10545-12	Resistant	Resistant
Chemical Resistance EN ISO 10545-13	Min Class B	Pass
Stain Resistance EN ISO 10545-14	Min Class 3	Class 5
Fire Rating Not Applicable	N/A	Class A I FL Non Combustible
Weight/m² Thickness: 11mm		25.5kg

Tile colours shown of the tile product on this data sheet are as accurate as the limitations of the printing process will allow. Due to the manufacturing process of all floor tiles there may be small variations in slip resistance. The slip resistance values provided are accurate at the time of testing and represent the standard production value. Please note, inadequate cleaning and maintenance will lead to a significant reduction in the slip resistance of any tiles. The pendulum test results are displayed in line with The Health & Safety Executive guidelines whereby 0 - 24 represents a high slip potential, 25 - 35 signifies a moderate slip potential and 36+ represents a low slip potential. All figures are accurate at the time of this data sheets creation (21/03/2021). Johnson Tiles is a division of Norcros Group (Holdings) Limited, Ladyfield House, Station Road, Wilmstow, Cheshire, SK9 1BU. Registered in England No. 566694. Johnson Tiles, Johnson, Absolute and Material Lab are registered trademarks and together with Kerastar and product names are the trademarks of H&R Johnson Tiles Limited and licensed to Norcros Group (Holdings) Limited trading as Johnson Tiles. © 2021 Johnson Tiles. All rights reserved.

JOHNSON · TILES
 MADE IN THE UK SINCE 1901