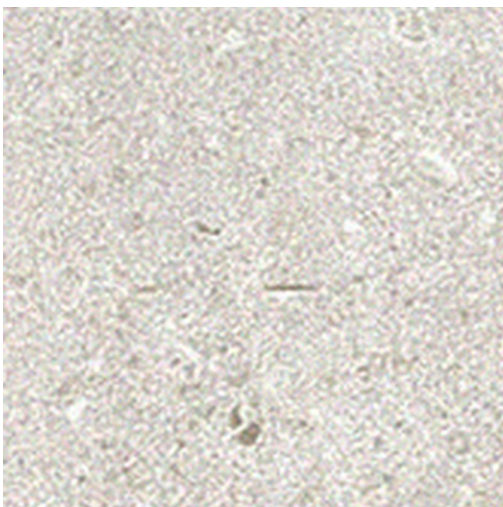


MINERALS PRODUCT DATA SHEET



Available Sizes

600x50x9mm
600x300x9mm
1200x600x9mm
900x450x9mm
600x100x9mm
600x600x9mm
900x900x9mm
1200x1200x9mm

Samples Service

Tel: +44 (0)1782 524 043
Fax: +44 (0)1782 577 379
Email: samples@johnson-tiles.com

Technical Helpline

Tel: +44 (0)1782 524 111
Fax: +44 (0)1782 577 379
Email: techadvice@johnson-tiles.com

www.johnson-tiles.com

Recycled Content Up to 30%

Range	Minerals
Category	Stone, Floor Tiles, PTV 36+ Tiles
Collection	Absolute Collection
Short Code	MIN02G
Colour	Dolomite
Finish	Grip
Wall Suitability	Internal & External
Floor Suitability	Internal & External
Wet Barefoot	Yes
Material	Porcelain
Classification	Bla
Light Reflectance Value	53.00
CSV	V2
PTV (96)	Wet 36+ Dry 36+
PTV (55)	Wet 36+
R Value	11
Wet Ramp	C
PEI	-
Traffic	Commercial

Physical Properties

Test / Standard	Requirement	Test Result
Length/Width EN ISO 10545-2	$\pm 0.6\% \leq \pm 2\text{mm}$	Pass
Thickness EN ISO 10545-2	$\pm 5\% \leq \pm 0.5\text{mm}$	Pass
Straightness of Sides EN ISO 10545-2	$\pm 0.5\% \leq \pm 1.5\text{mm}$	Pass
Rectangularity EN ISO 10545-2	$\pm 0.5\% \leq \pm 2\text{mm}$	Pass
Surface Flatness EN ISO 10545-2	$\pm 0.5\% \leq \pm 2\text{mm}$	Pass
Water Absorption EN ISO 10545-3	$\leq 0.5\%$	$\leq 0.5\%$
Modulus of Rupture EN ISO 10545-4	$\geq 35\text{N/mm}^2$	$\geq 35\text{N/mm}^2$
Thermal Shock EN ISO 10545-9	Pass	Pass
Frost Resistance EN ISO 10545-12	Resistant	Resistant
Chemical Resistance EN ISO 10545-13	Min Class B	Pass
Stain Resistance EN ISO 10545-14	Min Class 3	Class 5
Fire Rating Not Applicable	N/A	Class A1 FL Non Combustible
Weight/m² Thickness: 6mm Thickness: 9mm Thickness: 20mm		14.09kg 21.19kg 45.85kg

Tile colours shown of the tile product on this data sheet are as accurate as the limitations of the printing process will allow. Due to the manufacturing process of all floor tiles there may be small variations in slip resistance. The slip resistance values provided are accurate at the time of testing and represent the standard production value. Please note, inadequate cleaning and maintenance will lead to a significant reduction in the slip resistance of any tiles. The pendulum test results are displayed in line with The Health & Safety Executive guidelines whereby 0 - 24 represents a high slip potential, 25 - 35 signifies a moderate slip potential and 36+ represents a low slip potential. All figures are accurate at the time of this data sheets creation (30/04/2025). Johnson Tiles Limited, Harewood Street, Tunstall, Stoke-on-Trent. ST6 5JZ. Registered in England No. 15600432. © 2025 Johnson Tiles. All rights reserved.

Est. 1901
JOHNSON
TILES