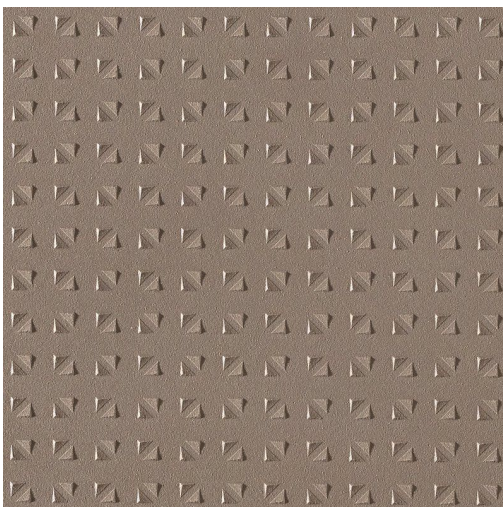


KERASTAR PRODUCT DATA SHEET



Available Sizes

200x200x8.3mm

Samples Service

Tel: +44 (0)1782 524 043

Fax: +44 (0)1782 577 379

Email: samples@johnson-tiles.com

Technical Helpline

Tel: +44 (0)1782 524 111

Fax: +44 (0)1782 577 379

Email: techadvice@johnson-tiles.com

www.johnson-tiles.com

Recycled Content **Up to 36%**

Range	Kerastar
Category	Colour, Floor Tiles, PTV
	36+ Tiles
Collection	Intro Collection
Short Code	KET53 I
Colour	Mocha
Finish	Textured - Triface Structure
Wall Suitability	Internal & External
Floor Suitability	Internal & External
Wet Barefoot	Yes
Material	Un-glazed Porcelain
Classification	Bla
Light Reflectance Value	18.00
CSV	VI
PTV (96)	Wet 36+ Dry 36+
PTV (55)	Wet 36+
R Value	I2
Wet Ramp	C
PEI	-
Traffic	Commercial

Physical Properties

Test / Standard	Requirement	Test Result
Length/Width EN ISO 10545-2	$\pm 0.6\% \leq \pm 2\text{mm}$	$\pm 0.3\%$
Thickness EN ISO 10545-2	$\pm 5\% \leq \pm 0.5\text{mm}$	$\pm 3\%$
Straightness of Sides EN ISO 10545-2	$\pm 0.5\% \leq \pm 1.5\text{mm}$	$\pm 0.3\%$
Rectangularity EN ISO 10545-2	$\pm 0.5\% \leq \pm 2\text{mm}$	$\pm 0.3\%$
Surface Flatness EN ISO 10545-2	$\pm 0.5\% \leq \pm 2\text{mm}$	$\pm 0.3\%$
Water Absorption EN ISO 10545-3	$\leq 0.5\%$	$\leq 0.1\%$
Modulus of Rupture EN ISO 10545-4	$\geq 35\text{N/mm}^2$	$\geq 45\text{N/mm}^2$
Thermal Shock EN ISO 10545-9	Pass	Pass
Frost Resistance EN ISO 10545-12	Resistant	Resistant
Chemical Resistance EN ISO 10545-13	No Visible Effect	Pass
Stain Resistance EN ISO 10545-14		$\geq \text{Class 2}$
Fire Rating Not Applicable	N/A	Class A1 FL Non Combustible
Weight/m²		
	Thickness: 7.6mm	16.78kg
	Thickness: 8.3mm	18.56kg
	Thickness: 8.5mm	19.12kg
	Thickness: 9.2mm	21.67kg
	Thickness: 9.8mm	21.12kg
	Thickness: 10.5mm	24.37kg
	Thickness: 14mm	31.39kg

Tile colours shown of the tile product on this data sheet are as accurate as the limitations of the printing process will allow. Due to the manufacturing process of all floor tiles there may be small variations in slip resistance. The slip resistance values provided are accurate at the time of testing and represent the standard production value. Please note, inadequate cleaning and maintenance will lead to a significant reduction in the slip resistance of any tiles. The pendulum test results are displayed in line with The Health & Safety Executive guidelines whereby 0 - 24 represents a high slip potential, 25 - 35 signifies a moderate slip potential and 36+ represents a low slip potential. All figures are accurate at the time of this data sheets creation (09/05/2025). Johnson Tiles Limited, Harewood Street, Tunstall, Stoke-on-Trent. ST6 5JZ. Registered in England No. 15600432. © 2025 Johnson Tiles. All rights reserved.

Est. 1901
**JOHNSON
TILES**