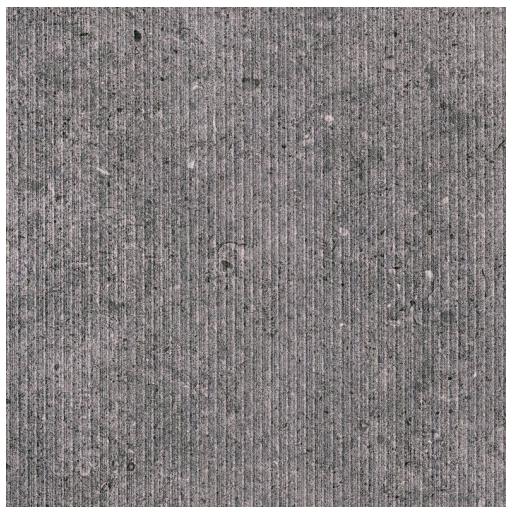


FOSSILITE PRODUCT DATA SHEET



Available Sizes

600x300x9.2mm

Samples Service

Tel: +44 (0)1782 524 043

Fax: +44 (0)1782 577 379

Email: samples@johnson-tiles.com

Technical Helpline

Tel: +44 (0)1782 524 111

Fax: +44 (0)1782 577 379

Email: techadvice@johnson-tiles.com

www.johnson-tiles.com

Recycled Content Up to 40%

Range	Fossilite
Category	Stone, Structure, Floor Tiles
Collection	Select Collection
Short Code	FOS04L
Colour	Black
Finish	Natural - Linear Structure
Wall Suitability	Internal & External
Floor Suitability	Internal Only
Wet Barefoot	-
Material	Glazed Porcelain
Classification	Bla
Light Reflectance Value	21.00
CSV	V2
PTV (96)	Wet 25-35 Dry 36+
PTV (55)	-
R Value	10
Wet Ramp	B
PEI	IV
Traffic	Commercial

Physical Properties

Test / Standard	Requirement	Test Result
Length/Width EN ISO 10545-2	$\pm 0.6\% \leq \pm 2\text{mm}$	Pass
Thickness EN ISO 10545-2	$\pm 5\% \leq \pm 0.5\text{mm}$	Pass
Straightness of Sides EN ISO 10545-2	$\pm 0.5\% \leq \pm 1.5\text{mm}$	Pass
Rectangularity EN ISO 10545-2	$\pm 0.5\% \leq \pm 2\text{mm}$	Pass
Surface Flatness EN ISO 10545-2	$\pm 0.5\% \leq \pm 2\text{mm}$	Pass
Water Absorption EN ISO 10545-3	$\leq 0.5\%$	$\leq 0.5\%$
Modulus of Rupture EN ISO 10545-4	$\geq 35\text{N/mm}^2$	Pass
Thermal Shock EN ISO 10545-9	Pass	Pass
Frost Resistance EN ISO 10545-12	Resistant	Resistant
Chemical Resistance EN ISO 10545-13	Min Class B	Pass
Stain Resistance EN ISO 10545-14	Min Class 3	Pass
UV Colour Resistance		Unaffected by light
Fire Rating Not Applicable	N/A	Class A1 FL Non Combustible
Weight/m² Thickness: 9.2mm Thickness: 10.5mm		21.1 kg 25.1 kg

Tile colours shown of the tile product on this data sheet are as accurate as the limitations of the printing process will allow. Due to the manufacturing process of all floor tiles there may be small variations in slip resistance. The slip resistance values provided are accurate at the time of testing and represent the standard production value. Please note, inadequate cleaning and maintenance will lead to a significant reduction in the slip resistance of any tiles. The pendulum test results are displayed in line with The Health & Safety Executive guidelines whereby 0 - 24 represents a high slip potential, 25 - 35 signifies a moderate slip potential and 36+ represents a low slip potential. All figures are accurate at the time of this data sheets creation (23/05/2025). Johnson Tiles Limited, Harewood Street, Tunstall, Stoke-on-Trent. ST6 5JZ. Registered in England No. 15600432. © 2025 Johnson Tiles. All rights reserved.

Est. 1901
**JOHNSON
TILES**