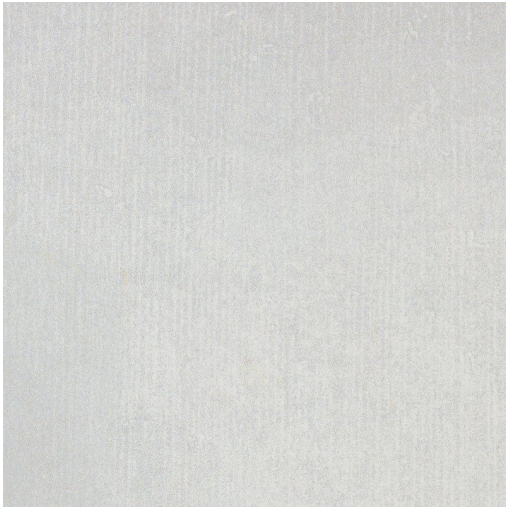


CONCRETO PRODUCT DATA SHEET



Available Sizes

608x608x9.5mm
330x330x7.2mm
605x305x7.8mm
455x455x8mm
900x450x10mm

Samples Service

Tel: +44 (0)1782 524 043
Fax: +44 (0)1782 577 379
Email: samples@johnson-tiles.com

Technical Helpline

Tel: +44 (0)1782 524 111
Fax: +44 (0)1782 577 379
Email: techadvice@johnson-tiles.com

www.johnson-tiles.com

 Recycled Content **Up to 10%**

Range	Concreto
Category	Concrete, Floor Tiles, PTV 36+ Tiles
Collection	Absolute Collection
Short Code	CCR01N
Colour	Bone
Finish	Natural
Wall Suitability	Internal & External
Floor Suitability	Internal Only
Wet Barefoot	-
Material	Glazed Porcelain
Classification	Bla
Light Reflectance Value	55.00
CSV	V4
PTV (4S)	Wet 36+ Dry 36+
PTV (TRL)	-
R Value	10
Wet Ramp	A
PEI	IV
Traffic	Commercial

Physical Properties

Test / Standard	Requirement	Test Result
 Length/Width EN ISO 10545-2	$\pm 0.6\% \leq \pm 2\text{mm}$	Pass
 Thickness EN ISO 10545-2	$\pm 5\% \leq \pm 0.5\text{mm}$	Pass
 Straightness of Sides EN ISO 10545-2	$\pm 0.5\% \leq \pm 1.5\text{mm}$	Pass
 Rectangularity EN ISO 10545-2	$\pm 0.5\% \leq \pm 2\text{mm}$	Pass
 Surface Flatness EN ISO 10545-2	$\pm 0.5\% \leq \pm 2\text{mm}$	Pass
 Water Absorption EN ISO 10545-3	$\leq 0.5\%$	Pass
 Modulus of Rupture EN ISO 10545-4	$\geq 35\text{N/mm}^2$	Pass
 Thermal Shock EN ISO 10545-9	Pass	Pass
 Frost Resistance EN ISO 10545-12	Resistant	Resistant
 Chemical Resistance EN ISO 10545-13	Min Class B	Class A
 Stain Resistance EN ISO 10545-14	Min Class 3	Class 5
 UV Colour Resistance		Unaffected by light
 Fire Rating Not Applicable	N/A	Class A1 FL Non Combustible
 Weight/m²		
	Thickness: 7.2mm	15.78kg
	Thickness: 7.8mm	16.9kg
	Thickness: 8mm	18.39kg
	Thickness: 9.5mm	21.03kg
	Thickness: 10mm	22.24kg

Tile colours shown of the tile product on this data sheet are as accurate as the limitations of the printing process will allow. Due to the manufacturing process of all floor tiles there may be small variations in slip resistance. The slip resistance values provided are accurate at the time of testing and represent the standard production value. Please note, inadequate cleaning and maintenance will lead to a significant reduction in the slip resistance of any tiles. The pendulum test results are displayed in line with The Health & Safety Executive guidelines whereby 0 - 24 represents a high slip potential, 25 - 35 signifies a moderate slip potential and 36+ represents a low slip potential. All figures are accurate at the time of this data sheets creation (21/03/2021). Johnson Tiles is a division of Norcros Group (Holdings) Limited, Ladyfield House, Station Road, Wilmstow, Cheshire, SK9 1BU. Registered in England No. 566694. Johnson Tiles, Johnson, Absolute and Material Lab are registered trademarks and together with Kerastar and product names are the trademarks of H&R Johnson Tiles Limited and licensed to Norcros Group (Holdings) Limited trading as Johnson Tiles. © 2021 Johnson Tiles. All rights reserved.

JOHNSON · TILES 
MADE IN THE UK SINCE 1901