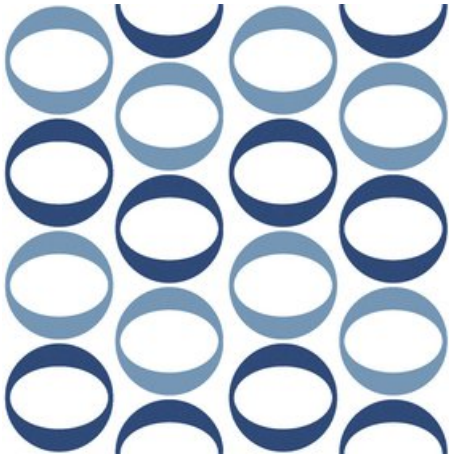



Absolute Collection – Soho Blue Circles Décor Matt



Available Sizes

Tile

140 x 140 x 8mm

Descriptive Colour	Blue Circles Décor
Finish	Matt
Range	Soho
Shortcode	SOH04D
Suitabilities	 Internal

Material	Glazed Vitrified
Classification	B2a

Physical properties

Test	Standard	Requirement	Typical test value
Length/Width	EN ISO 10545-2	$\pm 0.5\% \leq \pm 2\text{mm}$	$\pm 0.25\%$
Thickness	EN ISO 10545-2	$\pm 10\% \leq \pm 0.5\text{mm}$	$\pm 2.5\%$
Straightness of Sides	EN ISO 10545-2	$\pm 0.3\% \leq \pm 1.5\text{mm}$	$\pm 0.15\%$
Rectangularity	EN ISO 10545-2	$\pm 0.5\% \leq \pm 2\text{mm}$	$\pm 0.4\%$
Surface Flatness	EN ISO 10545-2	$\pm 0.5\% \leq \pm 2\text{mm}$	$\pm 0.2\%$
Water Absorption	EN ISO 10545-3	10% to 20%	15% to 17%
Modulus of Rupture	EN ISO 10545-4	Ave 15N/mm ²	25N/mm ²
Frost Resistance	Not Applicable	N/A	Not suitable
Chemical Resistance	EN ISO 10545-13	Min Class B	Class A-B (better)
Stain Resistance	EN ISO 10545-14	Min Class 3	Class 3 (better)
Fire Rating			Class A1 Non Combustible
Weight/m ²			15.2kg
Thickness 9mm			
UV Colour Resistance			Unaffected by light

Samples

Tel: +44 (0) 1782 524043

Fax: +44 (0) 1782 577379

Email: samples@johnson-tiles.com

Technical helpline

Tel: +44 (0) 1782 524111

Fax: +44 (0) 1782 577379

Email: techadvice@johnson-tiles.comwww.johnson-tiles.com

The colours shown on the tile products in this data sheet are as accurate as the limitations of the printing process will allow. Due to the manufacturing process of all floor tiles there may be small variations in slip resistance. The slip resistance values provided are correct at the time of testing and represent the standard production value. Please note: Inadequate cleaning and maintenance will lead to a significant reduction in the slip resistance of any tiles. The Pendulum test results have been displayed in line with the Health and Safety Executive guidelines whereby 0-24 represents a high slip potential, 25-35 signifies a moderate slip potential and 36+ represents a low slip potential. All figures accurate at time of data sheet creation (04/12/2020). Johnson Tiles is a division of Norcros Group (Holdings) Limited, Ladyfield House, Station Road, Wilmslow, Cheshire, SK9 1BU. Registered in England number 566694. Johnson Tiles, Johnson, Absolute and Material Lab are registered trademarks and together with Kerastar and the product names are the trademarks of H&R Johnson Tiles Limited and licensed to Norcros Group (Holdings) Limited, trading as Johnson Tiles. ©2013 Johnson Tiles. All rights reserved.