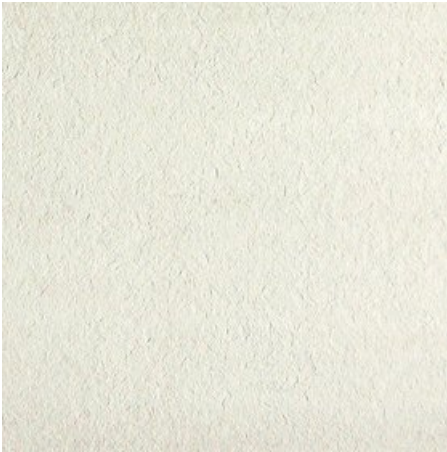


## Absolute Collection - Centaurus Bone Bush Hammered



<b>Descriptive Colour</b>	Bone
<b>Finish</b>	Bush Hammered
<b>Range</b>	Centaurus
<b>Shortcode</b>	CEN03B
<b>Suitabilities</b>	<input type="checkbox"/> Internal & External <input type="checkbox"/> Internal
<b>Material</b>	Porcelain
<b>Classification</b>	B I a
<b>Light Reflectance Value</b>	62.00
<b>NCS</b>	1002-Y
<b>Colour Shade Variation (CSV)</b>	V2
<b>Pendulum Dry 4S</b>	36+
<b>Pendulum Wet 4S</b>	25 - 35
<b>Rz Value (Surface Microroughness)</b>	17.2
<b>R Value (DIN51130)</b>	R10
<b>Traffic</b>	Commercial

## Available Sizes

## Tile

600 x 300 x 10mm  
600 x 300 x 10mm Scored

## Physical properties

Test	Standard	Requirement	Typical test value
Length/Width	EN ISO 10545-2	$\pm 0.6\% \leq \pm 2\text{mm}$	$\pm 0.1\%$
Thickness	EN ISO 10545-2	$\pm 5\% \leq \pm 0.5\text{mm}$	$\pm 5\%$
Straightness of Sides	EN ISO 10545-2	$\pm 0.5\% \leq \pm 1.5\text{mm}$	$\pm 0.1\%$
Rectangularity	EN ISO 10545-2	$\pm 0.5\% \leq \pm 2\text{mm}$	$\pm 0.2\%$
Surface Flatness	EN ISO 10545-2	$\pm 0.5\% \leq \pm 2\text{mm}$	$\pm 0.25\%$
Water Absorption	EN ISO 10545-3	$\leq 0.5\%$	$< 0.1\%$
Modulus of Rupture	EN ISO 10545-4	$\geq 35\text{N/mm}^2$	$53\text{N/mm}^2$
Abrasion Resistance	EN ISO 10545-6	$\leq 175\text{mm}^3$	$130\text{mm}^3$
Thermal Shock	EN ISO 10545-9	Pass	Pass
Frost Resistance	EN ISO 10545-12	Resistant	Resistant
Chemical Resistance	EN ISO 10545-13	Min Class B	Resistant
Stain Resistance	EN ISO 10545-14	Min Class 3	Class 5
Fire Rating			Class A1 FL Non Combustible
Weight/m <sup>2</sup>			
Thickness: 10mm			22.6kg 23.5kg
Thickness: 11mm			

## Samples

Tel: +44 (0) 1782 524043  
Fax: +44 (0) 1782 577379  
Email: samples@johnson-tiles.com

## Technical helpline

Tel: +44 (0) 1782 524111  
Fax: +44 (0) 1782 577379  
Email: techadvice@johnson-tiles.com

[www.johnson-tiles.com](http://www.johnson-tiles.com)

The colours shown on the tile products in this data sheet are as accurate as the limitations of the printing process will allow. Due to the manufacturing process of all floor tiles there may be small variations in slip resistance. The slip resistance values provided are correct at the time of testing and represent the standard production value. Please note: Inadequate cleaning and maintenance will lead to a significant reduction in the slip resistance of any tiles. The Pendulum test results have been displayed in line with the Health and Safety Executive guidelines whereby 0-24 represents a high slip potential, 25-35 signifies a moderate slip potential and 36+ represents a low slip potential. All figures accurate at time of data sheet creation (04/12/2020). Johnson Tiles is a division of Norcross Group (Holdings) Limited, Ladyfield House, Station Road, Wilmslow, Cheshire, SK9 1BU. Registered in England number 566694. Johnson Tiles, Johnson, Absolute and Material Lab are registered trademarks and together with Kerastar and the product names are the trademarks of H&R Johnson Tiles Limited and licensed to Norcross Group (Holdings) Limited, trading as Johnson Tiles. ©2013 Johnson Tiles. All rights reserved.