

TONES

GLAZED CERAMIC | WALL TILES

PLAIN COLOUR TILES



JOHNSON • TILES 

MADE IN THE UK SINCE 1901

TONES

Tones features an organic pallet including natural White for clean lines and deep Mocha for statement instalments. With the Wave décor mirroring the rippling effect of water, and a Forest option bringing a touch of the natural, Tones explores texture and depth, with a Nano and Polygon finish also available in select colours.

Front Cover Image: Latte Satin 400x150mm - TNS3A & Latte Wave Structure Satin 400x150mm - TNS3W

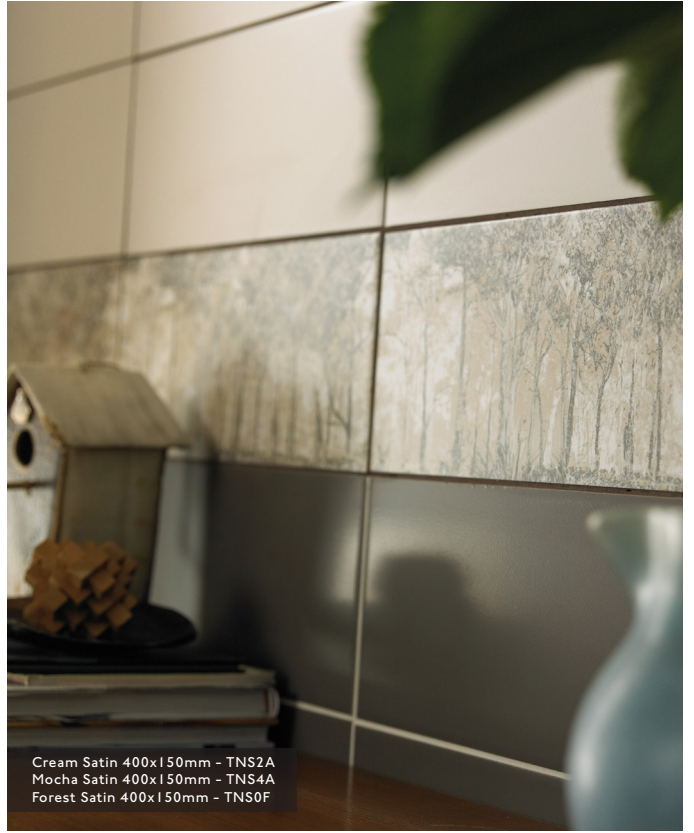




Roomset Photography



Steam Satin 400x150mm - TNS5A
Steam Linear Mix Satin 400x150mm - TNS5L



Cream Satin 400x150mm - TNS2A
Mocha Satin 400x150mm - TNS4A
Forest Satin 400x150mm - TNS0F

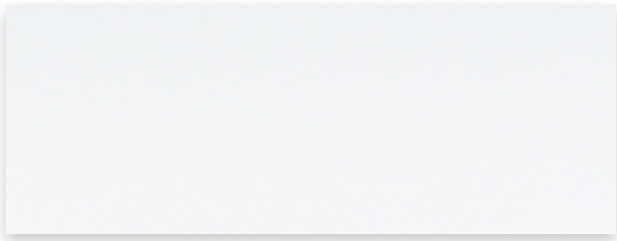


Steam Satin 400x150mm - TNS5A
Steam Wave Structure Satin 400x150mm - TNS5W



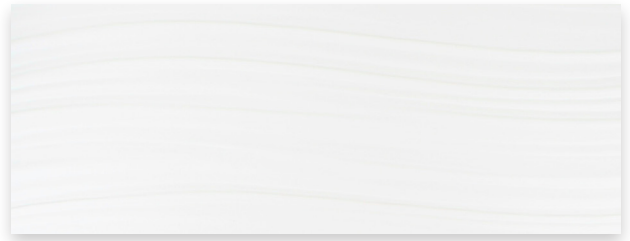
Colours & Product Codes

VI: Low Shade Variation



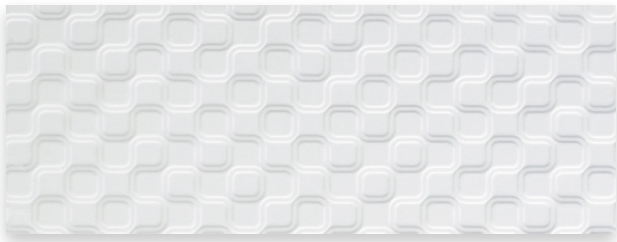
WHITE

 TNS1A  LRV: 73



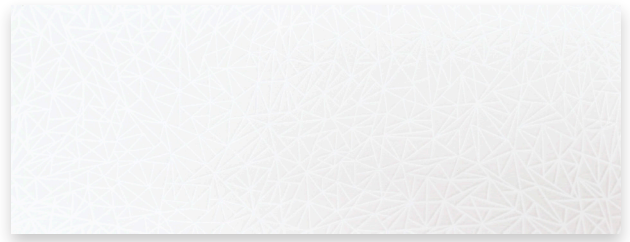
WHITE WAVE STRUCTURE

 TNS1W  LRV: 73



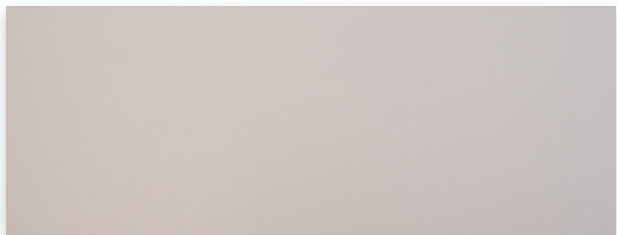
WHITE NANO STRUCTURE

 TNS1N  LRV: 73



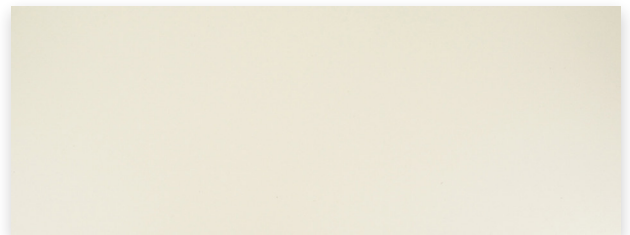
WHITE POLYGON DÉCOR

 TNS1P  LRV: 73



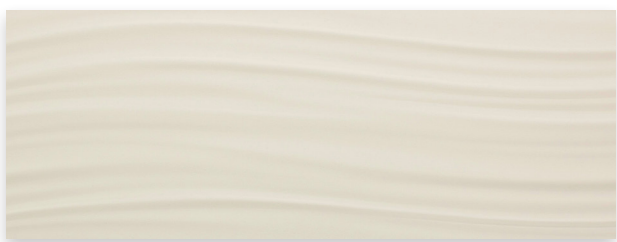
IVORY

 TNS8A  LRV: 69



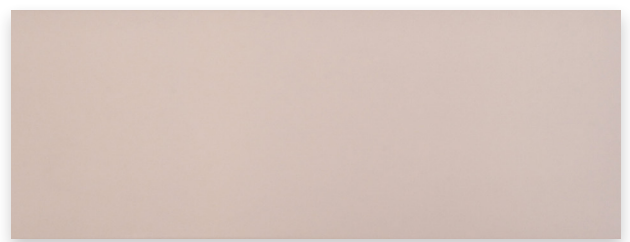
CREAM

 TNS2A  LRV: 70



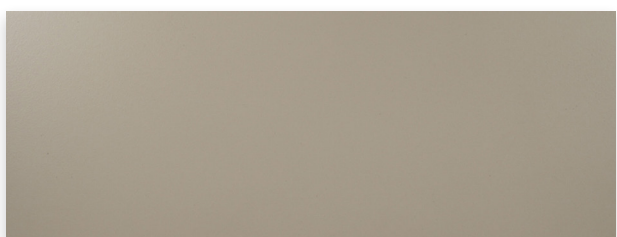
CREAM WAVE STRUCTURE

 TNS2W  LRV: 70



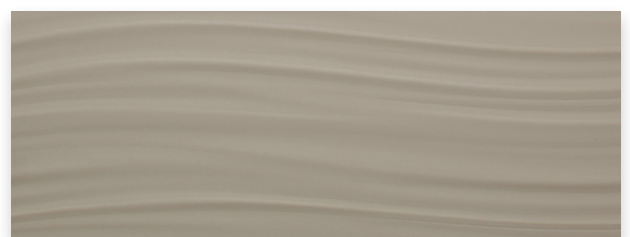
TAUPE

 TNS9A  LRV: 38



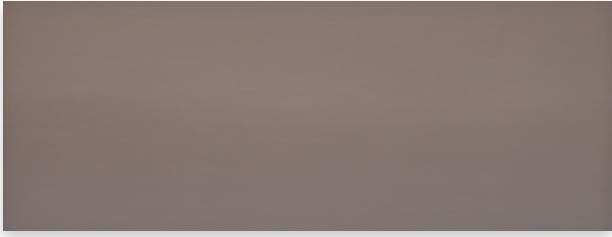
LATTE

 TNS3A  LRV: 40



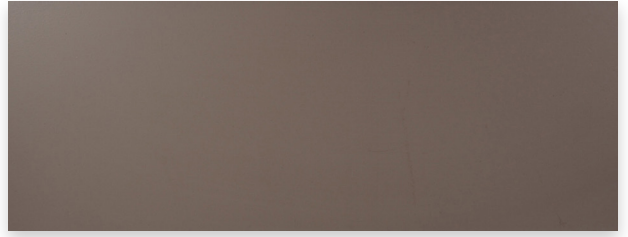
LATTE WAVE STRUCTURE

 TNS3W  LRV: 40



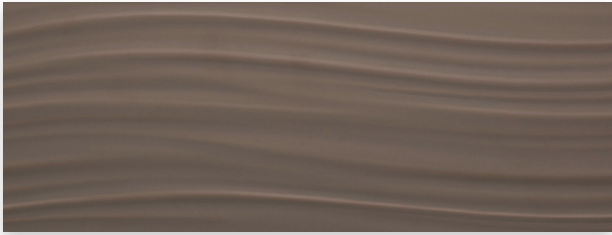
PEBBLE

Ⓢ TNS10A LRV: 21



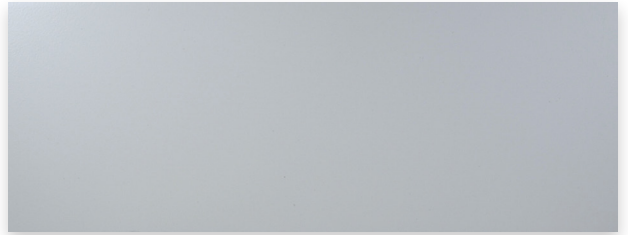
MOCHA

Ⓢ TNS4A LRV: 18



MOCHA WAVE STRUCTURE

Ⓢ TNS4W LRV: 18



STEAM

Ⓢ TNS5A LRV: 50



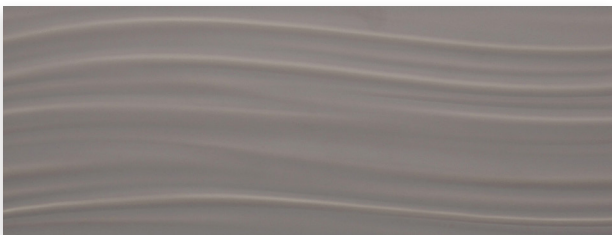
STEAM WAVE STRUCTURE

Ⓢ TNS5W LRV: 50



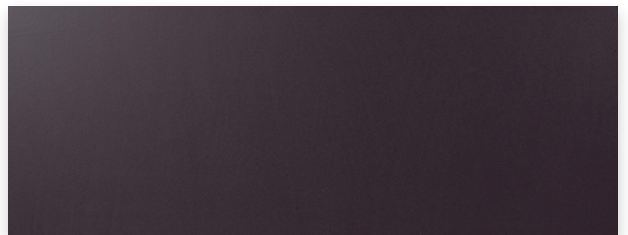
SMOKE

Ⓢ TNS6A LRV: 24



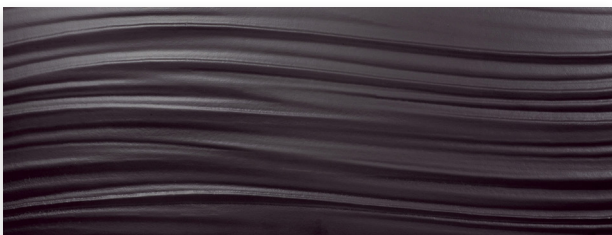
SMOKE WAVE STRUCTURE

Ⓢ TNS6W LRV: 24



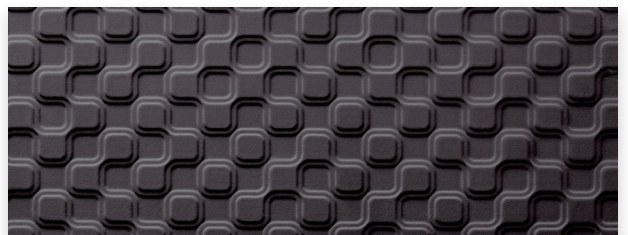
CHARCOAL

Ⓢ TNS7A LRV: 6



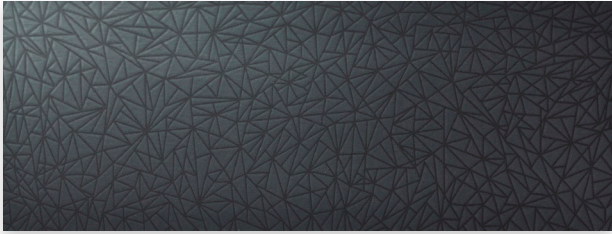
CHARCOAL WAVE STRUCTURE

Ⓢ TNS7W LRV: 6



CHARCOAL NANO STRUCTURE

Ⓢ TNS7N LRV: 6



CHARCOAL POLYGON DÉCOR

Ⓢ TNS7P LRV: 6



CREAM LINEAR MIX

Ⓢ TNS2L



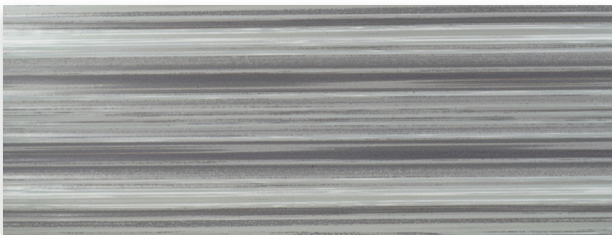
MOCHA LINEAR MIX

Ⓢ TNS4L



STEAM LINEAR MIX

Ⓢ TNS5L



SMOKE LINEAR MIX

Ⓢ TNS6L



FOREST

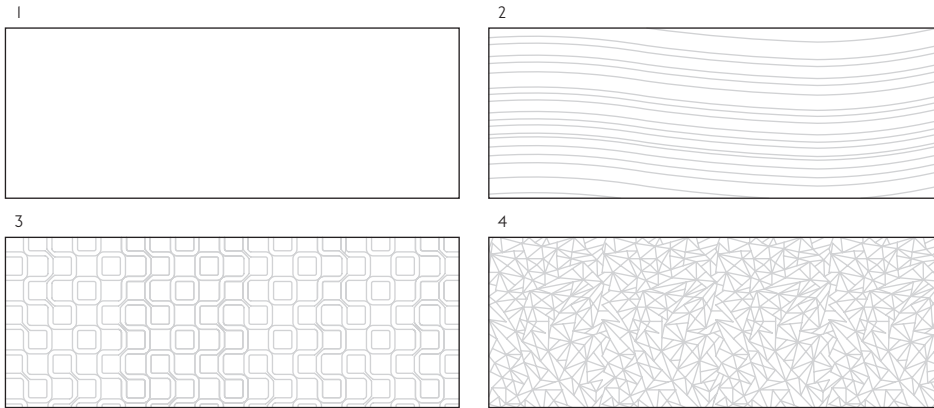
Ⓢ TNS0F



Cream Satin 400x150mm - TNS2A
Cream Wave Structure Satin 400x150mm - TNS2W



Sizes, Finishes & Availability



#	Size	Finish	Colour Availability	Thickness	Pieces/Box	Coverage/Box	Weight/Box
1	400x150mm	[S] Satin	All Colours Shown	10mm	17 Tiles	1.02 m ²	17.00 kg
		[S] Satin	Forest	10mm	8 Tiles	0.48 m ²	8.20 kg
2	400x150mm Wave Structure	[S] Satin	All Colours Shown	10mm	17 Tiles	1.02 m ²	17.00 kg
3	400x150mm Nano Structure	[S] Satin	White & Charcoal	10mm	17 Tiles	1.02 m ²	17.00 kg
4	400x150mm Polygon Décor	[S] Satin	White & Charcoal	10mm	17 Tiles	1.02 m ²	17.00 kg

Note: All sizes indicated are metric modular. All dimensions are in millimetres. All sizes shown are nominal. For the most up-to-date availability information, please visit our website. All LRV results are from Johnson Tiles' internal test reports and are to be used for guidance only. LRV: Light Reflectance Value.



White Satin 400x150mm - TNS1A
White Wave Structure Satin 400x150mm - TNS1W



Technical Data

Specification

Range	Size	Wall Suitability	Floor Suitability	Wet Barefoot	CSV	Material
Tones	All Sizes Shown	Internal Only	-	-	VI	Glazed Ceramic [BIII]

Physical Properties

Test/Standard	Requirement	Test Result	Test/Standard	Requirement	Test Result
Length / Width EN ISO 10545 - 2	$\pm 0.5\% \leq \pm 2\text{mm}$	$\leq \pm 0.25\%$	Modulus of Rupture EN ISO 10545 - 4	Min. 15N / mm ²	$\geq 25\text{N} / \text{mm}^2$
Thickness EN ISO 10545 - 2	$\pm 1.0\% \leq \pm 0.5\text{mm}$	$\pm 2.5\%$	Thermal Shock EN ISO 10545 - 9	Pass	Pass
Straightness of Side EN ISO 10545 - 2	$\pm 0.3\% \leq \pm 1.5\text{mm}$	$\pm 0.15\%$	Frost Resistance EN ISO 10545 - 12	-	Not Suitable
Rectangularity EN ISO 10545 - 2	$\pm 0.5\% \leq \pm 2\text{mm}$	$\pm 0.4\%$	Chemical Resistance EN ISO 10545 - 13	Min. Class B	Class A - B
Surface Flatness EN ISO 10545 - 2	$\pm 0.5\% \leq \pm 2\text{mm}$	$\pm 0.3\%$	Stain Resistance EN ISO 10545 - 14	Min. Class 3	Class 3
Water Absorption EN ISO 10545 - 3	10% to 20%	15% to 17%	Fire Rating	-	Class A1 Non Combustible
Weight / M ²	16.67 kg 10mm thick				

Note: All products are classed as BIII - Glazed Ceramic. All products conform to BS EN 14411.

Sustainability Information

Range	Material	Recycled Content of the Tiles	Recycled Content of the Packaging	Recyclable Content of the Packaging	EPD
Tones	Glazed Ceramic [BIII]	Up to 20%	Up to 100%	Up to 100%	Yes

Note: EPD: Environmental Product Declaration for the products shown in this overview can be on the Tones pages on our website.

Important Information

During the manufacturing process of ceramic, vitrified and porcelain tiles, some variation in shade and pattern can occur. Before fixing any tiles; several boxes should be opened and their contents mixed to ensure that size, colour, shade and patterning are acceptable. The tiles shown are quality products and conform to the physical properties listed below.

- All sizes shown are metric modular.
- For specific suitability and fit-for-purpose details please contact our technical helpline.
- Johnson Tiles cannot accept responsibility for any tiles that have been fixed.
- Every effort has been made to ensure the accuracy of the information given.
- Johnson Tiles reserves the right to change specifications and availability without prior notice.
- Nothing in these statements does or will affect the statutory rights of the consumer.

© Johnson Tiles, Johnson, Absolute and Material Lab are registered trademarks and together with Kerastar and product names are the trademarks of H&R Johnson Tiles Limited and licensed to Norcros Group (Holdings) Limited trading as Johnson Tiles. © 2021 Johnson Tiles. All rights reserved.



For more information about Tones or any
of our other product ranges simply visit
www.johnson-tiles.com |      

Where To Find Us

Johnson Tiles

Harewood Street,
Tunstall,
Stoke on Trent,
Staffordshire,
ST6 5JZ

Tel: +44 (0)1782 575 575
Fax: +44 (0)1782 577 377
Email: info@johnson-tiles.com

Samples Enquiries

Tel: +44 (0)1782 524 043
Fax: +44 (0)1782 577 379
Email: samples@johnson-tiles.com

Technical Helpline

Tel: +44 (0)1782 524 111
Fax: +44 (0)1782 577 379
Email: techadvice@johnson-tiles.com

Launched: August 2012 Updated: February 2023

JOHNSON • TILES 
MADE IN THE UK SINCE 1901