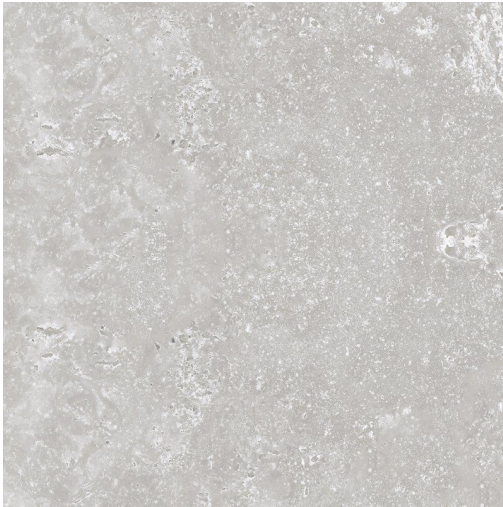


ZANZIBAR PRODUCT DATA SHEET



Available Sizes

900x450x11mm
 610x300x9mm
 1200x600x9mm
 900x900x10.5mm
 610x610x10.5mm

Samples Service

Tel: +44 (0)1782 524 043
 Fax: +44 (0)1782 577 379
 Email: samples@johnson-tiles.com

Technical Helpline

Tel: +44 (0)1782 524 111
 Fax: +44 (0)1782 577 379
 Email: techadvice@johnson-tiles.com

www.johnson-tiles.com

Recycled Content **Up to 40%**

Range	Zanzibar
Category	Stone, Floor Tiles, PTV 36+ Tiles
Collection	Absolute Collection
Short Code	ZAZ04G
Colour	Steel
Finish	Grip
Wall Suitability	Internal & External
Floor Suitability	Internal & External
Wet Barefoot	Yes
Material	Glazed Porcelain
Classification	Bla
Light Reflectance Value	38.00
CSV	V3
PTV (4S)	Wet 36+ Dry 36+
PTV (TRL)	Wet 36+
R Value	11
Wet Ramp	-
PEI	III
Traffic	Light Commercial

Physical Properties

Test / Standard	Requirement	Test Result
Length/Width EN ISO 10545-2	$\pm 0.6\% \leq \pm 2\text{mm}$	Pass
Thickness EN ISO 10545-2	$\pm 5\% \leq \pm 0.5\text{mm}$	Pass
Straightness of Sides EN ISO 10545-2	$\pm 0.5\% \leq \pm 1.5\text{mm}$	Pass
Rectangularity EN ISO 10545-2	$\pm 0.5\% \leq \pm 2\text{mm}$	Pass
Surface Flatness EN ISO 10545-2	$\pm 0.5\% \leq \pm 2\text{mm}$	Pass
Water Absorption EN ISO 10545-3	$\leq 0.5\%$	$\leq 0.5\%$
Modulus of Rupture EN ISO 10545-4	$\geq 35\text{N/mm}^2$	35N - 45N / mm²
Thermal Shock EN ISO 10545-9	Pass	Pass
Frost Resistance EN ISO 10545-12	Resistant	Resistant
Chemical Resistance EN ISO 10545-13	Min Class B	Class A
Stain Resistance EN ISO 10545-14	Min Class 3	Class 5
UV Colour Resistance		Unaffected by light
Fire Rating Not Applicable	N/A	Class A1 FL Non Combustible
Weight/m²		
	Thickness: 9mm	20.49kg
	Thickness: 10.5mm	24.7kg
	Thickness: 11mm	23.63kg
	Thickness: 20mm	47.36kg

Tile colours shown of the tile product on this data sheet are as accurate as the limitations of the printing process will allow. Due to the manufacturing process of all floor tiles there may be small variations in slip resistance. The slip resistance values provided are accurate at the time of testing and represent the standard production value. Please note, inadequate cleaning and maintenance will lead to a significant reduction in the slip resistance of any tiles. The pendulum test results are displayed in line with The Health & Safety Executive guidelines whereby 0 - 24 represents a high slip potential, 25 - 35 signifies a moderate slip potential and 36+ represents a low slip potential. All figures are accurate at the time of this data sheets creation (20/05/2024). Johnson Tiles Limited, Harewood Street, Tunstall, Stoke-on-Trent. ST6 5JZ. Registered in England No. 15600432. © 2024 Johnson Tiles. All rights reserved.